

FIBER & NEEDLE CRAFTS

2025 COMPETITION GUIDE

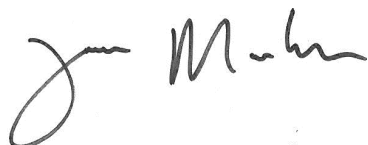
It's your moment to shine!
Enter today.

For more than 170 years the California State Fair has been a constant showcase of the talents and achievements of the people of California. Entering into the California State Fair's 2025 Competitive Exhibits Program allows you the opportunity to showcase your abilities, and revel in your accomplishments!

The California State Fair's friendly competitions are designed to acknowledge the best of the Golden State. Our Competitive Programs inspire talented Californians, as well as highlight the latest advances in technology, agriculture, and industry.

More than 750,000 visitors are expected at the State Fair this summer. Your work is an integral part of the State's celebration, and we look forward to seeing your talents on display during the annual State Fair from July 11-27. We encourage you to enter today and begin making lasting memories for yourself, and for the hundreds of thousands of State Fair patrons!

Sincerely,



Tom Martinez

Chief Executive Officer

GOVERNOR

Gavin Newsom

CALIFORNIA STATE FAIR

BOARD OF DIRECTORS

Chair, Kim Craig, Sacramento

Vice Chair, Nick Hardeman, Sacramento

Arturo Barajas, Sacramento

Heather Bernikoff, Catheys Valley

Rina V. Dimare, Clarksburg

Willie Pelote, Sacramento

Che Salinas, Sacramento

EX-OFFICIO MEMBERS

Senator Angelique Ashby Assembly

Senator Melissa Hurtado

Assembly Member Maggy Krell

Assembly Member Esmeralda Soria

CHIEF EXECUTIVE OFFICER

Tom Martinez

PROGRAMS MANAGER

Jaime Ramirez



OFFICE OF THE GOVERNOR

2024 California Fair Season

Welcome to the 2024 California fair season!

California fairgrounds continue to play a vital role in our state. As we enter a new year, and prepare for the new fair season, there is so much to be excited about. As a California fair exhibitor, you have a key part to play in teaching the public about the history of agriculture and its importance for the Golden State. Whether you are a new or a seasoned exhibitor, this is a unique opportunity to engage with members of your community, form a connection with California's farmers and ranchers, and attract future generations of agricultural leaders.

Annual fairs in California provide an invaluable family experience and proudly display our state's vast diversity of cultures and traditions, all while operating as economic engines and creating jobs within their communities. When fairgrounds are not hosting their annual fairs and other events, they serve their communities as resilience centers. During various floods, storms, and wildfires last year, fairgrounds across the state were activated by their local Office of Emergency Services to serve as evacuation centers for people, pets, and livestock.

Time and time again, fairgrounds demonstrate their importance to our state, and so much of this would not be possible without the good work of our dedicated fair exhibitors. Thank you for your advocacy and commitment to our state and the agricultural community. We look forward to another successful year in 2024!

Sincerely,

A handwritten signature in black ink, appearing to read "Gavin Newsom", written over a horizontal line.

Gavin Newsom
Governor of California

GOVERNOR GAVIN NEWSOM • SACRAMENTO, CA 95814 • (916) 445-2841



CALIFORNIA DEPARTMENT OF
FOOD & AGRICULTURE
Karen Ross, Secretary

January 8, 2025

On behalf of the California Department of Food and Agriculture, a warm welcome to you as we all prepare for the exciting 2025 fair season! We are thrilled you are joining us this year and sincerely thank you for your continued involvement in showcasing your products, livestock, and expertise. Your contributions help make our fairs successful and provide an invaluable experience for our communities.

Fairs play an essential role in connecting food and agriculture with the public. They are not only a time for us to celebrate the fruits of our labor, but also serve as a critical platform for educating future generations about the importance of farming and food production, livestock management, and sustainable practices. Through your participation, you directly contribute to the appreciation of the vital role agriculture plays in our lives and foster an understanding of the tremendous diversity, innovation and new technology that create new opportunities in agriculture and our rural communities.

The fairgrounds are not just a venue for the annual events. Throughout the year, they serve as a hub for various interim activities that support local economies, offer educational programming, and foster community engagement. From hosting agricultural workshops and livestock sales to providing facilities for regional competitions and cultural festivals, the fairgrounds contribute to the vibrancy and resilience of our agricultural community. Additionally, they play an important role in emergency preparedness, providing a space for disaster response and recovery efforts during critical situations, such as flooding or extreme weather events.

We understand the dedication and hard work that goes into preparing for the fair, and we want to express our deep gratitude for your commitment to making each fair season a success. Your participation ensures the continued relevance of our fairs and strengthens the agricultural ties that bind us all together as a community.

We look forward to this fair season and its great success!

Yours truly,

Karen Ross
Secretary



TABLE OF CONTENTS

Important Information to Know	6
Contact	6
Entry Dates & Deadlines.....	6
Why Enter the Competition?	6
Competition Overview	7
Who Can Enter & Entry Fee.....	7
Entry Deadline.....	7
How To Enter	7
Photographing Your Entry.....	9
Rules & Requirements	10
Entries.....	10
Display of Accepted Entries.....	11
Disclaimers	11
Special Conditions For Limited Entries.....	12
Delivery, Shipping, & Pick-up	13
Hand Delivery & Pick-up.....	13
Show Selection Notification.....	13
Shipped Entries.....	14
Judging	14
Awards	15
Fiber & Needle Crafts Awards	15
Quilt Awards	15
Sales Information	16
Divisions & Classes: Fiber & Needle Crafts	16
Division 155: Crochet.....	16
Division 157: Embroidery (Counted Techniques).....	17
Division 158: Embroidery (Non-Counted).....	17
Division 159: Handspun Yarn.....	17
Division 160: Knitting	18
Division 163: Needlepoint.....	18
Division 165: Other Fiber Art	18
Division 167: Rugs.....	19
Division 170: Wearing & Designer Apparel	19
Fiber & Needle Crafts Judging Criteria	19
Fiber & Needle Crafts Sponsor Awards.....	20

Divisions & Classes: Quilts21

- Division 191: Applique Quilts21
- Division 192: Art Quilts21
- Division 196: Miniature Quilts.....21
- Division 197: Other Technique Quilts22
- Division 198: Pieced Quilts.....22
- Division 199: Modern Quilts.....22
- Quilt Judging Criteria23
- Special Rules..... 24
- Quilt Sponsor Awards 24

Division 225: Crafts Special Contest: Action Sports25

2025 General Rules26

Please visit the following link for rules online:

<https://calexpostatefair.com/wp-content/uploads/2025/01/25-General-Rules.pdf>

IMPORTANT INFORMATION TO KNOW

Contact: Deborah Godfrey

California Crafts Coordinator

Phone: (916) 799-7866 & E-mail: dgodfrey@calexpo.com

Entry Dates & Deadlines:

February 7	Entries Open Registration online
May 15	Entries Close online at 11:59 PM & entry fees must be paid
May 23	Preliminary Acceptance Notification Email by 6 PM
May 30	Shipped entries due
May 30 & May 31	Hand deliver entries between 9AM - 5PM
June 9	Displayed Work Notification Email by 6 PM
June 13 & 14	Pick up non-displayed items 9AM - 5PM (EXPO CENTER, BUILDING 8)
July 11	Exhibition Opens. Award Results posted online
July 13	Awards Ceremony (Expo Center, location based on weather)
July 28 - Aug 2	Pick up exhibits 9AM - 5PM
August 1	Begin returning shipped items

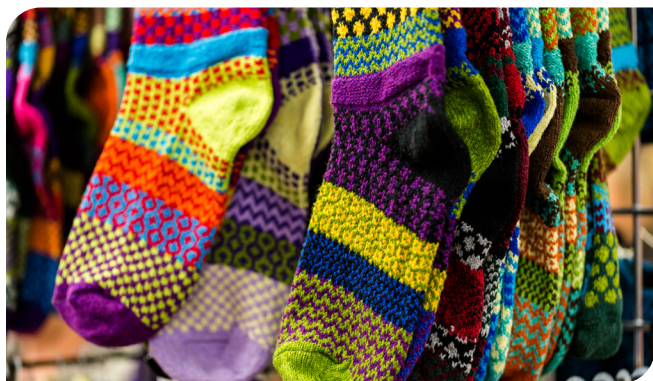
The California State Fair July 11-27, 2025

The California State Fair has always been the awe-inspiring showcase of the state's finest, and ever since the first fair in 1854, California has upheld this tradition. People come from all over to witness the competition and innovation that our exhibitors produce. We continue to add new and exciting competitions to our competitive programs to showcase California's very best!

Why enter the Competition?

Making something that is beautiful, useful, decorative, intricate and/or challenging is an accomplishment in itself. Artisans and craftspersons spend many hours perfecting their techniques and finding just the right materials. The resulting items are frequently admired by family, friends, and acquaintances. Entering the item into a competition is a way to share it with a much wider audience and gain accolades far beyond one's closest family and friends. Exhibited items can inspire fair visitors to learn a new skill or perfect one that they've been working on for a while and adds value to the craft. In the end, everyone wins!

COMPETITION OVERVIEW



The mission of California Fiber & Needle Crafts is to provide, through fair and equitable competition, a California State Fair exhibit of the finest examples of crafts being done in the state.

Who Can Enter & Entry Fee

California residents who have reached 18 years of age as of January 1, 2025. All entries must be made by California residents!

Needle and Fiber Art - \$12

Quilts - \$15

Special Contests: Action Sports - \$12

Entry Fee is non-refundable.

Entry Deadline

All entries must be registered online an image of your entry uploaded, and entry fees paid, at <https://calexpos.fairwire.com> by 11:59 pm May 15, 2025. Late entries will not be allowed.

How to Enter

1. Go to **CalExpoStateFair.com/Competition** and click on the **California Crafts** icon under the competitions page and follow the instructions. Use a Visa or Master Card to pay the entry fees.
 - a. Names, titles, addresses, etc. will be used **exactly** as entered for award tags and payment of award premiums. Please pay special attention to proper spelling, capitalization, full name of cities/counties, no abbreviations, and the correct mailing address.
 - b. **“Descriptions”** may not contain personally identifying information. List any kits, materials, and techniques used only.
2. **You must upload a photograph of each item to complete your entry. The photograph has no bearing on if your item is accepted. All items entered in the Fiber & Needle Crafts divisions will be accepted for**

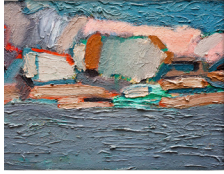
judging as long as they meet standards and requirements. The photograph is required for identification and entry tag purposes only.

3. After payment of fees within ShoWorks, a box will appear with a notification.
 - a. Click the **“Upload Files”** button.
 - b. Confirm that the Division and Class across the top of the window are correct for the entry image files being submitted.
 - c. Click **“Choose File”** and choose a saved file from your computer. Click **“Open.”**
 - d. Confirm that the thumbnail to the right of the title is the correct photo and Click **“Upload.”**
 - e. When progress bar reads **“100%”** and **“Upload Complete”** click the **“Next”** button.
 - f. If you have another entry, continue to upload required photos repeating steps.
 - g. When all images are uploaded, click **“Done.”**
 - h. If after you have finished and quit, you discover you have uploaded the wrong image file(s) you can log back into **“My Account”** and select **“View/Print transactions made by the Exhibitor”** and select the **“Upload Files”** button. The second upload to entry will replace the initial image with the newly uploaded file.
4. The California Crafts competition is unique in the work cannot be adequately judged from a photograph. The photograph submitted at the time of entry is used to determine that the entry meets the standards of the basic rules and requirements of the competition, and to determine if the work is entered in the correct Division and Class. ***Notification of acceptance (Accepted/Not Accepted) will be posted to the California Crafts web page CalExpoStateFair.com/crafts/.*** Exhibitors will receive an **“Accepted”** email via the submitted email address. Results will be posted by entry number and listed by Division and Class are scheduled to be posted on June 6, 2025 by 6pm. No results will be given over the phone. Any work not named on the accepted list should not be delivered to Cal Expo.
5. **“Accepted”** entries must be delivered to Cal Expo for a Confirmation Judging where placings will be determined. (see Calendar)

Photographing Your Entry for the CALIFORNIA State Fair

Fill the Frame

Get as close to your artwork as possible. Make sure only your artwork fills the entire frame.



DO NOT Include Background Items

For 3-D items, use draped fabric for a neutral background. Include frame only if considered part of the artwork.



Shoot Straight

Stand your art up straight and take your photo at the same level as your artwork.



Use Natural Light

Outdoor light gives the best results. A flash may reflect off of smooth surfaces or make your image look flat.



Focus

Make sure your photo is in focus.



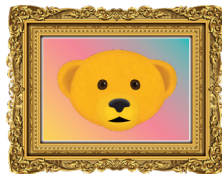
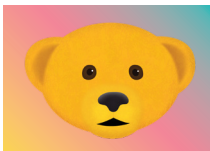
3-D Entries

Photograph 3-D entries from 3 different angles to show every detail.



Photographs & Graphic Arts

Convert the original image file to a 6MB .jpeg, .gif, .bmp, .png, or .tiff file.



Square It Up!

Objects look rounded when photographed too close. Back up, retake the shot, & crop image.



OTHER TIPS

- ✓ Digital images must be an accurate representation of the artwork. Misrepresented entries will be disqualified and not exhibited.
- ✓ If the artwork is already framed, take it out of the frame if possible to photograph it.
- ✓ Do not caption or “watermark” the digital image.
- ✓ Photo maximum file size: 7MB If the file size is larger, use a photo editing program to resize file. Free programs available: Microsoft Image Resizer, Microsoft Photo Editor, Picasa, Infranview, Photoscape, and others.
- ✓ Save images in RGB only.

RULES & REQUIREMENTS

There are no prerequisites for entry into this competition.

Entries

- 1. All entries must be original work created by the entrant and cannot include any element created or significantly altered using Artificial Intelligence (AI).**
- 2. There is a limit of 3 entries in a single Class per individual.** This means for example, that you may enter up to three (3) items in a Division's Class 1 and up to three items in each of Class 2, 3, and 4.
3. All entries must be the work for the exhibitor who is entered and to whom the premium will be paid. Except for quilts entered into a Class of quilts completed by two or more people.
4. Entries must be complete, new, clean, sanitary and made within the past two years. Soiled entries (including apparel) may be disqualified. Damaged entries will not be accepted. Wet or otherwise unfinished items will not be accepted.
5. When photographing your entry, do not include extra items/props with the item to be judged.
6. Same or identical items cannot be entered in more than one competitive Division or Class with the exception of items also entered into Special Contest. Entries may not be entered into California Fiber & Needle Crafts more than once.
7. Entries may not be entered into California Fiber & Needle Crafts Competition more than once.
8. Entries must be entered in the Division or Class which is the most appropriate for the items and is the main focus of judging.

Example: If you are entering a quilt, however, the squares are embroidered, and you want the embroidery to be the focus of judging, enter the Fiber & Needle Crafts Competition, Embroidery Division. If you want the quilting to be the focus of judging, enter the appropriate Quilt Division.
9. Transfers: At the discretion of the Judges or Program Coordinator, an entry may be transferred to a Division or Class deemed more appropriate or where it may be more competitive.

10. Commercial Kits: If a commercial kit was used in the construction of the entry it **must be listed** under “Description” when entering online.

Display of Accepted Entries

1. Entries requiring hanging must be securely wired or equipped for hanging.
2. Three-dimensional entries not intended to hang are to be on a base when necessary for structural support and proper presentation. The Fair may at its discretion choose not to use the base provided by the exhibitor.
3. The manner of display and the placement of entries is entirely at the discretion of the California State Fair. Care will be taken to assure the proper and appropriate display of all entries.
4. The State Fair cannot guarantee that all display requirements of an entry can be provided (i.e., electricity, showcase, pedestal, special lighting, special location, water source, computer service, or any other special requirement).
5. Entries winning 1st, 2nd, and 3rd will be displayed. Honorable Mention will be displayed, as space allows.

Disclaimers

1. Although great care will be exercised in the course of receiving, handling, and displaying entries, the Fair is not responsible for any technical malfunctions, failures, omission, interruption, or defect of any entries, nor are we responsible for entries that are not received in accordance with rules due to a computer or electronic malfunction, or other reason.
2. The Fair is not responsible for any display props left with the work. The submission of display props is neither encouraged or required, and they are left at the risk of not being returned to the exhibitor.
3. Insurance is the responsibility of the exhibitor. The Fair does not ensure entries and is not responsible for any loss, damage or theft of entries.
4. Photographs are taken throughout Cal Expo during the Fair and are used for publicity purposes and archives. By submitting your entry, exhibitors are giving the Fair permission to use photographs without compensation to, or prior approval from, the exhibitor.

Special Conditions For Limited Entries

If there are fewer than three (3) entries in a Division or Class, these entries, though dissimilar, will be awarded and judged as one Class. First, second, and third place, and Best of Division will be awarded, entries will still be eligible for Best of Show.

Example: A Division received only one entry in each of three Classes. These three entries will be combined as a Class and awarded 1st, 2nd, and 3rd, and Best of Division.

DELIVERY, SHIPPING, & PICK UP

Hand Delivery & Pick-up:

1. Hand deliver entries to Cal Expo Fairgrounds, **Expo Center Building #8**, (See Map and Calendar) and follow signage to the building.
2. Entry will receive a Claim Ticket at drop off. Please retain this ticket to redeem your entry after the Fair.
3. Entrants are responsible for the unloading and loading their items. If size and bulk requires special equipment for unloading, please contact the California Fiber & Needle Crafts Coordinator prior to delivery.
4. Post Fair, pick-up all entries from **Expo Center, Building #8**. (*See Map and Calendar and follow signage*)
5. Directions to Expo Center: enter Cal Expo Fairgrounds via Gate 12 at Ethan and Hurley Way and follow the access road past the waterpark, Expo Center is directly ahead.
6. If someone other than the entrant will be picking up an entry, they must bring a signed letter of authorization from the artist. No exceptions.
7. Exhibitors unable to pick up entries must send in an envelope or box with shipping information and pre-paid postage to have their entries shipped back to them. Please also include shipping form, available online at CalExpoStateFair.com/competitions.
8. Entries not picked up **by September 1, 2025**, are considered abandoned and will be recycled or donated.

Show Selection Notification:

During in person judging the entries will be placed (1st, 2nd, 3rd, etc.). Those being selected for awards will be displayed. Notification of acceptance (Accepted/Not Accepted) will be posted to the California Crafts web page CalExpoStateFair.com/crafts/. Results will be posted by entry number and listed by Division and Class. Order of the results displayed is not indicative of the placings. Results are scheduled to be posted on June 6th by 6 pm. No results will be given over the phone. Any work not named on the accepted list must be picked up on June 13 or 14 between 9 am and 5 pm.

Shipped Entries:

1. Shipped entries arriving at the California State Fairgrounds after the Delivery Deadline of May 30, 2025 (see calendar) will not be judged or displayed.

Mail or ship **“Accepted”** entries to:

California Fiber & Needle Crafts Competition

California State Fair
Administration Building
1600 Exposition Blvd.
Sacramento, CA 95815

2. All shipped entries must be accompanied by a Shipping form available online at CalExpoStateFair.com/competitions.
3. Entrants assume all responsibility for the condition of their entry and the quality of the shipping containers. Shipping insurance is the responsibility of the exhibitor.
4. Shipping containers must be reusable for return shipping purposes. The Fair will not provide any additional packing material.
5. Shipped framed entries must have Plexiglas, not glass.
6. Shipped or mailed entries will be returned after August 1, 2025.

JUDGING

1. The American System of Judging is used for the evaluation of entries in California Fiber Crafts.
2. The California State Fair engages judges who are well qualified in the field (or fields) they judge.
3. The decisions of the judges are final.

AWARDS

The California State Fair will award the following:

FIBER & NEEDLE CRAFTS AWARDS

Best of Show	\$100 and Golden Bear Trophy
Best of Division	Rosette and \$50
1 st Place	Ribbon and \$40
2 nd Place	Ribbon and \$30
3 rd Place	Ribbon and \$20
Honorable Mention	Ribbon

QUILT AWARDS

Best of Show	\$100 and a Golden Bear Trophy
Best of Division	Rosette and \$50
1 st Place	Ribbon and \$60
2 nd Place	Ribbon and \$50
3 rd Place	Ribbon and \$40
Honorable Mention	Ribbon

For Additional Sponsored Awards, see Competition Divisions.

1. No exhibitor will be paid more than two cash awards in any one Class.
2. **Best of Division Awards:** First Place winners in each Class are eligible for Best of Division.
3. **Best of Show Awards:** Best of Division winners are eligible for Best of Show.
4. All Awards are based on merit and may or may not be awarded at the judge's discretion.

For those entrants not able to attend awards ceremony on July 13th, ribbons and trophies will be available for pick up during pick up dates or mailed with shipped/returned entries after the Fair. See Calendar for entry pick up & shipping dates.

SALES INFORMATION

Entrants will have the option of placing their work for sale. When setting the price of their work, entrants are advised to take into consideration the commission, the cost of framing and/or otherwise preparing their work for display, as well as the cost of delivery of their work. **A commission of 30% of the purchase price** on each item sold will be retained. A portion of the commission will be donated to the Friends of the California State Fair Scholarship Fund. Sales tax will be charged to these sales. The Fair will not ship purchases to buyers, and items must be picked up by the buyer after the Fair.

FIBER & NEEDLE CRAFTS DIVISIONS & CLASSES

Entry Fee, all classes - \$12.00 per entry

Special Rules included here are in addition to the Rules and Requirements and the General Rules.

Division 155: Crochet

Class 1 - Crocheted Afghans

Class 2 - Crocheted Wearing Apparel

Class 3 - Crocheted Doilies

Class 4 - Any other Crocheted Item

Notes for Division 155:

- a. **Class 1:** Afghans may be any size.
- b. **Class 2:** Wearing Apparel may be of any size.
- c. **Class 4:** Includes, but is not limited to bed coverings, table coverings, window coverings, tea cozies, pillows, pillow cases, etc.

Division 155 does not include toys. Enter toys into the Dolls and Toys Division 106 in the Handcrafts Competition.

Division 157: Embroidery (Counted Techniques)

Class 1 - Traditional Cross Stitch

Class 2 - Sampler

Class 3 - Non-Framed

Class 4 - Other

Notes for Division 157:

- a. **Class 1:** Work must be framed.
- b. **Class 2:** Samplers must be framed. Samplers must include two or more counted techniques in the entry.
- c. **Class 3:** Includes, but is not limited to pillows, bell pulls, etuis, etc.
- d. **Class 4:** Includes, but is not limited to blackwork, hardanger, cutwork, pull work, silk/metal, etc.

Division 158: Embroidery (Non-Counted)

Class 1 - Surface Techniques: Framed

Class 2 - Surface Techniques: Non-Framed

Notes for Division 158:

- a. **Class 1 & 2:** All embroidery must be completed by hand. Includes, but is not limited to crewel, whitework, shadow work, silk, ribbon, stumpwork, Brazilian, needle lace, beading, etc.
- b. Entries will be judged on embroidery styles and elements only.
Example: A garment or quilt submitted to this Division will be judged on embroidery alone. To be judged as a whole, quilts should be entered in a quilting Division and garments into Wearable Art or another garment construction Class (Division 170).
- c. All entries should represent finished items, not samples.

Division 159: Handspun Yarn

Class 1 - Art/Textured

Class 2 - Wool

Class 3 - Plant Fibers

Class 4 - Luxury Fibers

Notes for Division 159:

- a. Submit only one skein per entry.
- b. Include fiber type and the intended end use in the “description” field when entering.

- c. Do not attach or include a sample of the fiber or list of fibers used such as “angora and silk.”
- d. Each skein must be tied loosely with matching yarn in 3 to 4 places in figure eight.
- e. **Class 3:** Includes, but is not limited to cotton, ramie, hemp, flax, rayon, bamboo, etc.
- f. **Class 4:** Includes, but is not limited to llama, alpaca, camel, quiviut, etc. Entries in this class must be 75% luxury fiber.

Division 160: Knitting

Class 1 - Sweaters & Skirts

Class 2 - Shawls & Scarves

Class 3 - Wearable Accessories

Class 4 - Other Knitted items

Notes for Division 160:

- a. Machine knitted items are not eligible for entry.
- b. **Class 1, 2, & 3:** Wearable items may be for youth, adults, or pets.
- c. **Class 3:** Includes, but is not limited to socks, gloves, mittens, and hats.
- d. **Class 4:** Includes, but is not limited to afghans (may be any size), tablecloths, bags, wall hangings, bed coverings, art pieces, etc.

Division 163: Needlepoint

Class 1 - Framed

Class 2 - Non-Framed

Notes for Division 163:

- a. Entries should be worked on needlepoint canvas. Works on plastic canvas are not eligible for entry.
- b. **Class 2:** Includes, but is not limited to pillows, Christmas stockings, holiday ornaments, decorations, bell pulls, 3-D forms, or sculptural forms, etc.

Division 165: Other Fiber Art

Class 1 - Lace/Tatting

Class 2 - Felting

Class 3 - Weaving

Class 4 - Any Other Fiber Art

Notes for Division 165:

- a. **Class 4:** includes, but is not limited to soft sculpture, pillows, wall hangings, etc.

Division 167: Rugs

Class 1 - Traditional Hooked Rugs

Class 2 - Braided Rugs

Class 3 - Other Rugs

Class 4 - Modern

Notes for Division 167:

- a. Items entered in this Division should be intended for use on the floor. Wall hangings and other hooked wool items may be entered in Division 165, Class 4, Any Other Fiber Art.

Division 170: Wearing & Designer Apparel

Class 1 - Modern Apparel

Class 2 - Costumes & Historical Apparel

Class 3 - Wearable Art

Class 4 - Upcycle Fashion

Notes for Division 170:

- a. **Class 1:** Items should be a stitched garment. Woven, knitted or crocheted garments should be entered in Division 155, 160, or 165.
- b. **Class 2:** For Costumes and Historical Apparel, please detail the technique used in the “description” field when entering. If more space is required, submit a typed description with garment upon delivery. Descriptions are for judging purposes only and may not be displayed or returned.
- c. **Class 3:** Includes, but is not limited to, garments made of hand-woven fabric, garments made from non-fabric materials, garments that incorporate electronics, or other technology.
- d. **Class 4:** Must be handmade solely from recycled or re-purposed materials. Use of props/embellishments are not allowed.

Fiber & Needle Crafts Judging Criteria

- Workmanship
- Level of Difficulty
- Design, including color and texture
- Appropriate Technique
- Creative use of materials

Fiber & Needle Crafts Sponsor Awards

Each year, Special Awards of cash, gift cards, gift certificates and other prizes are donated to the competition by Organizations, Guilds, Businesses, and Individuals. Some of these awards are specific to a particular show, a Division or a Class.

*This section will be updated as sponsors and donors are identified.

QUILT DIVISIONS & CLASSES

Entry Fee, All Classes - \$15.00 per entry

Special Rules included here are in addition to the Rules and Requirements and the General Rules.

Division 191: Applique Quilts

Class 1 - One Person - Small

Class 2 - One Person - Medium/Large

Class 3 - Two or More People - Small

Class 4 - Two or More People - Medium/Large

Division 192: Art Quilts

Class 1 - Small

Class 2 - Medium/Large

Notes for Division 192:

Art Quilts must be an original design, meant to be used as a work of art, and made entirely by the entrant.

Division 196: Miniature Quilts

Class 1 - One Person

Class 2 - Two or More People

Notes for Division 196:

Miniature quilts are large scale quilts made in a miniature size consisting of traditional piecing and/or applique blocks; completed/repeated blocks are usually no more than 3"-4", and overall quilt size is no larger than 24" in either dimension.



Division 197: Other Technique Quilts

Class 1 - One Person - Small

Class 2 - One-Person - Medium/Large

Class 3 - Two or More People - Small

Class 4 - Two or More People - Medium/Large

Class 5 - Other Quilted Items

Notes for Division 197:

- a. Other Techniques include, but are not limited to, Yo-Yo, Whole Cloth, Cathedral Window, Origami, etc.
- b. **Class 5:** other quilted items include, but are not limited to wearable art, accessories, such as vests, jackets, purses, and hats, and home use items such as, table runners, tree skirts, etc.

Division 198: Pieced Quilts

Class 1 - One Person - Small

Class 2 - One Person - Medium/Large

Class 3 - Two or More People - Small

Class 4 - Two or More People - Medium/Large

Division 199: Modern Quilts

Class 1 - One Person - Small

Class 2 - One Person - Medium/Large

Class 3 - Two or More People - Small

Class 4 - Two or More People - Medium/Large

Note for Division 199:

Quilts in this Division should be primarily functional and inspired by modern design. These include, but are not limited to, the use of bold colors and prints, high contrast, graphic areas of solid color, inventive piecing, minimalism, expansive negative space, and alternate grid work.

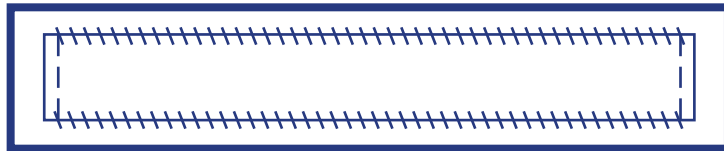
QUILT CRITERIA

Judging Criteria

- Workmanship (including finishing)
 - Level of Difficulty
 - Design Elements (balance, color, contrast, unity)
 - Technical Elements (technique or multiple techniques)
1. A quilt must be three layers (two layers of fabric separated by a layer of batting) held together by stitches.
 2. Small quilts have a perimeter of 240 inches or less.
 3. Medium/Large quilts have a perimeter of 241 inches or more.
 4. Miniature quilts are defined as being miniaturized versions of full size quilts, consisting of traditional pieced and/or applique blocks of no more than 3"-4", and overall quilt size of no larger than 24" in either dimension.
 5. Two or More People Quilts: Any quilt whose entirety was not the sole work of one individual.
 6. Quilts entered in the California State Fair must be completely California-made. Quilts with any portion made or quilted out of state do not qualify for the California Fiber & Needle Crafts Competition. All participants must be California residents.
 7. Art Quilts must be an original design, meant to be used as a work of art, produced with creative thought without copying the work of others.
 8. Applique quilts should be mainly applique and may be based either on traditional or innovative patterns and settings.
 9. Pieced Quilts are made by sewing together smaller pieces of fabric into a larger "block" of fabric to create the basic unit. Quilts in this category should be mainly pieced and may be based either on traditional or innovative patterns and settings.

Special Rules

10. Quilt Sleeve: All entries entered in any Quilt Division must have a sleeve basted (sewn) across the entire top edge of the quilt for display purposes. (See illustration below.) The opening must be 4 inches from seam to seam for all quilts other than miniature quilts.
11. Miniature quilts must have a minimum 2-inch sleeve basted (sewn) across the entire top edge of the quilt for display purposes.
12. Quilts with a sleeve smaller or larger than 4 inches or a sleeve that is not securely attached (sewn) will be disqualified. The State Fair will check all quilts before they are judged for competition to be sure they qualify.
13. Illustration of quilt sleeve attachment:



DONOR QUILT AWARDS

*This section will be updated as sponsors and donors are identified.

CRAFTS SPECIAL CONTEST

Entry Fee: \$12 per entry

Special Rules included here are in addition to the Rules and Requirements and General Rules.

Division 225: “Action Sports”

Concept:

Cal Expo is proud to be hosting the 2025 Summer X-Games. In anticipation of this event, the special contest this year is Action Sports. Entries should reflect various events in X-Games such as skateboarding, BMX, freestyle motocross, skiing, snowboarding, or any other action sport.

Class 1 – Fiber & Needle Crafts

Class 2 – Handcrafts

Notes for Division 225:

- a. In addition to entry into Fiber & Needle, or Handcraft classifications, entries may also be entered into Special Contest.
- b. Items should be primarily handmade. Upcycled items may be used. Entry description must note portions of entry that are upcycled and not handmade.

“Action Sports” Judging Criteria:

- Level of Difficulty and/or Skill
- Craftsmanship
- Creative use of materials or fabric
- Relationship to concept/theme

SPECIAL CONTEST DEPARTMENT AWARDS

Best of Division	Rosette and \$50
1 st Place	Ribbon and \$40
2 nd Place	Ribbon and \$30
3 rd Place	Ribbon and \$20
Honorable Mention.....	Ribbon

2025 GENERAL RULES

CLICK LINK OR SCAN QR CODE TO VIEW GENERAL RULES ONLINE:

<https://calexpoStateFair.com/wp-content/uploads/2025/01/25-General-Rules.pdf>

