

FINE ARTS

2020 COMPETITION GUIDE

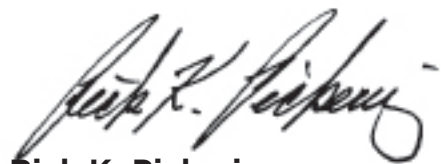
It's your moment to shine!
Enter today.

For more than 160 years the California State Fair has been a constant showcase of the talents and achievements of the people of California. Entering into the California State Fair's 2020 Competitive Exhibits Program allows you the opportunity to showcase your abilities, and revel in your accomplishments!

The California State Fair's friendly competitions are designed to recognize the best of the Golden State. Our Competitive Programs inspire talented Californians, as well as highlight the latest advances in technology, agriculture, and industry.

More than 750,000 visitors are expected at the State Fair this summer. Your work is an integral part of the State's celebration, and we look forward to placing your talent on display at the State Fair from July 17 - Aug 2, 2020. We encourage you to enter today and begin making lasting memories for yourself, your family, and for the hundreds of thousands of State Fair patrons!

Sincerely,



Rick K. Pickering
Chief Executive Officer

GOVERNOR

Gavin Newsom

CALIFORNIA STATE FAIR BOARD OF DIRECTORS

Chair, Jess Durfee, San Diego

Vice Chair, Rex S. Hime, Loomis

Rima Barkett, Stockton

Sonney Chong, Sacramento

Rina V. DiMare, Clarksburg

David Mallel, Calabasas

Brian May, Sacramento

EX-OFFICIO MEMBERS

Senator Richard Pan M.D.

Senator Cathleen Galgiani

Assembly Member Kevin McCarty

Assembly Member Susan Eggman

CHIEF EXECUTIVE OFFICER

Rick K. Pickering

AG PROGRAM MANAGER

Jay Carlson

PROGRAM MANAGER

Rachelle Weir



OFFICE OF THE GOVERNOR

California Agriculture Fair Season

On behalf of the State of California, it is my pleasure to welcome you to the 2020 fair season.

When we talk about building a California For All, our network of fairs provides an excellent example. Fairs serve communities throughout our great state, and they showcase the breadth of our diversity, inclusivity and innovation.

California's fairs introduce our children to a wondrous agricultural bounty - a point of pride for the Golden State. The livestock competitions, educational exhibits, exhilarating carnival rides, live performances, entertainment, and offerings from local vendors featured at our fairs highlight California's cultural heritage.

As exhibitors, the fair provides you with the opportunity to showcase your hard work and commitment. Through your exhibits, the community learns more about California and its agriculture and values.

Thank you for your support, participation, and for playing a vital role in California's agricultural community.

Sincerely,

GAVIN NEWSOM
Governor of the State of California



December 16, 2019

We can take pride in the fact that California fairs are world leaders in providing educational and competitive exhibits that showcase local communities and their talents, as well as providing a venue for all cultures and lifestyles to promote diversity within the community.

California fairs encourage their communities to learn more about the bounty of California agriculture. They foster the reconnection of consumers to the land and to the people who produce their food.

Fairs are a tradition for families and communities to come together to create lasting memories. However, our fairgrounds are much more than just a place to celebrate. We cannot overlook the events that take place at our fairgrounds throughout the year; from crab feeds to weddings and, as needed during emergency situations, fire camps and evacuation centers.

As we look ahead to the year 2020, I would like to express my appreciation for all fairground's staff, volunteers, and others who share a commitment to serve their local communities. Thank you all very much. Your support of California fairgrounds is invaluable.

Yours truly,



Karen Ross
Secretary



TABLE OF CONTENTS

Important Information to Know	7
Contact	7
Entry Dates.....	8
Why Enter the Competition?	8
Competition Overview	9
Who Can Enter & Entry Fee.....	9
New for 2020.....	9
Entry Deadline.....	9
How to Enter.....	10
Requirements for Digital Images	10
Eligibility	10
Photographing Your Entry for the CA State Fair	12
Rules & Requirements	13
Requirements	13
Rules for Accepted Entries.....	13
Display Requirements: Two-Dimensional Artworks	14
Three-dimensional artworks designed to hang	15
Three-dimensional artworks designed to be free-standing	15
Disclaimers	15
Delivery, Shipping, & Pick-up	16
Hand Delivery & Pick-up.....	16
Shipped Entries.....	17
Judging	18
First Round.....	18
Second Round.....	18
Jury	19
Awards	19
Art Sales Information.....	21
Divisions & Classes	21
Division 400 - 2D Artworks/Brushworks	21
Division 405 - 2D Artworks/NonPainting	21
Division 410 - 3D Artworks.....	22
Division 415 - Digital Artwork.....	22
Plein Air	23
Division 460 - Special Contest: Plein Air	23
Rules	23
Judging.....	25
To Enter the Special Contest	25

2020 General Rules.....	26
Exhibitors Entry Responsibilities.....	26
Still Exhibits.....	26
Livestock & Ag Mechanics.....	26
Entry Limit.....	27
Ownership of Entry.....	27
Exhibitor Liability.....	27
No Guarantee.....	28
Division/Class Cancellation.....	28
Entry Errors.....	28
Substitution.....	28
Previously Entered Entry.....	29
Verification.....	29
Responsibility.....	29
Removal of Entries.....	29
Dishonored Checks.....	29
Entry Fees.....	29
Late Entries.....	30
Design.....	30
Juniors Entering Senior Department.....	31
State Fair Employee Participation.....	32
Disqualification.....	32
Entry Disqualifications/Transfers.....	32
Disqualifications.....	32
Cooperation.....	33
Public Disturbances.....	34
Probation.....	34
Judging.....	34
Judging.....	34
Judge/Exhibitor Information.....	34
Judge/Fraternization/Criticism.....	34
Judge’s Decision.....	35
Chief Judge Policy.....	35
Protests.....	35
Awards.....	36
Special Awards.....	36
Tax Laws.....	36
Premium Awards.....	36
Age Requirements.....	37
Junior Exhibitors Membership Age and Affiliation Requirements.....	37
Independent Junior and Grange Age Requirements.....	38
FFA Age Requirements.....	38

Independent and Grange Animal Exhibitors.....	38
Member Standing and Ownership Requirements	39
Eligibility Questions	39
4-H Age Requirements.....	39
Independent Junior and Grange Age Requirements.....	40
No Dual Affiliation in Competition	40
Adult Supervision Requirement	40
FFA Supervision Requirement.....	40
Uniforms.....	40
Free Speech Activities Guideline	41
Definitions	42

IMPORTANT INFORMATION TO KNOW

Contact: Emily Reed

Fine Art Coordinator

Phone: (916) 263-3135 & E-mail: fineart@calexpo.com

Entry Dates:

FINE ART	
February 27	Entries Open registration online
June 5	Entries Close online 6:00PM & entry fees must be paid & upload image
June 12	Accepted artwork announcement
June 27	Artist's statements due by email
June 27	Hand deliver accepted artworks, accepted entry form, & artist resume, Expo Center building #7, 9AM - 5PM
June 27	Shipped artworks, accepted entry form, & artist resume, due 5:00PM
July 17	Exhibition Opens
July 25	Judge's Art Walk begins at 11:30 AM
July 25	Awards ceremony in expo center building #7
August 2	Exhibition Closes
August 8	Pick up artworks & awards, Expo center building #7, 9AM - 5PM
August 10	Shipped artworks packed and returned following this date
PLEIN AIR	
February 27	Entries Open Registration online
July 8	Plein Air Entry Close online at 6:00 PM & entry fees must be paid
July 25-26	Painting is done around the fair grounds
July 26	Completed paintings submitted to building #7 by 4 PM
July 26	Judging & Award 6:00 PM
July 26 or August 8	Plein Air Artwork can be pick up

The California State Fair July 17 - August 2, 2020

The California State Fair has always been the awe-inspiring showcase of the state's finest, and ever since the first fair in 1854, California has upheld this tradition. People come from all over to witness the competitions and innovations that our exhibitors produce. We continue to add new and exciting competitions to our competitive programs to showcase California's very best!

Why enter the competition?

The Fine Art competition has attracted many artists in the visual arts for more than 160 years. Exhibiting at the California State Fair is a great way to build exhibition credits on your resume, with the added opportunity to sell your work. Exhibiting at the State Fair also exposes your artwork to a large and diverse audience. Entering is a great way to gain experience in submitting artwork to galleries and national and international shows.



COMPETITION OVERVIEW



The California Fine Art Competition and exhibition is recognized as one of the Golden State's largest and most prestigious juried art shows.

You are invited to enter the California State Fair's juried fine art competition for California artists 18 years of age or older. Although we may publish a prospectus of the competition, this document is the over-riding authority for competition rules and requirements. We wish you success in this competition and hope you will join us for sharing the best moments of summer at the 2020 California State Fair on July 17 - August 2.

Who Can Enter & Entry Fee

California residents who have reached 18 years of age as of January 1, 2020.

\$20.00 per artwork

\$10.00 (plein air) per artwork

Online entries must be paid by Visa or Mastercard. Entry fees are non-refundable.

New for 2020

Judge's Art Walk

Join our head Judge on a walkthrough of the exhibit and learn why artwork is chosen for display.

Entry Deadline

All entries must be registered online, with an image of your entry uploaded, and all entry fees paid at **CAStateFair.org/FineArt** by 6:00 pm, June 5, 2020.

How to Enter

1. Review all information in this guide, taking note of entry deadlines, delivery dates and directions, entry requirements and rules, department name, entry divisions and classes you will enter.
2. You must pay your entry fees before uploading images.
3. Do not upload images using a cell phone.
4. Place all images to be uploaded in the same folder on your computer, so they are easily found.
5. Remember the names of the files to ensure you are uploading the correct image for each entry.
6. Internet browser must be up to date. Check the browser to make sure Flash add-on is enabled.

Attention Mac Users: ShoWorks requires an internet browser that has Adobe Flash enabled. Please use Internet Explorer, Chrome, or Mozilla Firefox when entering and uploading.

Requirements for Digital Images

7. Acceptable file formats are: .jpg (jpeg), .gif, .bmp, .png, or .tiff
8. Save images in RBG ONLY.
9. Maximum file size: 6MB.
10. Do not upload signed or watermarked images.
11. Two-dimensional entries are allowed only one image upload. Three dimensional entries are allowed three image uploads.
12. Diptychs and Triptychs are allowed only one image upload. Upload one image of the entire artwork. Put the word “diptych” or “triptych” or “set” in the description section of information.

Eligibility

1. Artists entering the competition must be residents of the State of California, who have reached 18 years of age as of January 1, 2020.
2. Entries must be original artworks created by the artist entering the competition. Artworks must have been completed within the past two years. The year the artwork was completed must be included as part of the online entry process.

3. An artist may enter an unlimited amount of artworks. Each artwork not identified as part of a diptych, triptych or set is considered an entry and must be accompanied by the entry fee. There is no limit on the number of entered artworks per artist that may be selected by the jurors for the exhibition.
4. Artworks previously accepted into any California State Fair competitive program may not be re-entered. Same or identical items cannot be entered and/or exhibited more than one California State Fair competitive program or in more than one competitive Division or Class.
5. Tutored works, class exercises, maquettes or other models of artworks, and reproductions, including Giclee or other prints of artworks, are ineligible and will not be accepted into the show.
6. This is an “open” juried show. Entries are not required to have won a previous competition (County Fair or other juried show).



Photographing Your Entry for the CA State Fair

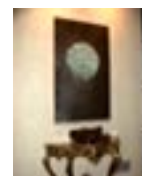
Fill the Frame

Get as close to your artwork as possible. Make sure only your artwork fills the entire frame.



DO NOT Include Background Items

For 3-D items, use draped fabric for a neutral background. Include frame only if considered part of the artwork.



Shoot Straight

Stand your art up straight and take your photo with your camera at the same level as your artwork.



Use Natural Light

Outdoor light gives the best results. A flash may reflect off of smooth surfaces or make your image look flat.



Focus

Make sure your photo is in focus.



3-D Entries

Photograph 3-D entries from 3 different angles to show every detail.



Photographs & Graphic Arts

Convert the original image file to a 6MB .jpeg, .gif, .bmp, .png, or .tiff file.



Square It Up!

Objects look rounded when photographed too close. Back up, retake the shot, & crop image.



OTHER TIPS

- ✓ Digital images must be an accurate representation of the artwork. Misrepresented entries will be disqualified and not exhibited.
- ✓ If the artwork is already framed, take it out of the frame if possible to photograph it.
- ✓ Do not caption or “watermark” the digital image.
- ✓ Photo maximum file size: 7MB If the file size is larger, use a photo editing program to resize file. Free programs available: Microsoft Image Resizer, Microsoft Photo Editor, Picasa, Infranview, Photoscape, and others.
- ✓ Save images in RGB only.

RULES & REQUIREMENTS

Requirements

1. Specific requirements listed under Entry Divisions and Classes on pages 12 and 14.
2. It is the responsibility of the artist to submit documentation as required. Do not send photo prints of artwork, exhibit history of artwork, artist's resume, artist's brochure, or artist's statement when entering. Materials other than those required will not be seen by the jurors. If/when the artwork is accepted into the exhibition, artists will be asked to submit a brief artist's statement and a resume.
3. Two-Dimensional (2-D) artwork may not exceed 108" by 108" [nine (9) feet by nine (9) feet, including frame. Three-Dimensional (3-D) artwork may not exceed forty (40) square feet of total floor space and a height of fifteen (15) feet. Due to safety concerns, artworks designed to hang from the ceiling may not exceed a total weight of five (5) pounds.
4. Due to facility limitations, certain art forms may not be suitable for entry (i.e., performance art or works that cannot be displayed without endangering the public). Artists are advised to contact the Fine Art Coordinator if they have concerns regarding the eligibility of their artworks in any division.

Rules for Accepted Entries

5. All accepted artwork must have the following information on or attached to the artwork: Artist's Name and Phone Number, Division and Class Entered, and the Title of the Artwork.
6. Artworks may not be altered in any way after they are accepted into the show. Artwork must be the same size as the size stated on entry.
7. Accepted artwork should be ready to display and delivered according to the hand-delivery or shipping dates and times listed in the Calendar.
8. Once delivered, artworks may not be removed from the exhibit by the artist (or purchaser) until the pickup date, list in the calendar.
9. The California State Fair assumes total design control over the presentation of the California Fine Art exhibit. An artist may suggest how to display his/her artwork, but no changes will be made after the exhibit is installed.

10. Certain entries (i.e., electronic or kinetic) which may require routine maintenance and or adjustments during the exhibition may only be maintained during specified hours. Contact the Fine Art Coordinator for more information.
11. Accepted entries with special or complex installation needs must be accompanied by detailed installation procedures and diagrams. In certain cases, we may ask the artist to be present for installation.
12. The California State Fair reserves the right to photographically and electronically document any artwork accepted in the exhibition for use in catalogs, publications, publicity materials or for purposes deemed helpful to California State Fair promotion.
13. Exhibitors will be asked to write **a statement of 125 words or less about their accepted artwork(s)**. These artist's statements are to be submitted as a word document, using Ariel 12pt font. All submission must be in a Microsoft Word document. The statements will be displayed in a binder located at the Art Docent Information Desk. may be edited for length or continuity. Exhibitors will also be asked to submit a one page Artist's Resume. Artist's Resumes will be made available to the public during the exhibition and exhibitors are reminded to not include private or confidential information in this document. Artist's Statement and Resume may be emailed per instructions sent to exhibitors. **Artist's Statements and Resumes are due by June 22, 2019**. Submission of these documents is optional, but artists are encouraged to provide them. No hard copy will be accepted; all submissions must be emailed.
14. All artists whose artwork is exhibited will be invited to the awards ceremony (date and time to be announced). Award trophies and ribbons as described on page 11 will be presented at this event. If the artist is not present, any award won may be picked up along with the artwork, or if the item is not picked up, we will mail the award to the artist. Checks for award premiums will be mailed separately in early Fall.

Display Requirements: Two-Dimensional Artworks

All two-dimensional works in all divisions must be framed and/or ready to hang with heavy picture wire. Saw-tooth hangers, uniframes, and frames with a sharp glass edge will not be accepted.

15. Wet paintings will not be displayed.
16. California Fine Art will not furnish or protect any artworks with glass, plastic or hanging apparatus. If appropriate for the medium used, framing

may include glass; however, if shipping this artwork, glass must be replaced with Plexiglas or another acrylic sheet product.

17. Unless printed on gallery-wrap canvas or metal, photographs in Division 415 - Digital Artwork must be framed.

Three-dimensional artworks designed to hang

18. Cannot exceed 5 lbs total weight and must be equipped with heavy duty hanging wire or in a manner appropriate for the particular artwork.
19. Wall hanging fiber and textile entries must be equipped for hanging by securely attaching a four (4) inch wide sleeve across the entire top back edge of the artwork for display purposes. For display uniformity, California Fine Art will provide dowels for hanging all textile pieces.

Three-dimensional artworks designed to be free-standing

20. Must be based, when necessary, for structural support and proper presentation.
21. For display uniformity, California Fine Art will furnish pedestals for small free-standing three dimensional works. If a base or pedestal is an integral part of the artwork, please contact the Fine Art Coordinator for requirements.
22. With few exceptions, California Fine Art will not provide glass, plastic cases or other apparatus to protect the artwork. In the case of fragile artworks, California Fine Art may ask the artist to provide such protection for secure display.

The method of display and the placement of exhibited artworks is per the expertise and discretion of the California State Fair staff.

Disclaimers

1. Although care and diligence will be exercised in the course of receiving and handling entries, the California State Fair is not responsible for any technical malfunctions, failures, omission, interruption or defect of any entries. Nor are we responsible for entries that are not received in accordance with deadline rules due to a computer or electronic malfunction or other reason.
2. Insurance is the responsibility of the exhibitor. The California State Fair does not ensure exhibits and is not responsible for any loss, damage or theft of entries.

3. Photographs are taken in the California Fine Art Building during the Fair. These photographs are used for publicity purposes and archives. By submitting your entry form, exhibitors are giving the California State Fair permission to use such photographs at their discretion without compensation to, or prior approval from, the artist.
4. When entering online, the competitor acknowledges that they have read and understood these rules and the 2019 General Rules (included in this Guide) updates to the General Rules made after publication of this guide will be available on the Competitions page of our website. Failure to follow rules and requirements may result in disqualification without the return of entry fee(s).

DELIVERY, SHIPPING, & PICK UP

Hand Delivery & Pick-up:

1. Hand delivered, accepted artworks may be delivered to Cal Expo Fairgrounds, **Expo Center, Building 7** (see map) only between the hours of **9:00 a.m.** and **5:00 p.m.** on Saturday, **June 27, 2020.**

Directions to Expo Center, Building 7, California Fine Art & Photography Exhibit Hall: enter California State Fairgrounds via **Gate 12 at Ethan Ave & Hurley Way** and follow the access road past Raging Waters, and **turn right** after **Raging Waters**. Expo Center is the set of tall concrete buildings directly ahead.

2. Artists are responsible for the unloading and loading of artwork. If the artwork is of a size and bulk requiring special equipment for unloading, please contact the California Fine Art Coordinator.
3. Pick-up all unsold, hand-delivered entries from Expo Center Building 7 only between the hours of 9:00 am and 5:00 p.m. on Saturday, August 8, 2020. Must have a photo ID.
4. If someone other than the artist will be picking up an entry, they must bring a signed letter of authorization from the artist. No exceptions.
5. **Artwork not picked up** by artist will be **donated or recycled after August 15, 2020.**

Shipped Entries

6. Shipped accepted entries must arrive at the California State Fairgrounds no later than Friday, June 27, 2020.

Mail or ship **“Accepted”** entries to:

California State Fair
California Fine Art Competition
Administration Building
1600 Exposition Blvd.
Sacramento, CA 95815

7. All shipped artworks must be sent prepaid and accompanied by our Shipping Form which requires information regarding return shipping. **Return shipping must be prepaid or include a shipping account via UPS or Fed Ex and include required paperwork with shipped artwork. No stamps will be accepted.**
8. Insurance is the responsibility of the artist. Although the State Fair does its due diligence to pack and ship your items back to you carefully, we suggest that you purchase insurance for your items. This need to be pre-purchased along with the shipping labels that you send in with your items and shipping form.
9. The California State Fair reserves the right to return shipped entries by any carrier available. The fair may, at its discretion, return entries via the original carrier.
10. Shipping containers must be reusable for return shipping purposes. The Fair will not provide any additional packing material. Please label all packing material with artist’s name (i.e., bubble-wrap, plastic wrap, etc.)
11. Artist must indicate on the **outside** of the shipping crate/package the **artist’s name** and **the class** in which the artwork is entered.
12. Written instructions for unpacking and repacking must be included on the outside and/or inside of the container. If enclosed inside, instructions should be the first thing seen when the container is opened.
13. Enclosed documents such as assembly or display instructions, Artist’s Statement and/or Resume should be in an envelope and clearly marked as “documents.”
14. Shipped entries must be packed and crated securely. Framed two-dimensional artworks must have Plexiglass instead of glass if being shipped. Artists assume all responsibility for the condition of their entry and the quality of the shipping containers.

15. Shipped or mailed entries will be packed and returned after August 10, 2020.
16. Undeliverable shipped or mailed artworks returned to the California State Fair will be donated to charity on or after August 15, 2020.

JUDGING

There will be two rounds of judging.

FIRST ROUND

1. First round is online, and entries will be juried from digital images for acceptance into the exhibition and invited to be delivered after June 12, 2020. Results of this judging will be published on our website, **CAStateFair.org/Competition** and clicked on the **California Fine Art** icon on the competitions page.

A list of accepted artworks arranged by Division and Class and listing the title the entry # or WEN# and artist's name will be posted to the Fine Art section on the Competitions page of our website. Results will be posted within five (5) working days after the judging. Results will not be given over the phone.

2. CD's and/or DVDs containing video or other digital artworks will not be returned.

SECOND ROUND

3. The **second round** of judging will be a closed to the public, onsite judging process where entries can be juried by the actual view. A confirmation judging and award distribution by jurors will be held at this time jurors may, at their discretion, **disqualify any artwork that does not meet the expectations set** by the entered **digital image(s)** or **the display requirements**.

It is the artist's responsibility to deliver in the artwork that matches the digital image that is selected. If the artwork doesn't match the digital image of the first round or the title of the artwork gets changed, it will be automatically disqualified. Reproductions, Giclee, or other prints of artworks entered as paintings will be disqualified. Artwork substituted in lieu of the entered artwork will be disqualified. Wet paintings will be disqualified.

Only those artworks accepted by the jury will be exhibited and only the artworks accepted will be eligible for awards. Approximately 180 artworks will be accepted. A list of accepted artworks in each Division and Class will be posted to our website, CAStateFair.org/Competition. Once artworks accepted into the show may not be removed from the exhibition by the artist or purchaser until after the close of the California State Fair and the exhibition.

4. The results of confirmation judging will be published on our website, castatefair.org/fineart/. The award won will be posted to the California Fine Art section on the Competitions page of our website. Results will be posted online on the opening day of the 2020 California State Fair (July 17, 2020). Results will not be given over the phone.
5. The decisions of the jurors are final. In the tradition of juried art shows, no scorecards or jurors comments will be delivered to the competitors.

Jury

Jurors are invited to participate on the basis of their qualifications. Preferred jurors are Museum Curators, University or College Art Professors, Gallery Directors, and/or artists recognized as experts in their field or medium. The 2020 jury will be announced on our website: CAStateFair.org.

AWARDS

The California State Fair will award the following:

BEST IN SHOW AWARD

One of the Juror's Awards recipients will be chosen by a majority of the jurors as Best in Show.

Award State Fair Rosette

JUROR'S AWARDS

Five (4) Juror's Awards will be selected.

Award (each)..... \$700 plus Golden Bear Award & State Fair Rosette

AWARD OF EXCELLENCE

A maximum of seventeen (17) Awards of Excellence may be awarded at the discretion of the jurors.

Award (each)..... \$250 and State Fair Rosette

AWARD OF MERIT

A maximum of (100) Awards of Merit may be awarded at the discretion of the jurors.

Award (each)..... \$50 and State Fair Rosette

CATS & DOGS SPECIAL AWARDS

Any artworks featuring cats and dogs will be eligible for this special award. The Fine Arts judges will place 1st through 3rd overall of all artworks that apply to this special category.

First Place..... \$50 and State Fair Rosette

Second Place \$30 and State Fair Rosette

Third Place \$20 and State Fair Rosette

SPECIAL AWARDS

Generous donors, organizations, individuals, and businesses may offer cash or merchandise awards to outstanding artworks in specific media or other categories as designated. The following Awards have been confirmed for 2020 (as of 7/22/2020). Others may be added prior to the judging.

Awards by Kay, Inc. of Sacramento, awards \$100 to outstanding work in watercolor. Founded by Kay and Ray Boron in 1958, Awards by Kay now includes three generations of the Boron Family. Artist Kay Boron was also one of the founders of the Sacramento Fine Arts Center and a dedicated supporter of the arts. This award is given in her honor. Visit their web site: <http://www.awardsbykay.com>.

Gamblin Artists Colors, Inc. Award for Plein Air - Gamblin, whose mission is to lead oil painting and printmaking into the future, awards a \$150 gift package to an outstanding painting exhibited in the 2020 California State Fair.

Inside Publications of Sacramento publishes original artworks on the cover of each of their monthly editions. This truly local publication reaches over 100,000 people each month. The publisher of Inside Publications has personally chosen artwork from the California Fine Art show to feature on edition covers since 2007.

Northern California Arts, a non-profit organization, founded in 1939, awards \$100 to outstanding work in any medium. The mission of NCA is to promote appreciation of and participation in the visual arts and art education in the community. With approximately 200 members, NCA remains one of the largest and most dynamic art organizations in the Sacramento region. NCA celebrates over 75 years of arts and artists.

Art Sales Information

Artists will have the option of placing their artwork for sale. When setting the price of their artwork, artists are advised to take into consideration the commission, the cost of framing and/or otherwise preparing their artwork for display, as well as the cost of delivery of their artwork. A commission of 30% of the purchase price on each artwork sold will be retained. Sales tax will be charged to these sales, the fair will not ship artwork to buyers, and purchased artwork must be picked up by the buyer. A portion of the commission will be donated to the Friends of the California State Fair Scholarship Fund. Sales prices are submitted with the entry of each piece of artwork. No new sales prices will be accepted after artwork drop off (June 27, 2020).

DIVISIONS & CLASSES

Entry Fee: \$20.00 per entry.

Division 400 - 2D Artworks/Brushworks

Class 1 - Oil Paintings

Class 2 - Acrylic Paintings

Class 3 - Watercolors

Class 4 - Plein Air Paintings

Class 5 - Mixed Media Paintings

Notes & Special Rules for Division 400:

- a. Entries in this division should not exceed 4" in depth.
- b. Class 3 includes brushed ink artworks.
- c. Entries in Class 4 can be in any media but must have been 90% completed in plein air.

Division 405 - 2D Artworks/NonPainting

Class 1 - Drawing

Class 2 - Pastels

Class 3 - Color Pencil

Class 4 - Printmaking

Class 5 - Collage

Class 6 - Mixed Media 2D

Notes & Special Rules for Division 405:

- a. Entries in this division should not exceed 4" in depth.
- b. Class 2 includes soft pastels and oil pastels.

- c. Entries in Class 4 must be prints made from artist's hand-made or manipulated plate, stone or screen and be signed and numbered as a limited edition.
- d. Entries in Class 6 must incorporate two or more mediums.

Division 410 - 3D Artworks

Class 1 - Sculpture, single Medium

Class 2 - Sculpture, Mixed Media

Class 3 - Assemblage

Class 4 - Recycle

Class 5 - Other 3D Artworks

Notes and Special Rules for Division 410:

- a. Artworks primarily composed of a single material are considered to be "single medium" unless additional material constitutes more than an accent or embellishment.
- b. Entries in Class 4 must be 85% recycled materials.
- c. Sets shall be considered as one entry.
- d. Entries in Class 5 include, but are not limited to, bas-relief carving, fiber art, ceramics, glass, and textiles.

Division 415 - Digital Artwork

Class 1 - Digital Art

Notes & Special Rules for Division 415:

- a. Digital Photography that has not been profoundly altered using software should be entered in the Photography Competition. **This division is for artworks created entirely using computer hardware and software, or for digital photographs or scanned images that have been profoundly manipulated and/or combined using computer software.**
- b. If accepted, artworks in Class 1 must be displayed as prints or other physical depiction of the artwork and are subject to the rules for the display of 2-dimensional artworks. Artwork must be framed unless printed on "gallery wrapped" canvas or on metal.

PLEIN AIR

Division 460 - Special Contest: Plein Air

Class 1: Adult

Class 1: Young Adult

Notes & Special Rules for Division 460:

- a. Class 1- California residents who have reached 18 years of age as of January 1, 2020.
- b. Class 2 - California residents who have reached 13 years of age as of January 1, 2020 and who have not reached 18 years of age as of January 1, 2020.

Entry Deadline: Wednesday, July 8, 2020 at 6:00 PM

Entry Fee - \$10 per painting entered (maximum of three)

Paint-out days - Saturday, July 25 and Sunday, July 26, 2020

We will provide one California State Fair gate pass and one parking pass per contestant for **each paint-out day per adult**, and 2 gate passes and one parking pass per contestant for **each paint-out day** per minor.

AWARDS:

1st Place	\$125 and ribbon
2nd Place.....	\$75 and ribbon
3rd Place.....	\$50 and ribbon

Any additional awards of merchandise gift certificates donated by businesses or associations will be announced. Ribbons will be presented immediately after the judging is finalized.

Premium checks will be mailed after the close of fair.

Rules

1. Participants in the contest must register online and pay entry fee with visa or master card for one, two or three paintings by 6:00 pm, Wednesday, July 8, 2020. No late registration will be allowed.
2. Participants will receive an e-mail notification that their registration has been processed. The email will also contain any updated information about entering the fairgrounds to check in.

3. **CHECK IN:** Participants must come to the Cal Expo Administration Building between the hours of 8:00 am and 10:00 am on Saturday, July 25 or Sunday, July 26, 2020, to check in and have their painting surface certified with date and time. Enter Cal Expo at Gate C (see map).
4. Participant must present to the Entry Office a blank painting surface (canvas, panel, board, or paper) for each entry. The back of the painting surface will be marked by the Entry Office staff or volunteers with a code to assure that all paintings in the exhibit are done in their entirety on the official paint-out days. **Canvas, panel, board or paper that is not 100% blank will not be certified.**
5. **Size limitation:** Finished (unframed) size may not exceed 18" x 24".
6. Parking and admission credentials for paint out days will be mailed to registered participants. Participants will be issued credentials based on the number of entries. Those entering only one painting will be issued one parking pass and one admission ticket. Those entering two or three paintings will be issued (max) two parking passes and two admissions tickets.
7. Paintings must be completed and turned in on the same day they are painted at the fairgrounds. Completed paintings are to be turned in at the California Fine Art exhibit building, Building 7, Expo Center, between the hours of 10:00 am and 9:00 pm on Saturday, July 25, 2020, and between the hours of 10:00 am and 4:00 pm on Sunday, July 26, 2020. Only paintings with the certification code for that day on the back will be accepted into the exhibit; all others will be disqualified.
8. Completed paintings that are turned in may be offered for sale. When turning in paintings, participants will be asked to fill out paperwork with the painting's Title, medium, and sale price.
9. **SALES:** Participants may not offer their artwork for sale except in the Plein Air Special Exhibit in Expo Center Building 7. The CA State Fair Box Office will conduct sales transactions and payment to the artist will be by mail to the artist after the close of the fair. For more details, please refer to "Art Sale Information" on page 19.
10. Insurance is the responsibility of the participant. Participants are responsible for their tools, materials, supplies and other personal property. Exhibits are not insured.

Judging

The Plein Air at the Fair Special Contest will be judged by an independent expert at 6:00 p.m. on Sunday, July 26, 2020. Paintings that have not been turned in by the 4:00 pm deadline on that date will not be judged. The decision of the judge is final. Winners will be announced and awards distributed immediately after the judging results are validated. A report of the winning paintings will be posted to the California State Fair website CAStateFair.org as soon as we we can do so.

To Enter the Special Contest

Enter online prior to 6:00 pm, Wednesday, July 8, 2020. When entering, use “TBD1”, “TBD2”, “TBD3” as the titles. List the medium you will use for each. Check the “For Sale” box and enter \$100 as the default price. Actual titles, medium, and sale price will be recorded when the paintings are turned in.



2020 GENERAL RULES

California Exposition & State Fair

General Rules are subject to any action that may cause revision or curtailment at any time before each competition or judging. Upon submission of online entry and signature on detailed receipt if applicable, the exhibitor acknowledges that they have read and understood these rules and all others of the competition in which they enter and are further responsible for viewing, reading and understanding all revisions or curtailments on the State Fair's website before the competition. Exhibitors may request an additional copy of the most current rules by contacting the entry office:

email: **entryoffice@calexpo.com.**

Exhibitors Entry Responsibilities

STILL EXHIBITS

1. All submissions and information necessary to determine that the exhibit is eligible must be submitted online, uploaded if necessary, and entry fees paid by Visa or MasterCard by the entry deadline.

It shall be the responsibility of the exhibitors to correct all deficiencies in connection with entries or exhibiting which are required of them by the rules printed in the Competition Guide.

Entries will not be judged if deficiencies have not been cleared or fees paid.

LIVESTOCK & AG MECHANICS

2. All signatures and information necessary to determine that the exhibit is eligible must be submitted online for Junior Livestock, Open Livestock, Ag Mechanics, Best of Show and Small Animals.

All Livestock, Small Animal, Best of Show and Ag Mechanics exhibitors will be required to submit a Detailed Receipt with all required signatures within one week of the entry deadline.

It shall be the responsibility of the exhibitor to correct all deficiencies in connection with entries or exhibiting which are required of them by the rules printed in the Competition Guide.

A deficiency penalty of \$20 per entry must be paid for any deficiency or fees which have not been paid by June 25 for Livestock and Small Animals, this includes not returning the detailed receipt by the due date.

Entries will not be judged if the detailed receipt is not received.

This rule shall apply to all equine shows with a requirement for their fees, forms, and signatures being submitted by the entry deadline date within each equine section of any competition guide.

ENTRY LIMIT

3. The State Fair management shall reserve the right to limit entries displayed and/or exhibited to facilities available and may limit the number of entries made by an exhibitor.

Entries may also be limited or not displayed based on size, content, subject material, or for any reason determined not in the best interest of the California State Fair.

Any return of entries under this rule will be done at the sole discretion of the State Fair management.

OWNERSHIP OF ENTRY

4. Unless specific provisions are otherwise made in the Competition Guide (printed or on the web), exhibitors must be the bonafide owner of their entries.

The management may demand such proof of ownership as it deems necessary in each case.

EXHIBITOR LIABILITY

5. Each exhibitor will be solely responsible for any consequential or other loss, injury or damage done to, or occasioned by, or arising from, any animal or article exhibited by him/her.

Exhibitor agrees to indemnify, and hold harmless, the State of California, California Exposition & State Fair and all officers, agents, and employees thereof from all claims, demands, damages, costs, expenses, or liability costs suits or actions of every name, kind and description, brought forth from or on account of, injuries to death of any person including but not limited to workers, and the public, or damage to property resulting from the performance of the exhibitor or entries.

Neither party shall request apportionment of liability by a jury.

NO GUARANTEE

6. The State Fair cannot guarantee that all exhibition requirements of an entry can be provided (i.e., electricity, a showcase, a pedestal, special lighting, special location, total space requirements, water source, computer services, or any other special requirements).

DIVISION/CLASS CANCELLATION

7. The State Fair management reserves the right to return entries and cancel any division or class in which, in its judgment, the entries are insufficient to secure adequate competition.

ENTRY ERRORS

8. State Fair management is not responsible for finding errors in entries.
9. Exhibitors are responsible for any and all errors which were submitted online.
10. No exhibitor shall be entitled to an award which has been disallowed as the result of his own error.
11. The State Fair management shall withhold the payment of awards for exhibits that are ineligible and may recover awards that have been paid for ineligible entries that are disclosed during post audits of State Fair records. However, exhibitors with a cause are entitled to question the validity of any disallowance. Such exhibitors should inform the State Fair management immediately, in writing, giving their name, address, complete description of the entry and the reason for requesting reconsideration. Requests will not be considered later than ninety (90) days after receiving notice of disallowance.

SUBSTITUTION

12. Substitutions may be made in still exhibits only in the same division of the original entry of the original exhibitor, and may be made only if completed by the entry delivery date.
13. Substitutions for livestock must be in the same division of the original entry by the original exhibitor.
14. Substitutions must be made at the time of check-in to avoid penalty.
15. Fees may apply for substitutions in excess of two per division.

16. The State Fair or the judge may disqualify or transfer to the correct class any entry which is not a true representative of the division or class in which it is entered.

PREVIOUSLY ENTERED ENTRY

17. Any non-animal (still exhibit) entry that has been exhibited at a previous California State Fair is not eligible for entry in the 2020 California State Fair.

VERIFICATION

18. Online submissions will receive a confirmation once entries are submitted.

RESPONSIBILITY

19. The State Fair shall not be responsible for exhibits remaining on the fairgrounds after designated release times.
20. All Still Exhibits or display elements remaining on the fairgrounds after designated release time will be treated as abandoned property and will be disposed of on or before September 1 of the same year.

REMOVAL OF ENTRIES

21. An exhibitor may not remove his or her entry from the California State Fair once it has been accepted.
22. **Judged or Accepted:** Entries must be on exhibit at the official opening of the State Fair or at any other time specified in the Competition Guide and shall not be removed from the fairgrounds prior to the release date printed in the guide, except (at the discretion of the State Fair management) in cases of positive evidence of sickness, accident and/or death, or other circumstances that are in the best interests of the State Fair.

DISHONORED CHECKS

23. A penalty of \$25.00 per dishonored check must be paid if a check for payment of entry fees or other applicable fees is refused by the bank. Only cash, certified check or money orders are acceptable for the penalty payment.

ENTRY FEES

24. Entry Fees are NON-REFUNDABLE.

LATE ENTRIES

25. Late Entries may be accepted at the sole discretion of the California State Fair under the following conditions:
- a. Late Entries will **NOT be accepted** for **California Crafts, Fine Art, Student Showcase, Photography, California Baking & Canning and Youth Baking & Canning.**
 - b. If the department accepts late entries, the completed entry form(s) and other completed required forms, signatures and full payment for all required fees must arrive at the California State Fair Entry Office (by Certified Mail, Hand Delivery or Electronically) no later than five calendar days after the official entry deadline requirement of the competition.

For example, if the Official Entry Deadline is June 13, the last day and time a late entry may be eligible would be June 18 at 4:00 pm. If late entries arrive after 4:00 pm on that fifth day, they will NOT be considered.
 - c. Open **Livestock Late Entries** will be accepted until July 3, 2020, with **an additional \$100 per entry.** Payment must be received no later than 5 pm on July 3, 2020.
 - d. All late entries must be accompanied with the entry fee as listed within the program in addition to a **late fee of \$20 per entry for all Junior Livestock, Open Livestock and Best of Show Horse** entries and **a late fee of \$10 per entry for non-livestock competitions and small animals** (Fur and Feathers and dogs). Acceptable forms of payment are Visa, Master Card, check or money order.
 - e. No entries will be accepted beyond the capacity of the facility.
 - f. All other entry requirements as well as any rules, regulations and schedules shall apply.
 - g. No entry is a guarantee of acceptance and it is the exhibitor's responsibility to confirm that the State Fair has accepted any and all entries.
 - h. The California State Fair expressly reserves the right to reject any and all entry forms for any reason whatsoever.

DESIGN

26. The California State Fair assumes total design control over the presentation of the exhibits.
27. Entries designed for hanging and not so equipped will be hung in a manner deemed appropriate by the State Fair.

28. No exhibit changes will be made once the entries have been displayed.
29. Once an entry has been received by the State Fair, no further handling of entry by exhibitor shall be permitted.
30. Relocation and final placement shall be accomplished by State Fair personnel.
31. Entries requiring assembly/disassembly must include detailed instructions and sketches for assembly/disassembly.
32. Instructions should indicate lifting points, unsecured parts and any other information required for such handling. Where necessary bank pins will be utilized to attach exhibits for display.

JUNIORS ENTERING SENIOR DEPARTMENT

33. All divisions and classes within Junior Departments are intended for Juniors exclusively. Entry into the Junior Department is regulated by age and youth organization requirements as outlined in this competition guide. In no case may a person, group or organization outside of these age requirements (younger or older) be allowed to enter and compete in the Junior department.
34. However, Juniors may elect to enter, exhibit and compete (animal or non-animal) in the Senior Department when the rules of that department, division or class allow for such. Such entries shall be restricted to:
 - a. A class for the exhibit that is not provided in the Junior Department.
 - b. Junior Livestock Exhibitors that officially enter and show in the Junior Livestock Show are eligible to compete in the Open Show as long as the same exhibit/animal is entered and shown in the Junior Show and the same exhibit/animal is entered and meets all Open Division entry deadlines and guidelines.
 - c. Open classes or divisions that allows for the participation of Juniors due to the open competition being a specialty, feature, regional or national show sanctioned by the State Fair and/or recognized organization. In this case, the Junior exhibitor must also enter and compete (with the same exhibit) in the current year's Junior department, division, class offered for the exhibit. This provision must be printed specifically within the rules of the feature show within this guide.
35. Anyone under the age of 18 who meets the California State Fair age requirements and is planning to exhibit in a Senior department must have their parent or legal guardian sign their detailed receipt.

36. If the exhibitor is required to be on the fairgrounds, the Junior must be supervised by their parent or legal guardian while at the State Fair.
37. Exhibit animals owned in partnership between Seniors and Juniors shall not affect Junior's eligibility when the Senior partner is the exhibitor.

STATE FAIR EMPLOYEE PARTICIPATION

38. No employee of the State Fair will be permitted to enter an exhibit for competition. No person shall be an exhibitor or sign an entry form as an agent in any Division or Department in which the exhibitor is a department head, judge, or paid employee.

Disqualification

ENTRY DISQUALIFICATIONS/TRANSFERS

39. A complete exhibit eligible in more than one Division and/or Class shall be entered and judged only in the Division and/or Class for which it best qualifies.
40. The State Fair or the judge may disqualify or transfer to the correct Class (at his/her discretion) any exhibit which is not a true representative of the Division or Class in which it is entered.

It is not, however, the responsibility of the State Fair or judges to transfer an entry to the correct Division and/or Class.

DISQUALIFICATIONS

41. The State Fair management shall reserve the right to vacate, declare ineligible for competition, and/or order the removal of any entry which is not in the best interest of the State Fair, is unsightly, unhealthy, injured, lame, unsound, endangers public safety, violates the State Fair's Animal Welfare Policies, or has been entered in violation of these rules and regulations.
42. In the event, an entry or an exhibitor is disqualified for any rule or policy violation (including but not limited to practices or procedures that are unethical, those in violation of the State Fair's Residue Avoidance Program, DNA Testing Program and those not adhering to the State Fair's schedule for the program), any or all of the following actions may take place:
 - a. The entry or exhibitor that is disqualified will be declared ineligible and will not receive awards, premium money and/or any sale proceeds.

Further, the exhibitor shall be responsible for payment of any fees, fines due or costs incurred by the State as a result of disqualification.

- b. The owner/exhibitor and members of his/her immediate family will not be eligible to compete in subsequent California State Fair Programs. The extent and degree of future eligibility shall be determined by State Fair Management.
- c. State Fair Management reserves the right (but does not guarantee) to move entries up in placing after judging has taken place when an award void is created by a disqualification.
 - This process of moving up judged entries shall only take place, however, when it is clear what the judge's placing would have been had the disqualified entry not been in competition.
 - For example, when a Champion is disqualified, the Reserve shall move up and be named the Champion; however, no other changes shall take place below the Reserve Champion. The same shall apply in the case of a class, section or division winner when a 2nd place has been clearly indicated by the judge.
 - If it is not possible to clearly determine a new placing, no change shall take place.
 - When a placing change does take place the entry moving up will receive all the awards, appropriate titles and all premiums of the disqualified entry but will not receive any of the original placing awards or premiums won in the second category. In other words, 2nd place will now receive 1st money and "no" entry will receive 2nd money.

COOPERATION

43. Exhibitors, their immediate family, leaders, advisors and agents thereof, not cooperating with security personnel or any other State Fair officials in all matters of policy, including but not limited to parking, stall/pen/space assignments and appearance, judging and/or animal care will have their entries cancelled and will be ordered to remove their exhibit from the grounds immediately and forfeit all awards, premium monies, and sale proceeds. Failure to adhere to this rule will result in being banned from the State Fair.

PUBLIC DISTURBANCES

44. Exhibitors causing public disturbances, those who are uncooperative and/or unsportsmanlike, those not following good animal welfare practices as determined by management, or those found in violation of rules or in practices unethical or inimical with the State Fair program and/or policies/procedures shall be penalized by forfeiture of premiums awarded, any and all awards, payments of fines and/or damages to State Property, privileges, and/or disqualification at this or subsequent State Fairs as may be deemed appropriate by the State Fair Management and/or the Board of Directors.

Further, if the exhibitor and/or exhibitor's adult supervisor, parent or family member's actions are deemed to be illegal, inhumane or unethical to livestock; the proper authorities will be notified for further investigation by those agencies for possible prosecution and/or civil penalties.

PROBATION

45. Any exhibitor found in violation of any rule may be placed on probation for one year or longer if State Fair management deems appropriate.

Judging

JUDGING

46. The judge(s) shall award first, second or third place, etc., according to merit and if without merit the judge shall make no award under any circumstances. This rule applies whether there are one or more entries in the class.

JUDGE/EXHIBITOR INFORMATION

47. No person shall act as a judge in any Division in which he/she or a member of his/her immediate family is an exhibitor, is in charge of an exhibit or division, in charge of a group of exhibitors, or is a member of a group of exhibitors.

JUDGE/FRATERNIZATION/CRITICISM

48. Judges should avoid unnecessary fraternization with exhibitors. No person shall be allowed, under any circumstances, to interfere with the judge, or judges, during their adjudications, or with the State Fair's staff, or to offer any criticism of any exhibit of another.

Violators of this rule shall be excluded immediately from the judging area and competition and be subject to such additional penalties, including cancellations of awards, as the State Fair management shall consider appropriate.

49. No exhibitor shall receive more than two cash awards in any one class. For this rule only, a husband, wife, and unmarried children (including foster children) under 18 years of age shall be considered as being one exhibitor, except that brothers and/or sisters shall be considered as being separate exhibitors in Junior Department classes.

This rule shall have no bearing on consideration in the placing of entries by judges. Ribbons shall be presented in the order of placing by the judges.

The management shall, however, pay third money to the fourth winner, etc., when the third winner is prohibited from receiving third cash award under the provisions of this rule. (Any entry or exhibit in which one or more members of the family described above has a financial interest shall be included in the limitation of not more than two cash awards per class.)

50. Management reserves the right to combine or to divide classes in a manner it deems necessary in order to assure adequate competition.

In the event of a show change, as a result of this rule, or where classes are established after the close of entries, premiums and awards will be distributed, divided or eliminated in a manner as deemed necessary by State Fair Management.

JUDGE'S DECISION

51. The judge's decision is final.
52. The judge's decision cannot be protested.

CHIEF JUDGE POLICY

53. A Chief Judge will be assigned by the State Fair, for still exhibits only, to mediate in the event there is a conflict during the judging process. All decisions of the Chief Judge shall be final and may not be protested.

PROTESTS

54. **For still exhibits and horse only** - Any protest must be submitted in writing and given to the State Fair's staff member responsible for the Competitive Program in question within 24 hours of the time of the cause of the protest.

Protests must be based on a violation of rules, and you must reference the rule in your protest. The judge's decisions on awards cannot be protested.

No protest shall be considered by the management unless accompanied by a deposit of \$300.00 (Cash, money order or certified check).

The deposit shall be forfeited if the protest is not upheld.

Protests shall be adjudicated by State Fair management.

State Fair management will consult with a member of the California State Fair Board of Directors who shall be designated by the Chairman of the Board.

The decision of State Fair Management shall be final and unappealable. See special livestock rules for protests in the Livestock Program.

55. Undo no circumstances will any entry which has been previously judged be "rejudged" due to the disqualification or removal or another entry.

Awards

SPECIAL AWARDS

56. Special Awards contributed by businesses or individuals are offered in some California State Fair Competitive Programs.

These Special Awards are the obligation of the contributor/donor.

The California State Fair is not responsible for redemption of these awards.

TAX LAWS

57. It is the responsibility of the exhibitor to investigate and adhere to State and Federal tax laws/regulations regarding premiums paid, and awards received.

As an out-of-state payee who earns \$1500 or more, Cal Expo must withhold 7.5% for State taxes.

You may request an exemption or a reduction of this withholding by filling out and submitting the Nonresident Withholding Waiver Request, California Form 588.

PREMIUM AWARDS

58. Awards, ribbons, tags or cards have no value as payment. Premiums are paid only from the records of the judges' sheets.

59. Premium checks will be issued as soon as auditing, drug testing, if applicable, and processing can be completed. If checks are not received by November 15, please phone or write the State Fair.
60. Checks must be **cashed within six months** of the date of issue.
61. Exhibitors have until December 31 of the same year, to claim checks returned to the State Fair. Checks will not be reissued after this date.

Age Requirements

JUNIOR EXHIBITORS MEMBERSHIP AGE AND AFFILIATION REQUIREMENTS

62. Organization affiliation requirements: If a Junior (youth) exhibitor has been a member of a junior organization for 60 days immediately prior to the opening date of the State Fair (July 12, 2020), and their project or entry was produced or conducted at any time during the year of 2020 under the supervision of the organization, the Junior must enter the divisions or classes designated for that organization.

If, however, the project or entry was not produced or conducted under the supervision of the organization, the Junior must enter as an Independent Junior for that project or entry.

Example: If a 4-H member wishes to enter a Market Steer competition and Junior Sheep competition, in a situation where they are only enrolled in a 4-H Beef project, the entry is as follows: Enter 4-H for the Market Steer competition and Independent Junior for the Junior Sheep competition (even though the exhibitor is a 4-H member, the baked goods project was not produced or conducted under the supervision of the organization).

63. Non-designated “Junior” shows or divisions: If a show or division offered is not specified as 4-H or FFA, Junior exhibitors who are enrolled in a 4-H or FFA project relating to that show or division must still enter as members of their respective organizations and follow all applicable rules and regulations of the department.
64. All 4-H exhibitors must be 9 years old by December 31, 2019, and not be older than 19 years old as of December 31, 2019. Exhibitors must also meet age and membership requirements of their organizations when entering as a member of an organization. Exhibitors must also meet the ownership and all other requirements of the competition to be eligible for entry.
65. California Grange: California Grange youth shall be considered Independent Juniors for Livestock, Dairy, Small Animal and Still Exhibits.

INDEPENDENT JUNIOR AND GRANGE AGE REQUIREMENTS

(Rules 66-69 apply to Indoor non-animal Exhibits only.)

66. Independent Junior and Grange exhibitors may enter California State Fair classes and divisions in indoor (Still Exhibit) competitions if they are 5 years old as of January 1, 2020.
67. Independent exhibitors are eligible to compete/exhibit through December 31 of the year in which they turn 18 years of age.
68. Grange exhibitors are eligible to compete/exhibit through December 31 of the year in which they turn 19 years of age. Exhibitors must meet the ownership and all other requirements of the competition to be eligible for entry.
69. Independent Still Exhibit Exhibitors: Persons, who are “not” 4-H, FFA or Grange members may enter the Junior competitions provided they meet age requirements for youth exhibitors in the competition they are entering. These Juniors are considered Independent Juniors and must enter Independent Junior classes or divisions when the classes or divisions are designated as such in the Indoor (Still Exhibits) Competitions.

Exhibitors who enter Independent of an organization must not be older than 18 years old as of January 1, 2020.

FFA AGE REQUIREMENTS

70. The first year of eligibility will be determined by the FFA advisor; however, the exhibitor must have graduated from the 8th grade as of July 1, 2020.

FFA requirements allow exhibitors to enter FFA classes through the year following the year in which they graduate from high school.

INDEPENDENT AND GRANGE ANIMAL EXHIBITORS

71. Persons who are “not” 4-H or FFA members may enter the Junior Live-stock Show provided they meet age requirements for animal exhibitors at the State Fair.

These Independent and Grange exhibitors shall enter 4-H or FFA classes as follows:
 - a. Independent and Grange Junior exhibitors who are 13 years of age or under (as of show day) shall compete in the appropriate 4-H divisions only.

- b. Independent and Grange Junior exhibitors who are 14 years of age (as of show day) or are incoming freshmen in high school shall be placed by State Fair Management in either 4-H or FFA divisions.
- c. Independent and Grange Junior exhibitors are eligible to enter 4-H or FFA Showmanship. Independent Juniors are not eligible for County or Chapter Groups or Outstanding Exhibitor.

MEMBER STANDING AND OWNERSHIP REQUIREMENTS

- 72. Juniors who are members of 4-H, FFA or Grange must be in good standing with their organization and projects entered as such must have been conducted under the supervision of the organization and must be owned by the exhibitor (unless otherwise stated).

ELIGIBILITY QUESTIONS

- 73. Any questions as to the eligibility of an entry shall be determined by the exhibitor's advisor (for 4-H, FFA or Grange), instructor (for Student Showcase) or parent or guardian (for Independent Juniors). Notwithstanding the foregoing, the State Fair shall make the final determination of eligibility in all cases.

4-H AGE REQUIREMENTS

- 74. The levels of membership for 4-H are aged based. Each level is defined as follows:
 - a. **Primary Level:** Must be 5 years old as of December 31, 2019. Primary membership ends when members qualify as junior members. Exhibitors who are under nine years of age on or before December 31, 2019, are not eligible to compete in animal competitions at the California State Fair.
 - b. **Junior, Intermediate & Senior:** Must be 9 years old by December 31, 2019. Exhibitors are eligible to compete/exhibit through December 31 of the year in which they turn 19 years of age.
 - c. **Home Schooled Children:** Age criteria, as listed in 1 and 2, only will apply to homeschooled children. A grade level will not be a consideration. (Exhibitors who are under 9 years of age as of December 31, 2019, are not eligible to compete in animal competitions at the California State Fair.)

INDEPENDENT JUNIOR AND GRANGE AGE REQUIREMENTS

(This rule applies to Animal Exhibitors)

75. Independent Junior and Grange animal exhibitors must be 9 years old as of January 1, 2020, and are eligible to compete through December 31 of the year in which they turn 19 years of age. Independent Juniors and Grange exhibitors shall enter 4-H or FFA animal classes.

NO DUAL AFFILIATION IN COMPETITION

76. Under no circumstances may an exhibitor show the same species or project in more than one Division of the Junior Department.

ADULT SUPERVISION REQUIREMENT

77. All Junior exhibitors, required to be on the State Fairgrounds, must be accompanied and supervised by an adult while on the State Fairgrounds. Instructors, advisors, leaders and other adults in charge of Junior exhibitors shall be responsible for their conduct at all times.

FFA SUPERVISION REQUIREMENTS

78. All FFA exhibitors entered as such must be supervised by their agricultural instructor.

Any deviation from this rule must be taken up with the State Agriculture Education unit representative in charge.

The CATA Curricular Activities Code shall govern the conduct and eligibility of FFA exhibitors and their projects.

UNIFORMS

79. Uniform requirements for Independent youth shall be the same as required for 4-H and FFA members excluding insignia.

The official show uniform for animal exhibitors at the California State Fair will be white pants, trousers or dress and a white blouse or shirt.

80. No exhibit owned by a chapter or club, or conducted, as a joint project by two or more individuals is eligible in the Junior Department unless the division/class specifically states.

FREE SPEECH ACTIVITIES GUIDELINE

81. The California Exposition & State Fair (Cal Expo) hereby finds that these guidelines are intended to set forth in writing Cal Expo's long-standing policy governing the conduct of Cal Expo employees and exhibitors, as well as members of the public, under the First Amendment to the United States Constitution and Article I of the California Constitution, on Cal Expo's grounds.

These guidelines are not intended to enlarge upon nor create any rights guaranteed by existing law nor waive any defense or rights available to Cal Expo, nor do they represent any admission that the facilities of Cal Expo are open as a public forum.

It is the policy of Cal Expo to allow within the parameters set forth herein, reasonable access to its grounds and designated free speech expression zones for demonstrations for free speech activity as allowed by the First Amendment to the United States Constitution and Article I to the California Constitution.

For further information regarding Free Speech Activities at the California Exposition & State Fair please write to:

Chief of Police, California Exposition & State Fair
P.O. Box 15649, Sacramento, CA 95852.

82. Should contractors, associations, clubs or individuals desire to arrange for beverages and food service, all such arrangements must be coordinated through Spectra, the State's Master Food & Beverage Contractor. **No exceptions.**

Contractor shall be responsible for expenses related to these services if any.

Alcoholic beverage service areas/facilities will only be allowed in designated locations.

Only persons 21 years or older will be allowed to consume alcoholic beverages.

Further, no alcoholic beverages may be brought onto the grounds.

These products may only be acquired at Spectra locations on the grounds. Individuals that endanger themselves or others will be reported to authorities.

DEFINITIONS

The following definitions apply to this guide

American System of Judging: Each entry in a class is judged in comparison to the other entries in the class. Entries are placed first, second, third, etc. according to relative merit. There will be no more than one first, second, third, etc. per class.

Danish System of Judging: Each entry in a class is judged on its own merit. Entries are placed first, second, third, etc., depending on points received based on the score card. There may be more than one first, second, third, etc. per class.

Senior Departments: California Fine Art, California Handcrafts, California Fiber Crafts, California Baking & Canning, Student Showcase, Photography, Commercial Wine, Commercial Craft Brew, Home Brew, California Cheese, California Olive Oil, Open Livestock by species and Open Small Animals by species.

Junior Departments: Youth Arts, California Youth Baking & Canning, Student Showcase, Photography Junior Livestock by species and Junior Small Animals by species.

Senior/Open Exhibitor: An exhibitor who is no longer eligible to be a Junior Exhibitor or enter a Junior Department.

Junior Exhibitor: An exhibitor who is a member of 4-H, FFA, Grange, or an Independent Youth Exhibitor who meets the requirements of Independent Junior divisions offered. See the specific show and General Rules for exceptions to this definition.

Entry Office: The California State Fair Entry Office is located at 1600 Exposition Blvd., Sacramento. Contact may be made by phone, mail, email or personal contact. Questions regarding competitions may also be directed to the Entry Office. (916) 263-3149 - entryoffice@calexpo.com.

Still Exhibits: All competitive exhibits which are typically indoor and not involving animals, such as art, quilts, foods, crafts, sewing, metalwork, jewelry, graphics, drafting, sciences, etc.

Livestock & Small Animals: All competitive exhibits which animals are the entry; such as beef, sheep, swine, dairy cattle, goats, llamas, cavies, rabbits, poultry, dogs, etc.

Online Entry: Commitment to enter and abide by rules.

Detailed Receipt: An official form used in submitting an entry/exhibit in the California State Fair. The Detailed Receipt is only required for Open and Junior Livestock, Fur & Feathers, Best of Show and Ag Mechanic exhibitors.

Entry Fees: A fee charged to enter a competition. All entry fees must be paid online when entries are submitted.

Entry/Exhibit: Terms used to define the item entered in the competition or contest.

Entrant/Exhibitor: Terms used to define the person entering the competition.

Premium: A cash award is given to winners of the competition.

Department: Competition you wish to enter, i.e., California Fiber Crafts, California Handcrafts Fine Art, Youth Arts, etc. which is comprised of similar shows.

Shows: Generalized sections of the competition.

Division: Categories within a show.

Class: Specific categories within a division.

Competition Guide: a printed or electronic (web) book, prospectus, or flyer which contains information for entry into the California State Fair competitions. Competition Guides can be a printed document or as an electronic document found on the California Exposition & State Fair website CAStateFair.org.

Bonafide Ownership of Exhibit - ownership is the state or fact of exclusive rights and control over property considered an entry or exhibit. This definition includes livestock, small animals, and horses although not limited to that type of property. Objects/products created or produced are also included as well as intellectual property. Proof of such ownership may be required by management.