

FIBER CRAFTS

2024 COMPETITION GUIDE


It's your moment to shine!
Enter today.

For more than 170 years the California State Fair has been a constant showcase of the talents and achievements of the people of California. Entering into the California State Fair's 2024 Competitive Exhibits Program allows you the opportunity to showcase your abilities, and revel in your accomplishments! The 2023 annual State Fair had competitive entries from all 58 counties in California.

The California State Fair's friendly competitions are designed to acknowledge the best of the Golden State. Our Competitive Programs inspire talented Californians, as well as highlight the latest advances in technology, agriculture, and industry.

More than 750,000 visitors are expected at the State Fair this summer. Your work is an integral part of the State's celebration, and we look forward to seeing your talents on display during the annual State Fair from July 12-28. We encourage you to enter today and begin making lasting memories for yourself, and for the hundreds of thousands of State Fair patrons!

Sincerely,



Tom Martinez

Chief Executive Officer

GOVERNOR

Gavin Newsom

CALIFORNIA STATE FAIR BOARD OF DIRECTORS

Chair, Willie Pelote, Sacramento

Vice Chair, Kim Craig, Sacramento

Arturo Barajas, Sacramento

Sonney Chong, Sacramento

Rina V. Dimare, Clarksburg

Nick Hardeman, Sacramento

David Mallel, Calabasas

Che Salinas, Sacramento

Brian May, Sacramento

EX-OFFICIO MEMBERS

Senator Angelique Ashby

Assembly Member Kevin McCarty

CHIEF EXECUTIVE OFFICER

Tom Martinez

EXPO EVENTS ACCOUNT MANAGER

Sandi Hurtgen Montiero



OFFICE OF THE GOVERNOR

2024 California Fair Season

Welcome to the 2024 California fair season!

California fairgrounds continue to play a vital role in our state. As we enter a new year, and prepare for the new fair season, there is so much to be excited about. As a California fair exhibitor, you have a key part to play in teaching the public about the history of agriculture and its importance for the Golden State. Whether you are a new or a seasoned exhibitor, this is a unique opportunity to engage with members of your community, form a connection with California's farmers and ranchers, and attract future generations of agricultural leaders.

Annual fairs in California provide an invaluable family experience and proudly display our state's vast diversity of cultures and traditions, all while operating as economic engines and creating jobs within their communities. When fairgrounds are not hosting their annual fairs and other events, they serve their communities as resilience centers. During various floods, storms, and wildfires last year, fairgrounds across the state were activated by their local Office of Emergency Services to serve as evacuation centers for people, pets, and livestock.

Time and time again, fairgrounds demonstrate their importance to our state, and so much of this would not be possible without the good work of our dedicated fair exhibitors. Thank you for your advocacy and commitment to our state and the agricultural community. We look forward to another successful year in 2024!

Sincerely,

Gavin Newsom
Governor of California

GOVERNOR GAVIN NEWSOM • SACRAMENTO, CA 95814 • (916) 445-2841



CALIFORNIA DEPARTMENT OF
FOOD & AGRICULTURE

Karen Ross, Secretary

December 20, 2023

Thank you all for your efforts in showcasing California's bountiful agriculture!

California is very fortunate to have some of the richest agricultural resources in the world and your exhibits play a vital role in presenting this to your communities and the public. Each fair has a unique, local agriculture flavor that brings people together to celebrate the tradition and innovation of our farmers and ranchers.

In addition to helping promote California's agriculture, the annual fair events also educate the general public on new technology that improves agriculture's effect on the environment, stewardship of water and natural resources, and practices that help preserve farmland for future generations.

When fairgrounds are not hosting the county fair, they are also used for quinceaneras, weddings, funerals, and many other community events. In times of need, fairgrounds are amongst the first to open their doors and be used as resiliency centers to serve their communities as cooling centers, evacuation shelters, first responders, food hubs, and workforce development. Fairgrounds are equipped with kitchens, sanitation facilities, and provide a safe space for sheltering people, pets, and livestock.

Your support of California fairgrounds and the annual fair is extremely important to the success of current and future generations and I look forward to hearing about the great success of the 2024 season.

Yours truly,

Karen Ross
Secretary



TABLE OF CONTENTS

Important Information to Know	7
Contact	7
Entry Dates.....	7
Why Enter the Competition?	7
Competition Overview	8
Who Can Enter & Entry Fee.....	8
Entry Deadline.....	8
How To Enter	8
Photographing Your Entry.....	10
Rules & Requirements	11
Entries.....	11
Display of Accepted Entries.....	11
Disclaimers	12
Delivery, Shipping, & Pick-up	13
Hand Delivery & Pick-up.....	13
Show Selection Notification.....	13
Shipped Entries.....	14
Judging	14
Awards	15
Needle & Fiber Arts Awards	15
Quilt Department Awards.....	15
Special Contest Department Awards.....	15
Almost Edible	15
Art Sales Information.....	16
Divisions & Classes: Needle & Fiber Arts	16
Division 153: Basketry	16
Division 155: Crochet.....	17
Division 157: Embroidery (Counted Techniques).....	17
Division 158: Embroidery (Non-Counted).....	17
Division 159: Handspun Yarn.....	18
Division 160: Knitting	18
Division 163: Needlepoint.....	18
Division 165: Other Fiber Art	19
Division 167: Rugs.....	19
Division 170: Wearing & Designer Apparel.....	19
Needle & Fiber Arts Judging Criteria.....	20
Needle & Fiber Art Sponsored Awards	20

Divisions & Classes: Quilts	21
Division 191: Applique Quilts	21
Division 192: Art Quilts	21
Division 196: Miniature Quilts.....	21
Division 197: Other Technique Quilts	22
Division 198: Pieced Quilts.....	22
Division 199: Modern Quilts.....	22
Quilt Judging Criteria	22
Quilts Sponsored Awards	23
Definitions.....	23
Special Rules.....	24
Department Crafts Special Contests	25
Division 223: Almost Edible.....	25
2024 General Rules	26
Exhibitors Entry Responsibilities.....	26
Still Exhibits.....	26
Livestock & Ag Mechanics.....	26
Entry Limit	27
Ownership of Entry	27
Exhibitor Liability	27
No Guarantee	27
Division/Class Cancellation	28
Entry Errors	28
Substitution.....	28
Previously Entered Entry.....	28
Verification	29
Responsibility	29
Removal of Entries	29
Dishonored Checks	29
Entry Fees.....	29
Late Entries	29
Design	30
Juniors Entering Senior Department.....	31
State Fair Employee Participation	32
Disqualification.....	32
Entry Disqualifications/Transfers.....	32
Disqualifications	32
Cooperation	33
Public Disturbances	33
Probation.....	34
Judging.....	34
Judging.....	34
Judge/Exhibitor Information.....	34

Judge/Fraternization/Criticism	34
Judge's Decision	35
Chief Judge Policy.....	35
Protests.....	35
Awards	36
Special Awards	36
Tax Laws.....	36
Premium Awards.....	36
Age Requirements.....	36
Junior Exhibitors Membership Age and Affiliation Requirements.....	36
Independent Junior and Grange Age Requirements	37
FFA Age Requirements	38
Independent and Grange Animal Exhibitors.....	38
Member Standing and Ownership Requirements	38
Eligibility Questions	38
4-H Age Requirements	39
Independent Junior and Grange Age Requirements	39
No Dual Affiliation in Competition	39
Adult Supervision Requirement	39
FFA Supervision Requirement	39
Uniforms	40
Free Speech Activities Guideline	40
Definitions	42

IMPORTANT INFORMATION TO KNOW

Contact: Delgreta Brown

California Crafts Coordinator

Phone: (916) 263-3135 & E-mail: creativearts@calexpo.com

Entry Dates & Deadlines:

March 4	Entries Open Registration online
April 5	Entries Close online at 11:59 PM & entry fees must be paid
May 23	Preliminary Acceptance Notification Email by 6 PM
May 31	Shipped entries due
May 31 - June 1	Hand deliver entries between 9AM - 5PM
June 11	Displayed Work Notification Email by 6PM
June 14 - 15	Pick up of non-displayed items
July 12	Exhibition Opens. Award Results posted online
July 14	Awards Ceremony
August 3	Pick up exhibits 9AM - 5PM
August 8-15	Return shipped items

The California State Fair July 12-28, 2024

The California State Fair has always been the awe-inspiring showcase of the state's finest, and ever since the first fair in 1854, California has upheld this tradition. People come from all over to witness the competition and innovation that our exhibitors produce. We continue to add new and exciting competitions to our competitive programs to showcase California's very best!

Why enter the Competition?

Making something that is beautiful, useful, decorative, intricate and/or challenging is an accomplishment in itself. Artisans and craftspersons spend many hours perfecting their techniques and finding just the right materials. The resulting items are admired by family, friends, and acquaintances. Entering an item into a competition is a way to share it with a much wider audience and gain accolades far beyond one's closest family and friends. Exhibited items can inspire Fair visitors to learn a new skill or perfect one that they've been working on for a while and adds value to the craft. In the end, everyone wins!

COMPETITION OVERVIEW



The mission of California Fiber Crafts is to provide, through fair and equitable competition, a California State Fair exhibit of the finest examples of crafts being done in the state.

Who Can Enter & Entry Fee

California residents who have reached 18 years of age as of January 1, 2024.
All entries must be made by California residents!

Needle and Fiber Art - \$12

Quilts - \$15

Special Contests: Almost Edible - \$12

Entry Fee is non-refundable.

Entry Deadline

All entries must be registered online an image of your entries uploaded, and entry fees paid, at **CalExpoStateFair.com/competitions** by 11:59 pm April 5, 2024. Late entries will not be allowed.

How to Enter

1. Go to **CalExpoStateFair.com/Competition** and click on the **California Fiber Crafts** icon under the competitions page and follow the instructions. Use a Visa or Master Card to pay the entry fees.
 - a. Names, titles, addresses, etc. will be used exactly as entered for award tags and payment of award premiums. Please pay special attention to proper spelling, capitalization, full name of cities/counties, no abbreviations, and the correct mailing address.
 - b. **“Descriptions”** may not contain personally identifying information. List any kits, materials, and techniques used only.
2. **You must upload a photograph of your craft item to complete your entry. The photograph has no bearing on if your item is accepted. All items entered in the Fiber Arts divisions will be accepted for judging as long as they meet standards and requirements. The photograph is**

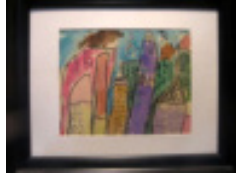
required for identification and entry tag purposes only.

3. After payment of fees within ShoWorks, a box will appear with a notification.
 - a. Click the “**Upload Files**” button.
 - b. Confirm that the Division and Class across the top of the window are correct for the entry image files being submitted.
 - c. Click “**Choose File**” and choose a saved file from your computer. Click “**Open.**”
 - d. Confirm that the thumbnail to the right of the title is the correct photo and Click “**Upload.**”
 - e. When progress bar reads “**100%**” and “**Upload Complete**” click the “**Next**” button.
 - f. If you have another entry, continue to upload required photos repeating steps.
 - g. When all images are uploaded, click “**Done.**”
 - h. If after you have finished and quit, you discover you have uploaded the wrong image file(s) you can log back into “**My Account**” and select “**View/Print transactions made by the Exhibitor**” and select the “**Upload Files**” button. The second upload to entry will replace the initial image with the newly uploaded file.
4. The California Crafts competition is unique in the work cannot be adequately judged from a photograph. The photograph acceptance at the time of entry is used to determine that the work meets the standards of the basic rules and requirements of the completion, and to determine if the work is entered in the correct Division and Class. **Notification of acceptance (Accepted/Not Accepted) will be posted to the California Crafts web page CalExpoStateFair.com/crafts/.** Exhibitors will receive an “**Accepted**” email via the submitted email address. Results will be posted by entry number and listed by division and class. Results are scheduled to be posted on June 11, 2024 by 6pm. No results will be given over the phone. Any work not named on the accepted list should not be delivered to the State Fair.
 - a. “**Accepted**” entries must be delivered to Cal Expo for a Confirmation Judging where placings will be determined. (see Calendar)

Photographing Your Entry for the CA State Fair

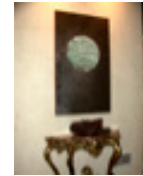
Fill the Frame

Get as close to your artwork as possible. Make sure only your artwork fills the entire frame.



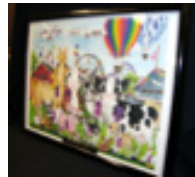
DO NOT Include Background Items

For 3-D items, use draped fabric for a neutral background. Include frame only if considered part of the artwork.



Shoot Straight

Stand your art up straight and take your photo with your camera at the same level as your artwork.



Use Natural Light

Outdoor light gives the best results. A flash may reflect off of smooth surfaces or make your image look flat.



Focus

Make sure your photo is in focus.



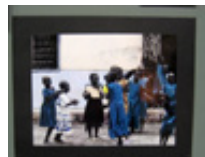
3-D Entries

Photograph 3-D entries from 3 different angles to show every detail.



Photographs & Graphic Arts

Convert the original image file to a 6MB .jpeg, .gif, .bmp, .png, or .tiff file.



Square It Up!

Objects look rounded when photographed too close. Back up, retake the shot, & crop image.



OTHER TIPS

- ✓ Digital images must be an accurate representation of the artwork. Misrepresented entries will be disqualified and not exhibited.
- ✓ If the artwork is already framed, take it out of the frame if possible to photograph it.
- ✓ Do not caption or “watermark” the digital image.
- ✓ Photo maximum file size: 7MB If the file size is larger, use a photo editing program to resize file. Free programs available: Microsoft Image Resizer, Microsoft Photo Editor, Picasa, Infranview, Photoscape, and others.
- ✓ Save images in RGB only.

RULES & REQUIREMENTS

There are no prerequisites for entry into this competition.

Entries

1. Exhibitor can not enter more than three (3) entries per class. For example this means an exhibitor can enter up to three quilts in Applique Quilts and up to another three quilts in the Pieced Quilt class.
2. All entries must be the sole work for the exhibitor who is entered and to whom the premium will be paid.
3. Entries must be complete, new, clean, sanitary and made within the past two years. Soiled entries (including apparel) may be disqualified. Damaged entries will not be accepted. Wet or otherwise unfinished items will not be accepted.
4. Same or identical items cannot be entered in more than one competitive program or class.
5. Entries may not be entered into California Fiber Crafts more than once.
6. Entries must be entered in the Division or Class which is the most appropriate for the items entered and is the main focus of judging. (Example: If you are entering a quilt, however, the squares are embroidered, and you want the embroidery to be the focus of judging, enter in Needle and Fiber Arts, the Embroidery Division. If you want the quilting part to be the focus of judging, enter the Quilt Division).
7. Transfers: At the discretion of the Judges or Program Coordinator, an entry may be transferred to a Division or Class deemed more appropriate.
8. Commercial Kits: If a commercial kit was used in the construction of the entry it **must be listed** under “Description” when entering online.

Display of Accepted Entries

9. Entries requiring hanging must be securely wired or equipped for hanging.
10. Three-dimensional entries not intended to hang are to be on a base when necessary for structural support and proper presentation. The State Fair may at its discretion choose not to use the base provided by the exhibitor.
11. The manner of display and the placement of entries in the exhibit is entirely at the discretion of the California State Fair. All care and

consideration will be taken to assure the proper and appropriate display of all items.

12. The State Fair cannot guarantee that all display requirements of an entry can be provided (i.e., electricity, showcase, pedestal, special lighting, special location, water source, computer service, or any other special requirement).
13. Entries are winning 1st, 2nd, 3rd, 4th place, or Honorable Mention will be displayed, as space allows.

Disclaimers

14. Although care and diligence will be exercised in the course of receiving and handling entries, the California State Fair is not responsible for any technical malfunctions, failures, omission, interruption, or defect of any entries. Nor are we responsible for entries that are not received in accordance with deadline rules due to a computer or electronic malfunction or other reason.
15. The California State Fair is not responsible for any display props left with the work. The submission of display props is neither encouraged or required, and they are left at the risk of the exhibitor.
16. Insurance is the responsibility of the exhibitor. The California State Fair does not ensure exhibits and is not responsible for any loss, damage or theft of entries.
17. Photographs are taken in Expo Center Buildings during the Fair. These photographs are used for publicity purposes and archives. By submitting your entry form, exhibitors are giving the California State Fair permission to use such photographs at their discretion without compensation to, or prior approval from, the exhibitor.

DELIVERY, SHIPPING, & PICK UP

Hand Delivery & Pick-up:

1. Hand deliver entries to Cal Expo Fairgrounds, **Expo Center #8**, (see map and calendar) and follow signage to the building.
2. Entrants will be given a claim check for each entry delivered.
3. Entrants are responsible for the unloading and loading their items. If entry size and bulk requires special equipment for unloading, please contact the California Fiber Crafts Coordinator.
4. Post Fair, pick-up all entries from Expo Center. (*See map and calendar and follow signage*)
5. Directions to Expo Center: enter CalExpo Fairgrounds via Gate 12 at Ethan and Hurley Way and follow the access road past Raging Waters, Expo Center is directly ahead.
6. If someone other than the entrant will be picking up an entry, they must bring a signed letter of authorization from the artist. No exceptions.
7. Exhibitors unable to pick up entries must send in an envelope or box with shipping information and pre-paid postage to have their entries shipped back to them. Please also include shipping form, available online at CalExpoStateFair.com/competitions.
8. Entries not picked up on or **by September 1, 2024**, are considered abandoned and will be recycled or donated.

Show Selection Notification:

During in person judging the judges will place the entries. Those being selected for awards will be displayed. Notification of acceptance (Accepted/Not Accepted) will be posted to the California Crafts web page CalExpoStateFair.com/crafts/. Results will be posted by entry number and listed by Division and Class. Order of the results displayed is not indicative of the placings. Results are scheduled to be posted on June 26 by 6 pm. No results will be given over the phone. Any work not named on the accepted list must be picked up on June 17 between 9 am and 5 pm.

Shipped Entries:

9. Shipped entries arriving at the California State Fairgrounds after the Delivery Deadline of May 31, 2024 (see calendar) will not be judged or displayed.

Mail or ship **“Accepted”** entries to:

California Fiber Crafts Competition

California State Fair
Administration Building
1600 Exposition Blvd.
Sacramento, CA 95815

10. All shipped entries must be accompanied by a Shipping form available online at CalExpoStateFair.com/competitions.
11. Entrants assume all responsibility for the condition of their entry and the quality of the shipping containers. Shipping insurance is the responsibility of the exhibitor.
12. Shipping containers must be reusable for return shipping purposes. The Fair will not provide any additional packing material.
13. Shipped framed entries must have Plexiglas instead of glass.
14. Shipped or mailed entries will be packed and returned after August 8, 2024.

JUDGING

1. The American System of Judging is used for the evaluation of entries in California Fiber Crafts.
2. The California State Fair engages judges who are well qualified in the field (or fields) they judge.
3. The decisions of the judges are final.

AWARDS

The California State Fair will award the following:

NEEDLE & FIBER ARTS AWARDS

Best of Show	\$100 and Golden Bear Trophy
Best of Division	Rosette and \$30
1 st Place	Ribbon and \$30
2 nd Place	Ribbon and \$20
3 rd Place	Ribbon and \$10
4 th Place	Ribbon

QUILT DEPARTMENT AWARDS

Best of Show	\$100 and a Golden Bear Trophy
Best of Division	Rosette and \$50
1 st Place	Ribbon and \$60
2 nd Place	Ribbon and \$50
3 rd Place	Ribbon and \$40
4 th Place	Ribbon

SPECIAL CONTEST DEPARTMENT AWARDS

Best of Division	Rosette and \$55
1 st Place	Ribbon and \$55
2 nd Place	Ribbon and \$25
3 rd Place	Ribbon and \$20
4 th Place (Honorable Mention)	Ribbon

Note: Special Contest entries will be included in the Best of Show to which their method of creation is most prevalent.

For Additional Sponsored Awards, see Competition Departments.

1. No exhibitor will be paid more than two cash premium awards in any one class.
2. **Best of Division Awards:** First Place winners in each Class are eligible for Best of that Division.

3. **Best of Show Awards:** Best of Division winners in each show are eligible for Best of Show.
4. All Awards are based on merit and may or may not be awarded at the judge's discretion.

Sales Information

Entrants will have the option of placing their work for sale. When setting the price of their work, entrants are advised to take into consideration the commission, the cost of framing and/or otherwise preparing their work for display, as well as the cost of delivery of their work. **A commission of 30% of the purchase price** on each item sold will be retained. Sales tax will be charged to these sales. The Fair will not ship purchases to buyers, and items must be picked up by the buyer after the fair. A portion of the commission will be donated to the Friends of the California State Fair Scholarship Fund.

DIVISIONS & CLASSES: NEEDLE & FIBER ARTS

Entry Fee, all classes - \$12.00 per entry

Special Rules included here are in addition to the Rules and Requirements and the General Rules.

Division 153: Basketry

Class 1 - Coiled/Knotting

Class 2 - Plaiting

Class 3 - Twining

Class 4 - Wicker

Notes for Division 153:

- a. Baskets may be made of any fiber. Baskets made of materials other than fiber, such as metal, may be entered in Adult Handcraft Department in Division 118 - Other Handcraft.
- b. Sculptured Basket Weaving may be entered in each of the classes based upon the primary method of construction. Non-fiber materials may be used, however sculptured work must be made primarily from the fiber.

Division 155: Crochet

Class 1 - Crocheted Afghans

Class 2 - Crocheted Wearing Apparel

Class 3 - Crocheted Doilies

Class 4 - Any other Crocheted Item

Notes for Division 155:

- a. **Class 1:** Afghans may be any size.
- b. **Class 2:** Wearing Apparel may be of any size.
- c. **Class 4:** Includes, but is not limited to bed coverings, table coverings, window coverings, tea cozies, pillows, pillow cases, etc.

Division 155 does not include toys. Enter toys into the Dolls and Toys Division in the Adult Handcrafts Department.

Division 157: Embroidery (Counted Techniques)

Class 1 - Traditional Cross Stitch

Class 2 - Sampler

Class 3 - Non-Framed

Class 4 - Other

Notes for Division 157:

- a. **Class 1:** Work must be framed.
- b. **Class 2:** Samplers must be framed. Samplers must include two or more counted techniques in the entry.
- c. **Class 3:** Includes, but is not limited to pillows, bell pulls, etuis, etc.
- d. **Class 4:** Includes, but is not limited to blackwork, hardanger, cutwork, pull work, silk/metal, etc.

Division 158: Embroidery (Non-Counted)

Class 1 - Surface Techniques: Framed

Class 2 - Surface Techniques: Non-Framed

Notes for Division 158:

- a. **Class 1 & 2:** All embroidery must be completed by hand. Includes, but is not limited to crewel, whitework, shadow work, silk, ribbon, stumpwork, Brazilian, needle lace, beading, etc.
- b. Entries will be judged on embroidery styles and elements only. Example: A garment or quilt submitted to this division will be judged on embroidery alone. To be judged as a whole, quilts should be entered in a quilting division and garments into Wearable Art or

another garment construction class (Division 170).

- c. All entries should represent finished items, not samples.

Division 159: Handspun Yarn

Class 1 - Art/Textured

Class 2 - Wool

Class 3 - Plant Fibers

Class 4: Luxury Fibers

Notes for Division 159:

- a. Submit only one skein per entry.
- b. Include fiber type and the intended end use in the “description” field when entering.
- c. Do not attach or include a sample of the fiber or list of fibers used such as “angora and silk.”
- d. Each skein must be tied loosely with matching yarn in 3 to 4 places in figure eight.
- e. **Class 3:** Includes, but is not limited to cotton, ramie, hemp, flax, rayon, bamboo, etc.
- f. **Class 4:** Includes, but is not limited to llama, alpaca, camel, quiviut, etc. Entries in this class must be 75% luxury fiber.

Division 160: Knitting

Class 1 - Sweaters & Skirts

Class 2 - Shawls & Scarves

Class 3 - Wearable Accessories

Class 4 - Other Knitted items

Notes for Division 160:

- a. Machine knitted items are not eligible for entry.
- b. **Class 1, 2, & 3:** Wearable items may be for youth, adults, or pets.
- c. **Class 3:** Includes, but is not limited to socks, gloves, mittens, and hats.
- d. **Class 4:** Includes, but is not limited to afghans (may be any size), tablecloths, bags, wall hangings, bed coverings, art pieces, etc.

Division 163: Needlepoint

Class 1 - Framed

Class 2 - Non-Framed

Notes for Division 163:

- a. Entries should be worked on needlepoint canvas. Works on plastic canvas are not eligible for entry.
- b. **Class 2:** Includes, but is not limited to pillows, Christmas stockings, holiday ornaments, decorations, bell pulls, 3-D forms, or sculptural forms, etc.

Division 165: Other Fiber Art

Class 1 - Lace/Tatting

Class 2 - Felting

Class 3 - Weaving

Class 4 - Any Other Fiber Art

Notes for Division 165:

- a. **Class 4:** includes, but is not limited to, soft sculpture, pillows, wall hangings, etc.

Division 167: Rugs

Class 1 - Traditional Hooked Rugs

Class 2 - Braided Rugs

Class 3 - Other Rugs

Class 4 - Modern

Notes for Division 167:

- a. Items entered in this Division should be intended for use on the floor. Wall hangings and other hooked wool items may be entered in Division 165, Class 4, Any Other Fiber Art.

Division 170: Wearing & Designer Apparel

Class 1 - Modern Apparel

Class 2 - Costumes & Historical Apparel

Class 3 - Wearable Art

Class 4 - Upcycle Fashion

Notes for Division 170:

- a. **Class 1:** Items should be a stitched garment. Woven, knitted or crocheted garments should be entered in Division 155, 160, or 165.
- b. **Class 2:** For Historical Apparel, please detail the technique used in the “description” field when entering online. If more space is required, submit a typed description with garment upon delivery. Descriptions are for judging purposes only and will not be displayed or returned.

- c. **Class 3:** Includes, but is not limited to, garments made of hand-woven fabric, garments made from non-fabric materials, garments that incorporate electronics or other technology.
- d. **Class 4:** Must be handmade solely from recycled or re-purposed materials. Use of props/embellishments are not allowed.

Needle & Fiber Arts Judging Criteria

- Workmanship
- Level of Difficulty
- Design, including color and texture
- Appropriate Pattern Technique
- Creative use of materials or fabric

Needle & Fiber Art Sponsored Awards

Each year, Special Awards of cash, gift cards, gift certificates and other prizes are donated to the competition by Organizations, Guilds, Businesses, and Individuals. Some of these awards are specific to a particular show, a Division or a Class.

DIVISIONS & CLASSES: QUILTS

Entry Fee, All Classes - \$15.00 per entry

Special Rules included here are in addition to the Rules and Requirements and the General Rules.

Division 191: Applique Quilts

Class 1 - One Person - Small

Class 2 - One Person - Medium/Large

Class 3 - Two or More People - Small

Class 4 - Two or More People - Medium/Large

Division 192: Art Quilts

Class 1 - One Person - Small

Class 2 - One Person - Medium/Large

Class 3 - Two or More People - All sizes

Notes for Division 192:

- a. Art Quilts must be an original design, meant to be used as a work of art, and made entirely by the entrant.

Division 196: Miniature Quilts

Class 1 - One Person

Class 2 - Two or More People

Notes for Division 196:

- a. Miniature quilts are large scale quilts made in a miniature size consisting of traditional piecing and/or applique blocks; completed/repeated blocks are usually no more than 3"-4", and overall quilt size is no larger than 24" in either dimension.

Division 197: Other Technique Quilts

Class 1 - One Person - Small

Class 2 - One-Person - Medium/Large

Class 3 - Two or More People - Small

Class 4 - Two or More People - Medium/Large

Class 5 - Other Quilted Items

Notes for Division 197:

- a. Other Techniques include, but are not limited to, Yo-Yo, Whole Cloth, Cathedral, Window, Origami, etc.
- b. **Class 5:** other quilted items include, but are not limited to wearable art, accessories, and home use items such as vests, jackets, purses, hats, table runners, tree skirts, etc.

Division 198: Pieced Quilts

Class 1 - One Person - Small

Class 2 - One Person - Medium/Large

Class 3 - Two or More People - Small

Class 4 - Two or More People - Medium/Large

Division 199: Modern Quilts

Class 1 - One Person - Small

Class 2 - One Person - Medium/Large

Class 3 - Two or More People - Small

Class 4 - Two or More People - Medium/Large

Note for Division 199:

- c. Quilts in this Division should be primarily functional and inspired by modern design. These include, but are not limited to: the use of bold colors and prints, high contrast, and graphic areas of solid color, inventive piecing, minimalism, expansive negative space, and alternate grid work.

Quilt Judging Criteria

- Workmanship (including finishing)
- Design Elements (balance, color, contrast, unity)
- Technical Elements (technique or multiple techniques)

Quilts Sponsored Awards

Each year, Special Awards of cash, gift cards, gift certificates and other prizes are donated to the competition by Organizations, Guilds, Businesses, and Individuals. Some of these awards are specific to a particular show, a Division or a Class.

DOROTHY KILLIAN PAINTER QUILTER AWARD

The family of Dorothy Killian Painter awards \$250 to their choice in Division 196, Miniature Quilts. In addition, will award up to \$250 to unusual or visually striking quilts in a Division or Class.



G&P TRADING “APPLIQUE QUILT” AWARD

G&P Trading Awards two Applique Kits. “The Whole Country Caboodle” kits by Leanne Anderson include precut fused applique and finished drawing for assembling applique. The kits are images of 1 goat and 1 cow in keeping with the agricultural heritage of the CA State Fair. We celebrate Artists of the Craft community and wish to recognize the winning artist(s) of the Fiber Craft: Applique Quilts Competition.

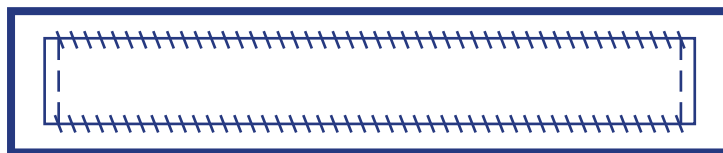
Definitions

1. A quilt must be three layers (two layers of fabric separated by a layer of batting) held together by stitches.
2. Small quilts have a perimeter of 240 inches or less.
3. Medium/Large quilts have a perimeter of 241 inches or more.
4. Miniature quilts are defined as being miniaturized versions of traditional quilt sizes and patterns in either the making of the top or in the stitching; consisting of traditional piecing and/or applique blocks; completed/repeated blocks of no more than 3”-4” and overall quilt size of no larger than 24” in either dimension.
5. Two or More People Quilts: Any quilt whose entirety was not the sole work of one individual.
6. Quilts entered in the California State Fair must be completely California-made. Quilts with any portion made or quilted out of state do not qualify for the California Fiber Crafts Competition. All participants must be California residents.

7. Art Quilts must be an original design, meant to be used as a work of art, produced with creative thought without copying the work of others. The quilt must be made entirely by the entrant.
8. Applique quilts use the process of stitching together two layers of fabric, usually with a soft, thick substance placed between them. Applique quilts should be mainly applique and may be based either on traditional or innovative patterns and settings.
9. Pieced Quilts are made by sewing together smaller pieces of fabric into a larger “block” of fabric to create the basic unit. Quilts in this category should be mainly pieced and may be based either on traditional or innovative patterns and settings.

Special Rules

10. Quilt Sleeve: All entries entered in any Quilt Division must have a sleeve basted (sewn) across the entire top edge of the quilt for display purposes. (See illustration below.) The opening must be 4 inches from seam to seam for all quilts other than miniature quilts.
11. Miniature quilts must have a minimum 2-inch sleeve basted (sewn) across the entire top edge of the quilt for display purposes.
12. Quilts with a sleeve smaller or larger than 4 inches or a sleeve that is not securely attached (sewn) will be disqualified. The State Fair will check all quilts before they are judged for competition to be sure they qualify. Quilts with a wood or other type of dowel included in the sleeve will be disqualified.
13. Illustration of quilt sleeve attachment:



DEPARTMENT: CRAFTS SPECIAL CONTESTS

Entry Fee: \$12 per entry

Special Rules included here are in addition to the Rules and Requirements and General Rules.

Division 223: “Almost Edible”

Class 1 - Needle & Fiber Art Crafts

Class 2 - Handcrafts

Notes for Division 223:

- a. Entries may not be entered into multiple Divisions and/or Classes.
- b. Items should be primarily handmade. Upcycled items may be used. Entry description must note portions of entry that are upcycled and not handmade.

Concept:

Food is a conversation starter across the world despite ethnicity, language, religion, or income class. Our common enjoyment of food brings families, cultures, and communities together for celebrations, traditions, and for simple pure enjoyment as Connoisseurs of Cuisine - or affectionately termed “Foodies.” Consider what your favorite food is and share with us your version of its appearance. It should elicit hunger cravings, evoke sentimental memories, and be so realistic that it is “Almost Edible”. However, beware it’s only art that is consumed by the eyes of onlookers for this competition!

“Almost Edible” Judging Criteria:

- Level of Difficulty and/or Skill
- Craftsmanship
- Creative use of materials or fabric
- Relationship to concept/theme

2024 GENERAL RULES

California Exposition & State Fair

General Rules are subject to any action that may cause revision or curtailment at any time before each competition or judging. Upon submission of online entry and signature on detailed receipt if applicable, the exhibitor acknowledges that they have read and understood these rules and all others of the competition in which they enter. Furthermore, exhibitors are responsible for viewing, reading and understanding all revisions or curtailments on the State Fair's website before the competition. Exhibitors may request an additional copy of the most current rules by contacting the entry office: email: entryoffice@calexpo.com.

Exhibitors Entry Responsibilities

STILL EXHIBITS

1. All submissions and information necessary to determine that the exhibit is eligible must be submitted online, uploaded if necessary, and entry fees paid by Visa or MasterCard by the entry deadline.

It shall be the responsibility of the exhibitors to correct all deficiencies in connection with entries or exhibiting which are required of them by the rules printed in the Competition Guide.

Entries will not be judged if deficiencies have not been cleared or fees paid.

LIVESTOCK & AG MECHANICS

2. All signatures and information necessary to determine that the exhibit is eligible must be submitted online for Junior Livestock, Open Livestock, Ag Mechanics, Best of Show and Small Animals.

All Livestock, Small Animal, Best of Show and Ag Mechanics exhibitors will be required to submit a Detailed Receipt with all required signatures within one week of the entry deadline.

It shall be the responsibility of the exhibitor to correct all deficiencies in connection with entries or exhibiting which are required of them by the rules printed in the Competition Guide.

A deficiency penalty of \$20 per entry must be paid for any deficiency or fees which have not been paid by July 1 for Livestock and Small Animals, this includes not returning the detailed receipt by the due date.

Entries will not be judged if the detailed receipt is not received.

This rule shall apply to all equine shows with a requirement for their fees, forms, and signatures being submitted by the entry deadline date within each equine section of any competition guide.

ENTRY LIMIT

3. The State Fair management shall reserve the right to limit entries displayed and/or exhibited to facilities available and may limit the number of entries made by an exhibitor.

Entries may also be limited or not displayed based on size, content, subject material, or for any reason determined not in the best interest of the California State Fair.

Any return of entries under this rule will be done at the sole discretion of the State Fair management.

OWNERSHIP OF ENTRY

4. Unless specific provisions are otherwise made in the Competition Guide (printed or on the web), exhibitors must be the bona-fide owner of their entries.

The management may demand such proof of ownership as it deems necessary in each case.

EXHIBITOR LIABILITY

5. Each exhibitor will be solely responsible for any consequential or other loss, injury or damage done to, or occasioned by, or arising from, any animal or article exhibited by him/her.

Exhibitor agrees to indemnify, and hold harmless, the State of California, California Exposition & State Fair and all officers, agents, and employees thereof from all claims, demands, damages, costs, expenses, or liability costs suits or actions of every name, kind and description, brought forth from or on account of, injuries to death of any person including but not limited to workers, and the public, or damage to property resulting from the performance of the exhibitor or entries.

Neither party shall request apportionment of liability by a jury.

NO GUARANTEE

6. The State Fair cannot guarantee that all exhibition requirements of an entry can be provided (i.e., electricity, a showcase, a pedestal, special lighting, special location, total space requirements, water source, computer services, or any other special requirements).

DIVISION/CLASS CANCELLATION

7. The State Fair management reserves the right to return entries and cancel any division or class in which, in its judgment, the entries are insufficient to secure adequate competition.

ENTRY ERRORS

8. State Fair management is not responsible for finding errors in entries.
9. Exhibitors are responsible for any and all errors which were submitted online.
10. No exhibitor shall be entitled to an award which has been disallowed as the result of his own error.
11. The State Fair management shall withhold the payment of awards for exhibits that are ineligible and may recover awards that have been paid for ineligible entries that are disclosed during post audits of State Fair records. However, exhibitors with a cause are entitled to question the validity of any disallowance. Such exhibitors should inform the State Fair management immediately, in writing, giving their name, address, complete description of the entry and the reason for requesting reconsideration. Requests will not be considered later than ninety (90) days after receiving notice of disallowance.

SUBSTITUTION

12. Substitutions may be made in still exhibits only in the same division of the original entry of the original exhibitor, and may be made only if completed by the entry delivery date.
13. Substitutions for livestock must be in the same division of the original entry by the original exhibitor.
14. Substitutions must be made at the time of check-in to avoid penalty.
15. Fees may apply for substitutions in excess of two per division.
16. The State Fair or the judge may disqualify or transfer to the correct class any entry which is not a true representative of the division or class in which it is entered.

PREVIOUSLY ENTERED ENTRY

17. Any non-animal (still exhibit) entry that has been exhibited at a previous California State Fair is not eligible for entry in the 2024 California State Fair.

VERIFICATION

18. Online submissions will receive a confirmation once entries are submitted.

RESPONSIBILITY

19. The State Fair shall not be responsible for exhibits remaining on the fairgrounds after designated release times.
20. All Still Exhibits or display elements remaining on the fairgrounds after designated release time will be treated as abandoned property and will be disposed of on or before September 1 of the same year.

REMOVAL OF ENTRIES

21. An exhibitor may not remove his or her entry from the California State Fair once it has been accepted.
22. **Judged or Accepted:** Entries must be on exhibit at the official opening of the State Fair or at any other time specified in the Competition Guide and shall not be removed from the fairgrounds prior to the release date printed in the guide, except (at the discretion of the State Fair management) in cases of positive evidence of sickness, accident and/or death, or other circumstances that are in the best interests of the State Fair.

DISHONORED CHECKS

23. A penalty of \$25.00 per dishonored check must be paid if a check for payment of entry fees or other applicable fees is refused by the bank. Only cash, certified check or money orders are acceptable for the penalty payment.

ENTRY FEES

24. Entry Fees are NON-REFUNDABLE.

LATE ENTRIES

25. Late Entries may be accepted at the sole discretion of the California State Fair under the following conditions:
 - a. Late Entries will **NOT be accepted** for **California Crafts, Fine Art, Student Showcase, Photography, Canning & Baking, and County Fair Best of Show Master Showmanship.**
 - b. If the department accepts late entries, the completed entry form(s) and other completed required forms, signatures and full payment for all required fees must arrive at the California State Fair Entry Office

(by Certified Mail, Hand Delivery or Electronically) no later than five calendar days after the official entry deadline requirement of the competition.

For example, if the Official Entry Deadline is June 12, the last day and time a late entry may be eligible would be June 17 at 4:00 pm. If late entries arrive after 4:00 pm on that fifth day, they will NOT be considered.

- c. Open **Livestock Late Entries** will be accepted until July 5, 2024, with **an additional \$100 per entry**. Payment must be received no later than 5 pm on July 5, 2024.
- d. Extended Entry Deadline for Open Boer Goats, NDGA Nigerian Dwarf Goats and Open Pygmy Goat Shows will be July 10.
- e. All late entries must be accompanied with the entry fee as listed within the program in addition to a **late fee of \$20 per entry for all Junior Livestock and Open Livestock** entries and a **late fee of \$10 per entry for non-livestock competitions and small animals** (Fur and Feathers and dogs). Acceptable forms of payment are Visa, Master Card, check or money order.
- f. Exhibitors who are already entered as exhibitors may add additional entries as long as the animal is already entered by paying a \$100 late fee plus the original entry fee.
- g. No entries will be accepted beyond the capacity of the facility.
- h. All other entry requirements as well as any rules, regulations and schedules shall apply.
- i. No entry is a guarantee of acceptance and it is the exhibitor's responsibility to confirm that the State Fair has accepted any and all entries.
- j. The California State Fair expressly reserves the right to reject any and all entry forms for any reason whatsoever.

DESIGN

- 26. The California State Fair assumes total design control over the presentation of the exhibits.
- 27. Entries designed for hanging and not so equipped will be hung in a manner deemed appropriate by the State Fair.
- 28. No exhibit changes will be made once the entries have been displayed.
- 29. Once an entry has been received by the State Fair, no further handling of entry by exhibitor shall be permitted.

30. Relocation and final placement shall be accomplished by State Fair personnel.
31. Entries requiring assembly/disassembly must include detailed instructions and sketches for assembly/disassembly.
32. Instructions should indicate lifting points, unsecured parts and any other information required for such handling. Where necessary bank pins will be utilized to attach exhibits for display.

JUNIORS ENTERING SENIOR DEPARTMENT

33. All divisions and classes within Junior Departments are intended for Juniors exclusively. Entry into the Junior Department is regulated by age and youth organization requirements as outlined in this competition guide. In no case may a person, group or organization outside of these age requirements (younger or older) be allowed to enter and compete in the Junior department.
34. However, Juniors may elect to enter, exhibit and compete (animal or non-animal) in the Senior Department when the rules of that department, division or class allow for such. Such entries shall be restricted to:
 - a. A class for the exhibit that is not provided in the Junior Department.
 - b. Junior Livestock Exhibitors that officially enter and show in the Junior Livestock Show are eligible to compete in the Open Show as long as the same exhibit/animal is entered and shown in the Junior Show and the same exhibit/animal is entered and meets all Open Division entry deadlines and guidelines.
 - c. Open classes or divisions that allow for the participation of Juniors due to the open competition being a specialty, feature, regional or national show sanctioned by the State Fair and/or recognized organization. In this case, the Junior exhibitor must also enter and compete (with the same exhibit) in the current year's Junior department, division, class offered for the exhibit. This provision must be printed specifically within the rules of the feature show within this guide.
35. Anyone under the age of 18 who meets the California State Fair age requirements and is planning to exhibit in a Senior department must have their parent or legal guardian sign their detailed receipt.
36. If the exhibitor is required to be on the fairgrounds, the Junior must be supervised by their parent or legal guardian while at the State Fair.
37. Exhibit animals owned in partnership between Seniors and Juniors shall not affect Junior's eligibility when the Senior partner is the exhibitor.

STATE FAIR EMPLOYEE PARTICIPATION

38. No employee of the State Fair will be permitted to enter an exhibit for competition. No person shall be an exhibitor or sign an entry form as an agent in any Division or Department in which the exhibitor is a department head, judge, or paid employee.

Disqualification

ENTRY DISQUALIFICATIONS/TRANSFERS

39. A complete exhibit eligible in more than one Division and/or Class shall be entered and judged only in the Division and/or Class for which it best qualifies.
40. The State Fair or the judge may disqualify or transfer to the correct Class (at his/her discretion) any exhibit which is not a true representative of the Division or Class in which it is entered.

It is not, however, the responsibility of the State Fair or judges to transfer an entry to the correct Division and/or Class.

DISQUALIFICATIONS

41. The State Fair management shall reserve the right to vacate, declare ineligible for competition, and/or order the removal of any entry which is not in the best interest of the State Fair, is unsightly, unhealthy, injured, lame, unsound, endangers public safety, violates the State Fair's Animal Welfare Policies, or has been entered in violation of these rules and regulations.
42. In the event, an entry or an exhibitor is disqualified for any rule or policy violation (including but not limited to practices or procedures that are unethical, those in violation of the State Fair's Residue Avoidance Program, DNA Testing Program and those not adhering to the State Fair's schedule for the program), any or all of the following actions may take place:
 - a. The entry or exhibitor that is disqualified will be declared ineligible and will not receive awards, premium money and/or any sale proceeds. Further, the exhibitor shall be responsible for payment of any fees, fines due or costs incurred by the State as a result of disqualification.
 - b. The owner/exhibitor and members of his/her immediate family will not be eligible to compete in subsequent California State Fair Programs. The extent and degree of future eligibility shall be determined by State Fair Management.

- c. State Fair Management reserves the right (but does not guarantee) to move entries up in placing after judging has taken place when an award void is created by a disqualification.
- This process of moving up judged entries shall only take place, however, when it is clear what the judge's placing would have been had the disqualified entry not been in competition.
 - For example, when a Champion is disqualified, the Reserve shall move up and be named the Champion; however, no other changes shall take place below the Reserve Champion. The same shall apply in the case of a class, section or division winner when a 2nd place has been clearly indicated by the judge.
 - If it is not possible to clearly determine a new placing, no change shall take place.
 - When a placing change does take place the entry moving up will receive all the awards, appropriate titles and all premiums of the disqualified entry but will not receive any of the original placing awards or premiums won in the second category. In other words, 2nd place will now receive 1st money and "no" entry will receive 2nd money.

COOPERATION

43. Exhibitors, their immediate family, leaders, advisors and agents thereof, not cooperating with security personnel or any other State Fair officials in all matters of policy, including but not limited to parking, stall/pen/ space assignments and appearance, judging and/or animal care will have their entries cancelled and will be ordered to remove their exhibit from the grounds immediately and forfeit all awards, premium monies, and sale proceeds. Failure to adhere to this rule will result in being banned from the State Fair.

PUBLIC DISTURBANCES

44. Exhibitors causing public disturbances, those who are uncooperative and/or unsportsmanlike, those not following good animal welfare practices as determined by management, or those found in violation of rules or in practices unethical or inimical with the State Fair program and/or policies/ procedures shall be penalized by forfeiture of premiums awarded, any and all awards, payments of fines and/or damages to State Property, privileges, and/or disqualification at this or subsequent State Fairs as may be deemed appropriate by the State Fair Management and/or the Board of Directors.

Further, if the exhibitor and/or exhibitor's adult supervisor, parent or family member's actions are deemed to be illegal, inhumane or unethical to livestock; the proper authorities will be notified for further investigation by those agencies for possible prosecution and/or civil penalties.

PROBATION

45. Any exhibitor found in violation of any rule may be placed on probation for one year or longer if State Fair management deems appropriate.

Judging

JUDGING

46. The judge(s) shall award first, second or third place, etc., according to merit and if without merit the judge shall make no award under any circumstances. This rule applies whether there are one or more entries in the class.

JUDGE/EXHIBITOR INFORMATION

47. No person shall act as a judge in any Division in which he/she or a member of his/her immediate family is an exhibitor, is in charge of an exhibit or division, in charge of a group of exhibitors, or is a member of a group of exhibitors.

JUDGE/FRATERNIZATION/CRITICISM

48. Judges should avoid unnecessary fraternization with exhibitors. No person shall be allowed, under any circumstances, to interfere with the judge, or judges, during their adjudications, or with the State Fair's staff, or to offer any criticism of any exhibit of another.

Violators of this rule shall be excluded immediately from the judging area and competition and be subject to such additional penalties, including cancellations of awards, as the State Fair management shall consider appropriate.

49. No exhibitor shall receive more than two cash awards in any one class. For this rule only, a husband, wife, and unmarried children (including foster children) under 18 years of age shall be considered as being one exhibitor, except that brothers and/or sisters shall be considered as being separate exhibitors in Junior Department classes.

This rule shall have no bearing on consideration in the placing of entries by judges. Ribbons shall be presented in the order of placing by the judges.

The management shall, however, pay third money to the fourth winner, etc., when the third winner is prohibited from receiving third cash award under the provisions of this rule. (Any entry or exhibit in which one or more members of the family described above has a financial interest shall be included in the limitation of not more than two cash awards per class.)

50. Management reserves the right to combine or to divide classes in a manner it deems necessary in order to assure adequate competition.

In the event of a show change, as a result of this rule, or where classes are established after the close of entries, premiums and awards will be distributed, divided or eliminated in a manner as deemed necessary by State Fair Management.

JUDGE'S DECISION

51. The judge's decision is final.
52. The judge's decision cannot be protested.

CHIEF JUDGE POLICY

53. A Chief Judge will be assigned by the State Fair, for still exhibits only, to mediate in the event there is a conflict during the judging process. All decisions of the Chief Judge shall be final and may not be protested.

PROTESTS

54. **For still exhibits and horse only** - Any protest must be submitted in writing and given to the State Fair's staff member responsible for the Competitive Program in question within 24 hours of the time of the cause of the protest.

Protests must be based on a violation of rules, and you must reference the rule in your protest. The judge's decisions on awards cannot be protested.

No protest shall be considered by the management unless accompanied by a deposit of \$300.00 (Cash, money order or certified check).

The deposit shall be forfeited if the protest is not upheld.

Protests shall be adjudicated by State Fair management.

State Fair management will consult with a member of the California State Fair Board of Directors who shall be designated by the Chairman of the Board.

The decision of State Fair Management shall be final and unappealable. See special livestock rules for protests in the Livestock Program.

55. Under no circumstances will any entry which has been previously judged be “rejudged” due to the disqualification or removal or another entry.

Awards

SPECIAL AWARDS

56. Special Awards contributed by businesses or individuals are offered in some California State Fair Competitive Programs. These Special Awards are the obligation of the contributor/donor. The California State Fair is not responsible for redemption of these awards.

TAX LAWS

57. It is the responsibility of the exhibitor to investigate and adhere to State and Federal tax laws/regulations regarding premiums paid, and awards received.

As an out-of-state payee who earns \$1500 or more, Cal Expo must withhold 7.5% for State taxes.

You may request an exemption or a reduction of this withholding by filling out and submitting the Nonresident Withholding Waiver Request, California Form 588.

PREMIUM AWARDS

58. Awards, ribbons, tags or cards have no value as payment. Premiums are paid only from the records of the judges’ sheets.
59. Premium checks will be issued as soon as auditing, drug testing, if applicable, and processing can be completed. If checks are not received by November 15, please phone or write the State Fair.
60. Checks must be **cashed within six months** of the date of issue.
61. Exhibitors have until December 31 of the same year, to claim checks returned to the State Fair. Checks will not be reissued after this date.

Age Requirements

JUNIOR EXHIBITORS MEMBERSHIP AGE AND AFFILIATION REQUIREMENTS

62. Organization affiliation requirements: If a Junior (youth) exhibitor has been a member of a junior organization for 60 days immediately prior to the opening date of the State Fair (May 13, 2024), and their project or entry was produced or conducted at any time during the year of 2024 under the supervision of the organization, the Junior must enter the divisions or classes designated for that organization.

If, however, the project or entry was not produced or conducted under the supervision of the organization, the Junior must enter as an Independent Junior for that project or entry.

Example: If a 4-H member wishes to enter a Market Lamb competition and the Youth Canning & Baking competition, in a situation where they are only enrolled in a 4-H Sheep project, the entry is as follows: Enter 4-H for the Market Lamb competition and Independent Junior for the Canning & Baking competition (even though the exhibitor is a 4-H member, the baked goods project was not produced or conducted under the supervision of the organization).

63. Non-designated “Junior” shows or divisions: If a show or division offered is not specified as 4-H or FFA, Junior exhibitors who are enrolled in a 4-H or FFA project relating to that show or division must still enter as members of their respective organizations and follow all applicable rules and regulations of the department.
64. All 4-H exhibitors must be 9 years old by December 31, 2023, and not be older than 19 years old as of December 31, 2023. Exhibitors must also meet age and membership requirements of their organizations when entering as a member of an organization. Exhibitors must also meet the ownership and all other requirements of the competition to be eligible for entry.
65. California Grange: California Grange youth shall be considered Independent Juniors for Livestock, Dairy, Small Animal and Still Exhibits.

INDEPENDENT JUNIOR AND GRANGE AGE REQUIREMENTS

(Rules 66-69 apply to Indoor non-animal Exhibits only.)

66. Independent Junior and Grange exhibitors may enter California State Fair classes and divisions in indoor (Still Exhibit) competitions if they are 5 years old as of January 1, 2024.
67. Independent exhibitors are eligible to compete/exhibit through December 31 of the year in which they turn 18 years of age.
68. Grange exhibitors are eligible to compete/exhibit through December 31 of the year in which they turn 19 years of age. Exhibitors must meet the ownership and all other requirements of the competition to be eligible for entry.
69. Independent Still Exhibit Exhibitors: Persons, who are “not” 4-H, FFA or Grange members may enter the Junior competitions provided they meet age requirements for youth exhibitors in the competition they are entering.

These Juniors are considered Independent Juniors and must enter Independent Junior classes or divisions when the classes or divisions are designated as such in the Indoor (Still Exhibits) Competitions.

Exhibitors who enter Independent of an organization must not be older than 18 years old as of January 1, 2024.

FFA AGE REQUIREMENTS

70. The first year of eligibility will be determined by the FFA advisor; however, the exhibitor must have graduated from the 8th grade as of July 1, 2024.

FFA requirements allow exhibitors to enter FFA classes through the year following the year in which they graduate from high school.

INDEPENDENT AND GRANGE ANIMAL EXHIBITORS

71. Persons who are “not” 4-H or FFA members may enter the Junior Livestock Show provided they meet age requirements for animal exhibitors at the State Fair.

These Independent and Grange exhibitors shall enter 4-H or FFA classes as follows:

- a. Independent and Grange Junior exhibitors who are 13 years of age or under (as of show day) shall compete in the appropriate 4-H divisions only.
- b. Independent and Grange Junior exhibitors who are 14 years of age (as of show day) or are incoming freshmen in high school shall be placed by State Fair Management in either 4-H or FFA divisions.
- c. Independent Junior exhibitors are eligible to enter 4-H or FFA Showmanship. Independent Juniors are not eligible for County or Chapter Groups or Outstanding Exhibitor.

MEMBER STANDING AND OWNERSHIP REQUIREMENTS

72. Juniors who are members of 4-H, FFA or Grange must be in good standing with their organization and projects entered as such must have been conducted under the supervision of the organization and must be owned by the exhibitor (unless otherwise stated).

ELIGIBILITY QUESTIONS

73. Any questions as to the eligibility of an entry shall be determined by the exhibitor’s advisor (for 4-H, FFA or Grange), instructor (for Student Showcase) or parent or guardian (for Independent Juniors). Notwithstanding the foregoing, the State Fair shall make the final

determination of eligibility in all cases.

4-H AGE REQUIREMENTS

74. The levels of membership for 4-H are aged based. Each level is defined as follows:
- a. **Primary Level:** Must be 5 years old as of December 31, 2023. Primary membership ends when members qualify as junior members. Exhibitors who are under nine years of age on or before December 31, 2023, are not eligible to compete in animal competitions at the California State Fair.
 - b. **Junior, Intermediate & Senior:** Must be 9 years old by December 31, 2023. Exhibitors are eligible to compete/exhibit through December 31 of the year in which they turn 19 years of age.
 - c. **Home Schooled Children:** Age criteria, as listed in 1 and 2, only will apply to home-schooled children. A grade level will not be a consideration. (Exhibitors who are under 9 years of age as of December 31, 2023, are not eligible to compete in animal competitions at the California State Fair.)

INDEPENDENT JUNIOR AND GRANGE AGE REQUIREMENTS

(This rule applies to Animal Exhibitors)

75. Independent Junior and Grange animal exhibitors must be 9 years old as of January 1, 2024, and are eligible to compete through December 31 of the year in which they turn 19 years of age. Independent Juniors and Grange exhibitors shall enter 4-H or FFA animal classes.

NO DUAL AFFILIATION IN COMPETITION

76. Under no circumstances may an exhibitor show the same species or project in more than one Division of the Junior Department.

ADULT SUPERVISION REQUIREMENT

77. All Junior exhibitors, required to be on the State Fairgrounds, must be accompanied and supervised by an adult while on the State Fairgrounds. Instructors, advisors, leaders and other adults in charge of Junior exhibitors shall be responsible for their conduct at all times.

FFA SUPERVISION REQUIREMENTS

78. All FFA exhibitors entered as such must be supervised by their agricultural instructor.

Any deviation from this rule must be taken up with the State Agriculture Education unit representative in charge.

The CATA Curricular Activities Code shall govern the conduct and eligibility of FFA exhibitors and their projects.

UNIFORMS

79. Uniform requirements for Independent youth shall be the same as required for 4-H and FFA members excluding insignia.

The official show uniform for animal exhibitors at the California State Fair will be white pants, trousers or dress and a white blouse or shirt.

80. No exhibit owned by a chapter or club, or conducted, as a joint project by two or more individuals is eligible in the Junior Department unless the division/class specifically states.

FREE SPEECH ACTIVITIES GUIDELINE

81. The California Exposition & State Fair (Cal Expo) hereby finds that these guidelines are intended to set forth in writing Cal Expo's long-standing policy governing the conduct of Cal Expo employees and exhibitors, as well as members of the public, under the First Amendment to the United States Constitution and Article I of the California Constitution, on Cal Expo's grounds.

These guidelines are not intended to enlarge upon nor create any rights guaranteed by existing law nor waive any defense or rights available to Cal Expo, nor do they represent any admission that the facilities of Cal Expo are open as a public forum.

It is the policy of Cal Expo to allow within the parameters set forth herein, reasonable access to its grounds and designated free speech expression zones for demonstrations for free speech activity as allowed by the First Amendment to the United States Constitution and Article I to the California Constitution.

For further information regarding Free Speech Activities at the California Exposition & State Fair please write to:

Chief of Police, California Exposition & State Fair

P.O. Box 15649, Sacramento, CA 95852

82. Should contractors, associations, clubs or individuals desire to arrange for beverages and food service, all such arrangements must be coordinated through Oak View Group Hospitality, the State's Master Food & Beverage Contractor. **No exceptions.**

Contractor shall be responsible for expenses related to these services if any. Alcoholic beverage service areas/facilities will only be allowed in designated locations. Only persons 21 years or older will be allowed to consume alcoholic beverages. Further, no alcoholic beverages may be brought onto the grounds. These products may only be acquired at OVG permitted locations on the grounds. Individuals that endanger themselves or others will be reported to authorities.

DEFINITIONS

The following definitions apply to this guide

American System of Judging: Each entry in a class is judged in comparison to the other entries in the class. Entries are placed first, second, third, etc. according to relative merit. There will be no more than one first, second, third, etc. per class.

Danish System of Judging: Each entry in a class is judged on its own merit. Entries are placed first, second, third, etc., depending on points received based on the score card. There may be more than one first, second, third, etc. per class.

Senior Departments: California Fine Art, California Crafts, Canning & Baking, Photography, Commercial Wine, Commercial Craft Brew, Home Brew, California Cheese, California Olive Oil, Open Livestock by species and Open Small Animals by species.

Junior Departments: Youth Canning & Baking, Student Showcase, Ag Mechanics, Junior Livestock by species and Junior Small Animals by species.

Senior/Open Exhibitor: An exhibitor who is no longer eligible to be a Junior Exhibitor or enter a Junior Department.

Junior Exhibitor: An exhibitor who is a member of 4-H, FFA, Grange, or an Independent Youth Exhibitor who meets the requirements of Independent Junior divisions offered. See the specific show and General Rules for exceptions to this definition.

Entry Office: The California State Fair Entry Office is located at 1600 Exposition Blvd., Sacramento. Contact may be made by phone, mail, email or personal contact. Questions regarding competitions may also be directed to the Entry Office. (916) 263-3149 - entryoffice@calexpo.com.

Still Exhibits: All competitive exhibits which are typically indoor and not involving animals, such as art, quilts, foods, crafts, sewing, metalwork, jewelry, graphics, drafting, sciences, etc.

Livestock & Small Animals: All competitive exhibits which animals are the entry; such as beef, sheep, swine, dairy cattle, goats, llamas, cavies, rabbits, poultry, dogs, etc.

Online Entry: Commitment to enter and abide by rules.

Detailed Receipt: An official form used in submitting an entry/exhibit in the

California State Fair. The Detailed Receipt is only required for Open and Junior Livestock, Small Animals, Best of Show and Ag Mechanic exhibitors.

Entry Fees: A fee charged to enter a competition. All entry fees must be paid online when entries are submitted.

Entry/Exhibit: Terms used to define the item entered in the competition or contest.

Entrant/Exhibitor: Terms used to define the person entering the competition.

Premium: A cash award is given to winners of the competition.

Department: Competition you wish to enter, i.e., California Crafts, Fine Art, Student Showcase, etc. which is comprised of similar shows.

Shows: Generalized sections of the competition.

Division: Categories within a show.

Class: Specific categories within a division.

Competition Guide: a printed or electronic (web) book, prospectus, or flyer which contains information for entry into the California State Fair competitions. Competition Guides can be a printed document or as an electronic document found on the California Exposition & State Fair website CalExpoStateFair.com.

Bona-fide Ownership of Exhibit - ownership is the state or fact of exclusive rights and control over property considered an entry or exhibit. This definition includes livestock, small animals, and horses although not limited to that type of property. Objects/products created or produced are also included as well as intellectual property. Proof of such ownership may be required by management.