

COMMERCIAL WINE

2024 COMPETITION GUIDE

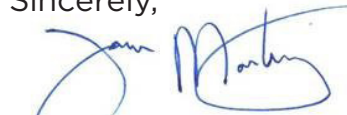
**It's your moment to shine!
Enter today.**

For more than 170 years the California State Fair has been a constant showcase of the talents and achievements of the people of California. Entering into the California State Fair's 2024 Competitive Exhibits Program allows you the opportunity to showcase your abilities, and revel in your accomplishments! The 2023 annual State Fair had competitive entries from all 58 counties in California.

The California State Fair's friendly competitions are designed to acknowledge the best of the Golden State. Our Competitive Programs inspire talented Californians, as well as highlight the latest advances in technology, agriculture, and industry.

More than 750,000 visitors are expected at the State Fair this summer. Your work is an integral part of the State's celebration, and we look forward to seeing your talents on display during the annual State Fair from July 12-28. We encourage you to enter today and begin making lasting memories for yourself, and for the hundreds of thousands of State Fair patrons!

Sincerely,



Tom Martinez

Chief Executive Officer

GOVERNOR

Gavin Newsom

CALIFORNIA STATE FAIR BOARD OF DIRECTORS

Chair, Che Salinas, Sacramento
Vice Chair, Hannah Gbeh, San Diego
Arturo Barajas, Sacramento
Rima Barkett, Stockton
Erin Choi, Sacramento
Sonney Chong, Sacramento
Rina V. Dimare, Clarksburg
David Mallel, Calabasas
Brian May, Sacramento

EX-OFFICIO MEMBERS

Senator Angelique Ashby
Assembly Member Kevin McCarty

CHIEF EXECUTIVE OFFICER

Tom Martinez

EXPO EVENTS ACCOUNT MANAGER

Sandi Hurtgen Montiero



OFFICE OF THE GOVERNOR

California Agriculture Fair Season

On behalf of the State of California, it is my pleasure to welcome you to the 2023 California Fair Season.

California fairs have a very important role in their communities. Every year, millions of people gather at fairgrounds throughout California to celebrate time-honored traditions that reflect the diversity of our state. Each fair takes great pride in showcasing their community through unique performances, events and exhibits.

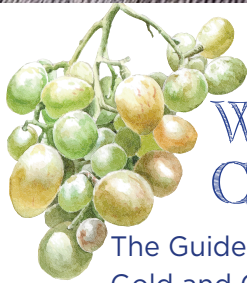
Livestock and other competitive exhibits demonstrate integral parts of agriculture that provide a link between the public and California's farmers and ranchers. By displaying local crops, crafts and livestock, fairs educate the community about our state's agricultural sector.

Thank you for your participation and dedication to our state and the agricultural community.

Sincerely,

A handwritten signature in black ink, appearing to read "Gavin Newsom", written over a horizontal line.

Gavin Newsom



Showcase your award winning Wine in the Guide to the Best of California Magazine!

The Guide to the Best of California Magazine showcases the Double Gold and Gold winning wine, craft beer, cheese and olive oil from the 2024 California State Fair competitions.

Showcase your award winning wine and reach wine enthusiasts eager to learn about the Best of California wines in one publication.

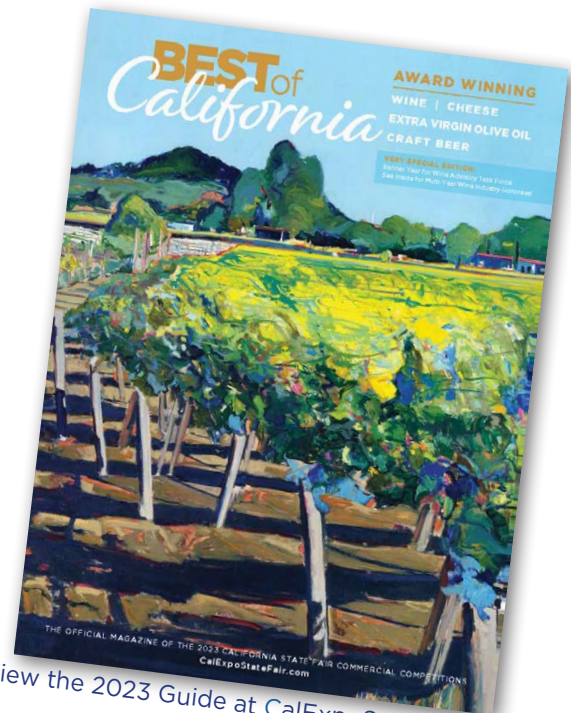
The guide is marketed as a resource all year long and is available on the official California State Fair website, shared on Facebook, Instagram, and X to over 220,000 followers, emailed to 100,000+ people, and 10,000 print magazines are distributed at high profile locations, and Farm-to-Fork events:

- ✿ Governor's Office and State Capitol
- ✿ California State Fair Wine Garden & Wine Experience Classes
- ✿ California State Fair Hot Spots
- ✿ Industry & Community Events

Ad spaces are available in the Guide to the Best of California Magazine starting at \$4,500.

Contact Event Partnership:

Brian Honebein
brian@eventpartnership.net
916.402.8313



View the 2023 Guide at CalExpoStateFair.com

TABLE OF CONTENTS

Important Information to Know.....	6
Contact	6
Entry Dates.....	6
Why Enter the Competition?	6
Competition Overview	7
Additional Information	8
How to Enter	8
Rules & Requirements	9
Eligibility Requirements.....	9
Minimum Quantity Requirements.....	10
Wine Delivery Time Frame	10
Entry Fee.....	10
Entry Limitations	10
Wine Label.....	11
Entry Form.....	11
Wines Remaining After Judging	11
Advertising	11
Enforcement of Rules	12
Delivery & Shipping.....	13
Judging	14
Integrity of the Competition	14
Judging Regions	14
Region A-North Coast Appellations	15
Region B - Sonoma Appellations.....	15
Region C - Napa Appellations.....	15
Region D - Greater Bay Appellations	16
Region E - North-Central Coast Appellations.....	16
Region F - South-Central Coast Appellations.....	16
Region G - South Coast Appellations	17
Region H - Sierra Foothills.....	17
Region I - Lodi Appellation	17
Region J - Other California Appellations	17
Region K - California (State) Appellation.....	18
Guidelines for Categories.....	18
Sweetness	18
Micro Wineries	18
Varietal Blends	19
Generic Wines	20

Categories.....	20
Categories & Classes.....	21
Dry White Wines	21
Red Table Wines.....	21
Rose & Blush Wines	22
Sparkling Wines.....	22
Fortified & Non-Fortified Dessert Wines.....	22
Sweet White Wines	22
California Brandies	23
Low Alcohol Wines (0.5 to 7% alcohol)	23
De-alcoholized Wines (Below 0.5% alcohol).....	23
Fruit & Berry Wines/Ciders	23
Vermouth & Other Flavored Wines	23
Micro Winery Wines.....	23
Awards	24
Awards Offered in Each Class.....	24
Award Seals.....	24
Awards to be Presented.....	25
Best of Show.....	25
Golden State Winery of the Year	25
Best of Region.....	26
Best of California.....	26
Best of Class of Appellation.....	26
Best Value Wine	26
Commercial Wine Judging Advisory Task Force.....	27
2023 General Rules	28
Exhibitors Entry Responsibilities.....	28
Still Exhibits.....	28
Livestock & Ag Mechanics.....	28
Entry Limit	29
Ownership of Entry	29
Exhibitor Liability	29
No Guarantee	30
Division/Class Cancellation	30
Entry Errors	30
Substitution	30
Previously Entered Entry.....	31
Verification	31
Responsibility	31
Removal of Entries	31
Dishonored Checks	31

Entry Fees.....	31
Late Entries	32
Design	32
Juniors Entering Senior Department.....	33
State Fair Employee Participation.....	34
Disqualification.....	34
Entry Disqualifications/Transfers.....	34
Disqualifications	34
Cooperation	35
Public Disturbances	36
Probation.....	36
Judging.....	36
Judging.....	36
Judge/Exhibitor Information.....	36
Judge/Fraternization/Criticism	36
Judge’s Decision	37
Chief Judge Policy.....	37
Protests.....	38
Awards	38
Special Awards	38
Tax Laws.....	38
Premium Awards.....	39
Age Requirements.....	39
Junior Exhibitors Membership Age and Affiliation Requirements.....	39
Independent Junior and Grange Age Requirements.....	40
FFA Age Requirements	40
Independent and Grange Animal Exhibitors.....	41
Member Standing and Ownership Requirements	41
Eligibility Questions	41
4-H Age Requirements.....	41
Independent Junior and Grange Age Requirements.....	42
No Dual Affiliation in Competition	42
Adult Supervision Requirement	42
FFA Supervision Requirement.....	42
Uniforms.....	42
Free Speech Activities Guideline	42
Definitions	44

IMPORTANT INFORMATION TO KNOW

Contact: Laura Laskowski
Wine Competition Coordinator
Phone: (916) 263-3159 & E-mail: wine@calexpo.com
Mobile: (916) 730-7629

Entry Dates:

February 5	Entries Open
March 11 - 29	Wine accepted in our temperature controlled warehouse. Warehouse hours: 9 AM - 4 PM Monday - Friday
March 29	Entries Close
April 17 - 19	Judging Dates
July 12	Opening Day, California State Fair

The California State Fair July 12 - 28, 2024

Showcasing the Best of the Best from all over the State!

- Winners get first priority to offer tastes of their award-winning wine to hundreds of thousands of visitors at the California State Fair in the 2024 Wine Garden.
- Best of Show winners are awarded and announced in our social media platforms.

Why enter the Competition?

Wine Judges are selected from respected winemakers, wine merchants, writers, promoters, and educators. Your entry fee entitles you to have your wines evaluated by these industry-leading professionals.

The California State Fair will be highlighting and celebrating the winners in press releases as well as showcasing them in all of our social media platforms. This year we will have the Top Winners individually highlighted on our website, as well as a link to your website!

COMPETITION OVERVIEW



The California State Fair Wine Competition has been an integral part of California's wine industry for 17 decades. Our mission is to guide the state's consumers, offer benchmarks for California's wineries and vineyards and encourage and stimulate the continued growth and improvement of the California wine industry at every level of the competition. This mission has been upheld and maintained throughout those 170 years.

Mountains, Oceans, Desert and Everything In-between

One of the competition's most important points is its emphasis on place. Wines are categorized by where the grapes are grown, not the site of the winery. The competition places a special emphasis on single vineyard wines.

It is the only competition to partition California into 11 wine regions and to recognize the best wines of each. It is also the only competition to designate best varietals and styles in California.

In addition, the California State Fair selects and recognizes:

- Best of Show Red Wine
- Best of Show White Wine
- Best of Show Sparkling Wine
- Best of Show Pink Wine
- Best of Show Dessert Wine
- Best of Show Micro Red Wine
- Best of Show Micro White Wine
- Best of Show Micro Other Wine
- Best Value Wine
- Golden State Winery of the Year

The State Fair Commercial Wine Competition holds a unique and important place in California's wine industry and its culture. Its significance comes from size, its esteemed panels of judges, reach and impact across the state and the country, and the demonstration by its judges through decades of a top standard of professionalism, excellence, and fairness. It is here that the industry, educators, journalists, and wine lovers in California and around the world can find a true assessment of the high quality of California wine.



Additional Information

This guide is produced in advance and is subject to any action that may cause revision or curtailment of classes, divisions, sections, awards, premiums or regulations as listed.

Mailing list and Notification: Although we try to keep mailing lists current, we cannot be held responsible for any winery that is not notified or contacted. Our deadline for accepting entries is March 29, 2024. Exceptions may be granted at the sole discretion of the California State Fair and will require a late fee.

How to Enter

1. Online Entry at www.enofileonline.com
2. Log in to your account or select “Register” to set up a new account. If you cannot remember your login, contact enofile.
3. Register your wines.
4. We would like you to send a current wine label for each entry, or download (preferred method) online.
5. Ship or deliver your entry with a copy of your online receipt or with payment and entry form. See Delivery and Shipping Requirements. (page 13)
If you have any questions, please contact Laura Laskowski:
California State Fair - Commercial Wine Competition
P. O. Box 15649, Sacramento, California 95852
(916) 263-3159; wine@calexpo.com
6. SPECIAL NOTE: Please ensure that your contact information in Enofile is current. This is critical so we can contact you during and after the competition for urgent matters relating to your submissions and awards.

RULES & REQUIREMENTS

Our goal is to make registration easier and faster for everyone, and we encourage all entrants to use the online option. Entry and details at CalExpoStateFair.com/competitions, scroll down and click on the Commercial Wine icon on the competitions page. Following is the QR code to the competitions page.



Eligibility Requirements

1. Any grape or fruit product grown in California and processed in a bonded wine premises is eligible for entry. Types of products include: wine, brandy, port, sherry, low alcohol wine, de-alcoholized wine or vermouth. Products made in other states are eligible if 75 percent or more of the product is from grapes or fruit grown in California.
2. An official entry shall consist of one of the following:
 - a. Six 750 ml bottles
 - b. Six 1L bottles or boxes
 - c. Six 1.5L bottles or boxes
 - d. Nine bottles or cans less than 750ml (i.e. 375 ml, 500ml, etc)
 - e. Three 3L boxes
 - f. One, Two or Three 5L box(es) (Contact Coordinator for Assistance if needed)
 - g. For categories 195, 295, 695 (micro wineries), 701-705, and 901-941, please send three 750 ml bottles or four 375 ml bottles.
3. If the wine has not been produced by the entering winery, the entrant must have performed at least one of the following processes, or have contracted for it to be done at a bonded facility:
 - a. Grown the grapes
 - b. Crushed the grapes
 - c. Fermentation
 - d. Blending
 - e. Cellar treatment
 - f. Cellar aging
 - g. Bottling

This is to allow the inclusion of negociant wines, or wines bottled to the account of the grape grower.

Minimum Quantity Requirements

1. The wine entered must be part of a single lot of at least 300 gallons of identically finished wine (approximately 125 9L cases). The only exceptions are the microwinery classes 195, 295, and 695 (see pages 19 and 20).
2. A minimum quantity of 240 gallons (approximately 100 9L cases) must be available for sale to the public either at the winery or through normal licensed wholesale/retail distribution channels through the closing day of the California State Fair, July 28, 2024. The only exceptions are the microwinery classes 195, 295, and 695 (see pages 19 and 20).
3. All entering wineries must reserve and hold until July 1, 2024, a minimum of 10 cases of each Double Gold and Gold medal winning wines for the use at the 2024 Wine Garden.
4. The winery must sell the wine to this designated party at a normal wholesale price. The only exceptions are the microwinery classes 195, 295, 695 (see pages 19 and 20), and 701, 702, 703, 704, and 705.

Wine Delivery Time Frame

The first-day wines will be accepted in the cellar is Monday, March 11, 2024. Entries close on Friday, March 29, 2024, at 4:00 p.m. PLEASE INSTRUCT YOUR SHIPPER TO DELIVER NO LATER THAN 4PM.

Entry Fee

The fee is \$75.00 per individual wine and must accompany every entry. Entry fees are not refundable. Pay online or make check payable to California State Fair. A penalty of \$25 will be assessed if a check is refused by the bank.

PLEASE PAY AT SUBMISSION OR PROMPTLY THEREAFTER TO AVOID WITHDRAWALS ON THE LAST DAY TO RECEIVE WINES.

Entry Limitations

1. There is no limit on the number of regions, categories, or classes a winery may enter.
2. No entrant will be permitted to enter more than three wines of the same varietal in a single class within a single region (i.e., a maximum of three merlots, three Chardonnays, etc. per region) unless the wine is vineyard designated or a different vintage or bears a different fanciful name. There is no limit on an entrant on the number of single vineyard wines within a class or region.
3. No wine may be entered more than once by an entrant even if it is marketed under different labels.

Wine Label

We would like a wine label for each entry. You may download (preferred method) a bottle label at www.enofileonline.com or include one with your shipment (a photocopy is acceptable).

Entry Form

The online entry form must be complete in every detail, including retail price per bottle, exact percentage of residual sugar (Only express RS in percentage), alcohol, release date (month and year), gallons produced, vintage date, the region, class code, vineyard designation (if any), estate bottled (only if specified on the label) and the county location of the winery.

The California State Fair is not responsible for errors on entry forms or misinformation supplied by winery personnel or their designated representatives. Although we take every precaution to locate mistakes, we are not responsible for correcting errors. An incomplete entry form may be disqualified and the entry fee forfeited at the sole discretion of the California State Fair.

The State Fair may withhold awards for entries that are ineligible or have been disqualified and may recover awards that have been made for ineligible or disqualified entries that are disclosed during post-audits of Fair records. Wine may be disqualified for any errors on the entry form, including being tasted in the wrong region, varietal category, minimum amounts available for sale, etc.

Entrants may request reconsideration of a disqualification and should inform Fair management immediately, in writing, giving their name, address, complete description of the entry and the reason for requesting reconsideration. Requests will not be considered later than ninety (90) days after the entrant received notice of the disqualification. Reconsideration of a disqualification may be granted at the sole discretion of the State Fair.

Wines Remaining After Judging

Wineries or their representative may pick up any wines not receiving an award on Sunday, April 28, 2024. Wineries must notify the Wine Competition Coordinator in writing no later than Friday, April 12, 2024, of their intention to do so. (An email is an acceptable request.)

Advertising

The California State Fair reserves the right to revoke an award or disqualify an entrant from this and future competitions for any misleading advertising or information connected to the State Fair Wine Competition or for violating any of the following rules:

1. No representation will be made that is misleading or deceptive to the

- trade or the consuming public.
2. No misleading advertising or labeling will be allowed with any connection to any State Fair Wine Competition award.
 3. No representation will be made that states, implies, or permits the inference that wine is identical to an award winner unless this is the case.
 4. If a wine is a counterpart of an award-winning wine, any reference or allusion to awards will clearly avoid creating any impression that the wine so labeled and advertised is an award winner or a counterpart thereof.
 5. No entrant or representative may disparage awards of other wines to the trade or public.

Enforcement of Rules

The entry requirements, as printed herein, will be strictly enforced. Any entries found not to comply with the entry requirements will be rejected. Any entry form found to contain untrue information may result in the winery being disqualified from all awards and may also bar the winery from entering the State Fair Commercial Wine Competition in future years.

By submitting your wines online through www.enofileonline.com, an entrant certifies and promises that the information is accurate and that the entries meet all of the eligibility provisions, requirements, and limitations. It also certifies that the entrant agrees to abide by all rules and regulations of the State Fair Commercial Wine Competition.

The State Fair may, at its option, require that any wine receiving an award be certified by the Chief Judge who shall satisfy himself or herself that all entry requirements have been met, including the minimum amounts available for sale to the public.

The State Fair will check and verify the accuracy and validity of each entry. This information will be verified by authorized state representatives through selective on-site inspections on a random basis, or if there is any cause for concern by the state, by the Chief Judge, or by a California State Fair Wine Advisory Task Force member.

The State Fair may, at its option, require that any wine winning Best of Show, or other high awards be tested at a qualified lab to certify that it meets within a reasonable range the information stated on the entry form, or that it is identical to the wine that is for sale to the public.

DELIVERY & SHIPPING

NEW: Wines must arrive between Monday, March 11 and Friday, March 29, 2024. Receiving times are from 9 a.m. to 4 p.m. Monday through Friday.

PLEASE INSTRUCT YOUR SHIPPER TO DELIVER NO LATER THAN 4PM. No deliveries will be accepted on Saturdays, Sundays or holidays.

The State Fair may refuse any entries that arrive after Friday, March 29, 2024.

The entering winery is responsible for all shipping costs of their wines. The State Fair will not accept wine on a C.O.D. basis.

Please mark multiple box shipments with box numbers and total boxes shipped (For example: Box 1 of 4, Box 2 of 4, etc.). Make sure that the wines on the entry form are the same wines you are shipping.

Shipping & Delivery

Address All wines & checks sent via courier (FedEx, UPS, etc.) to:
California State Fair
Attn: Commercial Wine Competition
Ethan and Hurley, Gate 12
Expo Center #6
1600 Exposition Blvd.
Sacramento, CA 95815

Checks & Correspondence

sent via US Mail and Address to:
California State Fair
Wine Competition Coordinator
P.O. Box 15649
Sacramento, CA 95852

Only the Wine Competition Coordinator, Chief Judge or their designated appointee are authorized to receive entries. No other State Fairground location or State Fair representative is authorized to receive wine entries.

JUDGING

Integrity of the Competition

The California State Fair Wine Competition is double blind. Safeguards are in place to maintain the integrity of the competition, ensuring the identity of the wines being judged remains confidential.

The California State Fair Commercial Wine Competition recruits expert judges from the fields of wine education, winemaking, wine writing, wine marketing and wine service.

Historically, the California State Fair has applied a qualifying test to help assure the astuteness of its judges' palates. Toward that end, the Advanced Tasting Seminar created and offered by the University of California, UC Davis Extension Service is available annually for persons who want to refine their palates and join the competition circuit. Persons who complete and pass the one-day examination may be added to the pool of potential judges for the California State Fair.

The California State Fair Commercial Wine Competition has a long history of embracing and celebrating the full spectrum of wines and recognizing commonly overlooked regions.

Judging Regions

All wines will be entered based on the source of the grapes (Viticultural area, County or State) used in making the wine, not the location of the winery or negociant. In order for the wine to qualify in any region, the label must designate the appellation of the grapes in accordance with TTB regulations.

However, in regions that cross viticultural areas, the wine will be entered in the geographical site of the physical winery, unless specified by the entering winery.

The broadest appellation allowed will be California. This is meant to exclude an appellation entitled American.

Classes 100 through 695 will be judged in whichever of the 11 regions, A through K that applies.

Classes 701 to 941 will only be judged under Region K.

Please use the following regional identification for each entry.

Region A - North Coast Appellations

North Coast

Humboldt County

- Willow Creek (Humboldt)

Lake County

- Benmore Valley
- Big Valley District
- Clear Lake
- Guenoc Valley
- High Valley
- Kelsey Bench
- Red Hills
- Upper Lake Valley

Mendocino County

- Anderson Valley
- Cole Ranch
- Covelo
- Dos Rios
- Eagle Peak
- McDowell Valley
- Mendocino
- Mendocino Ridge
- Pine Mountain-Cloverdale Peak (Mendocino)
- Potter Valley
- Redwood Valley
- Yorkville Highlands

Marin County

- Petaluma Gap
- Sonoma Coast (Marin)

Solano County

- Clarksburg (Solano)
- Green Valley (Solano)
- Suisun Valley
- Wild Horse Valley (Solano)

Trinity County

- Trinity Lakes
- Willow Creek (Trinity)

Region B - Sonoma Appellations

Sonoma County

- Alexander Valley
- Bennett Valley
- Chalk Hill
- Dry Creek Valley
- Fort Ross-Seaview
- Fountaingrove District
- Green Valley of Russian River Valley
- Knights Valley
- Los Carneros (Sonoma)
- Moon Mountain District
- Northern Sonoma
- Petaluma Gap
- Pine Mountain-Cloverdale Peak (Sonoma)
- Rockpile
- Russian River Valley
- Sonoma Coast (Sonoma)
- Sonoma Mountain
- Sonoma Valley
- West Sonoma Coast

Region C - Napa Appellations

Napa County

- Atlas Peak
- Calistoga
- Chiles Valley
- Coombsville
- Diamond Mountain District
- Howell Mountain
- Los Carneros (Napa)
- Mt. Veeder
- Napa Valley
- Oak Knoll District
- Oakville
- Rutherford
- Spring Mountain District
- St Helena
- Stags Leap District
- Wild Horse Valley (Napa)
- Yountville

Region D - Greater Bay Appellations

Central Coast

San Francisco Bay

Alameda County

- Livermore Valley
- San Francisco Bay
- Santa Clara Valley

Contra Costa County

- Lamorinda
- San Francisco Bay

San Francisco County

- San Francisco Bay

San Mateo County

- Santa Cruz Mountains
- San Francisco Bay

Santa Clara County

- San Francisco Bay
- San Ysidro District
- Santa Clara Valley
- Santa Cruz Mountains

Santa Cruz County

- Ben Lomond Mountain
- Santa Cruz Mountains

Region E - North-Central Coast Appellations

Central Coast

Monterey County

- Arroyo Seco
- Carmel Valley
- Chalone (Monterey)
- Gabilan Mountains
- Hames Valley
- Monterey
- San Antonio Valley
- San Bernabe
- San Lucas
- Santa Lucia Highlands
- Gabilan Mountains

San Benito County

- Chalone (San Benito)
- Cienega Valley
- Gabilan Mountains
- Lime Kiln Valley
- Mt. Harlan
- Pacheco Pass
- Paicines
- San Benito
- San Francisco Bay
- Santa Clara Valley

Region F - South-Central Coast Appellations

Central Coast

San Luis Obispo County

- Adelaida District
- Arroyo Grande Valley
- Creston District
- Edna Valley
- El Pomar District
- Paso Robles
- Paso Robles Estrella District
- Paso Robles Geneseo District
- Paso Robles Highlands District
- Paso Robles Willow Creek District
- San Juan Creek
- San Luis Obispo Coast
- San Miguel District
- Santa Margarita Ranch
- Santa Maria Valley (San Luis Obispo)
- Templeton Gap District
- York Mountain

Santa Barbara County

- Ballard Canyon
- Happy Canyon of Santa Barbara
- Los Olivos District
- Santa Maria Valley (Santa Barbara)
- Santa Rita Hills
- Santa Ynez Valley

Region G - South Coast Appellations

South Coast

Los Angeles County

- Antelope Valley of the California High Desert (Los Angeles)
- Leona Valley
- Malibu Coast
- Malibu - Newton Canyon
- Saddle Rock-Malibu
- Sierra Pelona Valley

Orange County

Riverside County

- Temecula Valley
- Cucamonga Valley (Riverside)

San Bernardino County

- Cucamonga Valley (San Bernardino)

San Diego County

- Ramona Valley
- San Pasqual Valley

Ventura County

- Malibu Coast

Region H - Sierra Foothills Appellations

Sierra Foothills

Amador County

- California Shenandoah Valley (Amador)
- Fiddletown

Calaveras County

El Dorado County

- California Shenandoah Valley (El Dorado)
- El Dorado
- Fair Play

Mariposa County

Nevada County

Placer County

Tuolumne County

Yuba County

- North Yuba

Region I - Lodi Appellation

Sacramento County

- Alta Mesa
- Borden Ranch
- Clarksburg (Sacramento)
- Cosumnes River (Sacramento)
- Jahant (Sacramento)
- Lodi (Sacramento)
- Sloughouse

San Joaquin County

- Borden Ranch
- Clements Hills
- Cosumnes River (San Joaquin)
- Jahant (San Joaquin)
- Lodi (San Joaquin)
- Mokelumne River
- River Junction (San Joaquin)
- Tracy Hills

Region J - Other California Appellations

Excluding California (State) Appellation

Butte County

Colusa County

Fresno County

- Madera (Fresno)
- Squaw Valley- Miramonte

Glenn County

Kern County

- Antelope Valley of the California High Desert (Kern)
- Tehachapi - Cummings Valley

Kings County

Madera County

- Madera (Madera)

Merced County

Shasta County

- Inwood Valley
- Manton Valley

Siskiyou County

- Seiad Valley

Stanislaus County

- Diablo Grande
- Paulsell Valley
- River Junction (Stanislaus)
- Salado Creek
- Tracy Hills

Sutter County

Tehama County

- Manton Valley

Tulare County

Yolo County

- Capay Valley
- Clarksburg (Yolo)
- Dunnigan Hills
- Merritt Island

Region K - California (State) Appellation

All classes that are appropriate will be judged in Region K. Classes 701 to 941 will only be judged in Region K. All other approved counties and viticultural areas not listed above will also be judged in Region K.

GUIDELINES FOR CATEGORIES

Sweetness (Still Wines)

For entries customarily made in a wide range of sweetness styles – Riesling, Gewurztraminer, Viognier, Moscato - Winemakers should enter their wines in the classes which most accurately represent the r.s levels as stated in the class description.

The State Fair also asks winemakers to use their discretion in choosing the fairest and most appropriate class regarding the level of sweetness of Table Wine varietals and blends.

Sparkling wine categories include specific residual sugar levels.

Micro Wineries

The California State Fair understands that there are many small or micro-wineries in California producing incredible wines that are unable to reach the larger marketplace.

These Micro-Winery classes are meant to include them in the competition.

To qualify as a micro-winery, a winery cannot exceed the following production maximums:

1. 2,526 9L cases (approximately 6,000 gallons) of total wine production in one season, and
2. 1,052 9L cases (approximately 2,500 gallons) of the entered wine.
 - 195 Micro Winery White Wines
 - 295 Micro Winery Red Wines
 - 695 Micro Winery All Other Wines

Wines entered in these classes will be eligible for Gold, Silver, and Bronze medals, and for Best Micro Winery Red, White and Other.

Micro Winery entries must follow all the rules of the California State Fair Commercial Wine Competition except for the following:

3. Wineries need only send (3) 750 ml bottles or (4) 375 ml bottles of the entered wine.
4. Micro Wineries need not meet the Minimum Production Requirement.
5. No minimum amount of wine needs to be reserved for sale to the public
6. Micro Wineries need not reserve 10 cases of Gold medal winning wine to be purchased by the State Fair's representative to pour during the California State Fair.

Any winery qualifying as a Micro Winery is free to enter any larger classifications it feels appropriate, but will then be subject to all of the minimum production and sales requirements.

Varietal Blends

The following requirements apply to classes 170, 172, 260, 262, 264, 266, 305 and 676:

1. Wines entered into any of these categories must have the grape varieties or an acceptable alternative term stated on the label or entry form (such as Meritage, Claret, Bordeaux style, Rhone, Italian, etc.).

The following requirements apply to classes 174, 266, 305 and 676:

1. Wines without grape varieties or acceptable alternative listed on the label or entry form must be entered under categories that state "Other Varietal Blend".
2. Listing of the grape varieties on the entry form but not on the label is acceptable.

3. For classes 170, 172, 260, 262 and 264, entries must be made from at least two of the grape varietals in each category (see specific classes for lists of varietals).

Categories

1. Classes 701 to 941 will all be judged in Region K, California State Appellation, and wines in these classes will be eligible for Gold, Silver, and Bronze medals, but will not be eligible for Best of Class of Appellation, Best of Region, Best of California or Best of Show awards. These wines are not required to meet minimum production or minimum availability requirements. Only three 750 ml bottles or four 375 ml bottles are required for entry.
2. The Chief Judge reserves the right to combine classes when the number of entries warrants, or to divide classes if the range of sweetness or other factors warrants.

CATEGORIES & CLASSES

DRY WHITE WINES

- 100 Chardonnay
- 110 Sauvignon Blanc
- 115 Semillon (includes Chevrier)
- 120 Pinot Blanc
- 122 Roussanne
- 125 Viognier, Dry 0 - .90% rs
- 126 Viognier, Medium Dry .91 - 2% rs
- 127 Pinot Gris, Pinot Grigio
- 130 Chenin Blanc, Dry
- 135 Albariño
- 140 Gewurztraminer, Dry 0 - .90% rs
- 141 Gewurztraminer, Medium Dry .91 - 2% rs
- 150 Riesling, Dry 0-.90% rs
- 151 Riesling, Medium Dry .91 - 2.0% rs
- 155 Muscat, Dry 0 - .90% rs
- 156 Muscat, Medium Dry .91 - 2% rs
- 160 Other white varietals not otherwise listed, Dry 0 - .90% rs
- 161 Other white varietals not otherwise listed, Medium - Dry .91 - 2.0% rs
- 170 Bordeaux White Varietal Blends (including Meritage): Must include two or more of the following varietals: Colombard, Merlot Blanc, Muscadelle, Sauvignon Blanc, Sauvignon Vert, Semillon, Ugni Blanc (may include up to 10% other varietals for blending purpose)
- 172 Rhone White Varietal Blends: Must include two or more of the following varietals: Aligote, Bourboulenc, Clairette Blanche, Grenache Blanc, Marsanne, Picordan, Picpoul Blanc, Rolle, Roussanne, Ugni Blanc, Viognier

(may include up to 10% of total volume other varietals for blending purpose)

- 174 Other Dry White Varietal Blends

RED TABLE WINES

- 205 Nouveau, all types
- 210 Pinot Noir
- 213 Primitivo
- 215 Zinfandel
- 218 Malbec
- 220 Merlot
- 222 Cabernet Franc
- 224 Cabernet Sauvignon
- 230 Sangiovese
- 232 Carignane
- 234 Mourvedre/Mataro
- 236 Tempranillo
- 238 Barbera
- 240 Petite Sirah
- 242 Syrah/Shiraz
- 244 Grenache
- 250 Other Red Varietals (not listed above and not blends)
- 260 Bordeaux Red Varietal Blends (including Meritage): Must include two or more of the following varietals: Bequignol, Cabernet Franc, Cabernet Sauvignon, Carmenere, Malbec, Merlot, Petit Verdot, Prolongeau (may include up to 10% of total volume other varietals for blending purpose)
- 262 Rhone Red Varietal Blends: Must include two or more of the following varietals:

- Carignan, Cinsault, Counoise, Grenache Noir, Mourvedre, Muscardin, Petite Sirah, Picpoul Noir, Syrah, Terret Noir, Vacciarese (may include up to 10% of total volume other varietals for blending purpose)
- 264 Italian Red Varietal Blends: Must include two or more Italian varietals OR at least 50% of one of the Italian varietals: Aglianico, Barbera, Carignan, Dolcetto, Freisa, Grignolino, Lagrien, Montepulciano, Nebbiolo, Primitivo, Refosco, Sangiovese, Teroldego, Zinfandel or other Italian varietals.

266 Other Red Varietal Blends

ROSE & BLUSH WINES

- 300 Varietal Rosé, or Blush
 305 Varietal Rosé or Blush Blends
 330 White Zinfandel

SPARKLING WINES

- 400 Charmat Fermented Sparkling wine (Blanc de Blancs, Blanc de Noirs, etc.)
 400a Natural, no dosage
 400b Brut, up to 1.5% rs
 400c Extra Dry, 1.51 to 3% rs
 400d Sweet, 3.1% and above rs
- Rosé, Pink, & Sparkling Red
 400e Natural, no dosage
 400f Brut, up to 1.5% rs
 400g Extra Dry, 1.51 to 3% rs
 400h Sweet, 3.1% and above rs
 400i Charmat Fermented Rose Pink and Sparkling Red - extra dry 1.51 - 3% rs with fruit flavor
 400j Charmat Fermented Sparkling Wine - sweet 3.1 and above rs with fruit flavor
- 450 Bottle Fermented Sparkling wine (Blanc de Blancs,

- Blanc de Noirs, etc.)
 450a Natural, no dosage
 450b Brut, up to 1.5% rs
 450c Extra Dry, 1.51 to 3% rs
 450d Sweet, 3.1% and above rs
- Rosé, Pink, and Sparkling Red
 450e Natural, no dosage
 450f Brut, up to 1.5% rs
 450g Extra Dry, 1.51 to 3% rs
 450h Sweet, 3.1% and above rs

FORTIFIED & NON-FORTIFIED DESSERT WINES

- 500 Traditional (requiring Portuguese varieties and brandy addition to arrest fermentation)
 500a Vintage dated
 500b Non-Vintage dated
- 510 Sherry
 510a Sherry, dry
 510b Sherry, medium
 510c Sherry, sweet
- 520 Non-Traditional
 520a Varietal fortified dessert wine (specific grape or grapes named)
 520b Flavored fortified dessert wine
 520c Other Misc. fortified dessert wine
- 530 Natural Non-fortified dessert and sweet red wines (includes Late Harvest)

SWEET WHITE WINES

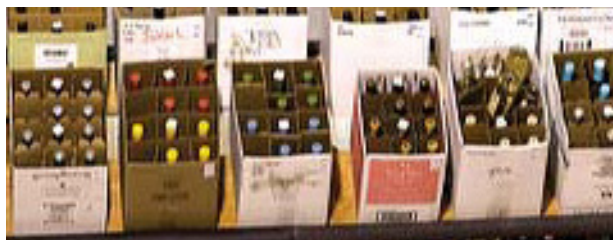
- 610 Chenin Blanc, Sweet
 615 Viognier, Medium Sweet 2.1-4% rs
 616 Viognier, Sweet/Late-Harvest ≥4.1% rs
 620 Riesling, Medium Sweet 2.1-4% rs
 630 Riesling, Sweet/Late-Harvest ≥4.1% rs
 640 Gewurztraminer, Medium Sweet 2.1 - 4% rs

- 650 Gewurztraminer, Sweet/
Late-Harvest $\geq 4.1\%$ rs
- 660 Muscat, Medium Sweet 2.1-4% rs
- 661 Muscat, Sweet/Late-Harvest
 $\geq 4.1\%$ rs
- 670 Semillon or Sauvignon Blanc or
Blends (including Late Harvest)
- 672 Other white varietals not
otherwise listed, Medium Sweet
2.1 - 4% rs
- 674 Other white varietals not
otherwise listed, Sweet/
Late-Harvest $\geq 4.1\%$ rs
- 676 Other White Varietal Blends -
Medium Sweet
- 678 Other White Varietal Blends -
Sweet

Other Classes (701 to 941)
These wines will all be judged in
Region K, California State Appellation,
and will be eligible for Gold, Silver and
Bronze medals, but will not be eligible
for Best of Class, Best of Region, Best
of California or Best of Show awards.
Only three 750 ml bottles or four
375 ml bottles are required for entry.

CALIFORNIA BRANDIES

- 701 Straight (Unrectified)
- 702 Blended (Rectified)
- 703 Grappa, Marc and/or Immature
Brandy
- 704 Alambic Brandy (may be
rectified)
- 705 Fruit Brandies or Eau de Vie



LOW ALCOHOL WINES (0.5 TO 7 % ALCOHOL)

- 901 White
- 902 Rosé or Blush
- 903 Sparkling
- 904 Red

DE-ALCOHOLIZED WINES (BELOW 0.5 % ALCOHOL)

- 910 White
- 911 Rosé or Blush
- 912 Sparkling
- 913 Red

FRUIT & BERRY WINES

- 924 Berry Wines
- 925 Fortified Fruit Wines
- 926 Grape Wine with Fruit Juice or
Flavor, including Sangria
- 927 Honey Wines (Meads)

VERMOUTH & OTHER FLAVORED WINES

- 940 Vermouth (Sweet, Dry,
White, Red)
- 941 Other flavored Wines

MICRO WINERY WINES

(see guide on pages 19 and 20 for
qualifications)

- 195 Micro Winery White Wines
- 295 Micro Winery Red Wines
- 695 Micro Winery All Other Wines

AWARDS

Awards Offered in Each Class

Awards will be given to winners within each varietal or style. The Double Gold award is reserved for wines receiving a unanimous vote for Gold by a panel of judges.

Also, wines will be given the following numeric scores in the following ranges:

Double Gold Award	98-100 points
Gold Award	94-97 points
Silver Award	88-93 points
Bronze Award	83-87 points

Should you be awarded a Bronze, Silver, Gold, and/or Double Gold award for your entries, you may choose any of the following forms of recognition:

OPTION 1: You may order the traditional award ribbon/rosette for the award your entry received. One award per entry.

(There is no charge for this award.)

OPTION 2: Choose an electronic version of an award-winning medal to use for digital marketing.

(There is no charge for this award.)

OPTION 3: You may purchase award stickers at a nominal cost for application to your product.

IMPORTANT, PLEASE NOTE:

Following the competition, you will receive an award letter with an order form attached.

If you want a physical or digital award you must submit this order form by the date indicated on the email. Requested Awards will be mailed in August.

Award Seals

The California State Fair will make official award seals in the form of stickers available to purchase for any award-winning wines. These award stickers may be affixed only to bottles of State Fair award-winning wines. Only official Fair award seals/stickers are authorized to designate California State Fair award-winning wines.

Awards To Be Presented

Best of Show Red	Rosette and Large Golden Bear Trophy
Best of Show White.....	Rosette and Large Golden Bear Trophy
Best of Show Sparkling Wine	Rosette and Small Golden Bear Trophy
Best of Show Pink Wine	Rosette and Small Golden Bear Trophy
Best of Show Dessert Wine	Rosette and Small Golden Bear Trophy
Golden State Winery of the Year Award.....	Large Golden Bear Trophy
Best Micro Winery Red Wine	Rosette and Plaque
Best Micro Winery White Wine	Rosette and Plaque
Best Micro Winery Other Wine.....	Rosette and Plaque
Best Value Wine	Rosette and Plaque
Best of Region.....	Rosette and Plaque
Best of California.....	Rosette and Plaque

Best of Show

A Best of Show Red, White, Pink, Dessert, and Sparkling Wine will be chosen. Best of Show is the highest award given by the State Fair Commercial Wine Competition. The acclamation method will be used to determine the Best of Show wines. No matter how many wines are in a round, each judge may vote for as many or as few wines as he or she wants. The winning wine is the entry receiving the most votes.

Golden State Winery of the Year

The Golden State Winery of the Year Award is given to the winery that demonstrates consistent excellence based on the number, quality, and percentage of award-winning wines. At least ten wines must be entered by a winery to be eligible for this award, which will be based on a combination of these calculations.

Part 1: The number and rank of Double Gold, Gold, Silver, Bronze, Best of Class of Appellation, Best of California, Best of Region and Best of Show awards won by the winery's top 10 scoring wines.

Part 2: The percentage of entered wines by a winery that wins awards.

For the purposes of this award, a winery is defined as a single wine brand, or a label consumers recognize as a single producer. Any requests for clarification of this classification will be addressed by the Chief Judge and the Competition Coordinator.

Best of Region

Judges will be divided into panels, each tasting the qualified wines from one of the 11 regions. Judges will vote to choose a Best of Region Red Wine and Best of Region White Wine. Judges will not know which region they are judging.

Best of California

All qualified varietals and styles will compete for the Best of California awards. These categories are subject to change each year based on the sole discretion of the Chief Judge, who will consider, among other factors, the number of wines entered in each class. A class must have a minimum of 25 entries.

Best Value Wine

The Best Value Wine Award is given to the wine that wins the highest award for the most value-priced wine in relation to other wines priced in that category. Example: A \$10 Meritage winning a Double Gold and Best of California award, having been judged against all other Bordeaux Blends ranging as high as \$75 and averaging over \$40, would receive the Best Value Wine Award.

COMMERCIAL WINE JUDGING ADVISORY TASK FORCE

Brad Alderson
Winery Consultant

Tom Bender
Wine Educator Columbia College
Retail Wine Specialist Modesto

Mark Chandler
Principal,
Burlington Chandler Wines

Rina DiMare
Proprietor
Elevation Ten Winery
California State Fair Board Member

Patrick Dodd
Proprietor
The Wine Dodd Consulting

Mike Dunne
Contributing Wine Columnist
The Sacramento Bee

Scott Harvey
Scott Harvey and Associates

Jason Brandt Lewis
Consultant/Wine Writer

Carol Shelton
Co-Owner
Carol Shelton Wines

2024 GENERAL RULES

California Exposition & State Fair

General Rules are subject to any action that may cause revision or curtailment at any time before each competition or judging. Upon submission of online entry and signature on detailed receipt if applicable, the exhibitor acknowledges that they have read and understood these rules and all others of the competition in which they enter. Furthermore, exhibitors are responsible for viewing, reading and understanding all revisions or curtailments on the State Fair's website before the competition. Exhibitors may request an additional copy of the most current rules by contacting the entry office: email: entryoffice@calexpo.com.

Exhibitors Entry Responsibilities

STILL EXHIBITS

1. All submissions and information necessary to determine that the exhibit is eligible must be submitted online, uploaded if necessary, and entry fees paid by Visa or MasterCard by the entry deadline.

It shall be the responsibility of the exhibitors to correct all deficiencies in connection with entries or exhibiting which are required of them by the rules printed in the Competition Guide.

Entries will not be judged if deficiencies have not been cleared or fees paid.

LIVESTOCK & AG MECHANICS

2. All signatures and information necessary to determine that the exhibit is eligible must be submitted online for Junior Livestock, Open Livestock, Ag Mechanics, Best of Show and Small Animals.

All Livestock, Small Animal, Best of Show and Ag Mechanics exhibitors will be required to submit a Detailed Receipt with all required signatures within one week of the entry deadline.

It shall be the responsibility of the exhibitor to correct all deficiencies in connection with entries or exhibiting which are required of them by the rules printed in the Competition Guide.

A deficiency penalty of \$20 per entry must be paid for any deficiency or fees which have not been paid by July 1 for Livestock and Small Animals, this includes not returning the detailed receipt by the due date.

Entries will not be judged if the detailed receipt is not received.

This rule shall apply to all equine shows with a requirement for their fees, forms, and signatures being submitted by the entry deadline date within each equine section of any competition guide.

ENTRY LIMIT

3. The State Fair management shall reserve the right to limit entries displayed and/or exhibited to facilities available and may limit the number of entries made by an exhibitor.

Entries may also be limited or not displayed based on size, content, subject material, or for any reason determined not in the best interest of the California State Fair.

Any return of entries under this rule will be done at the sole discretion of the State Fair management.

OWNERSHIP OF ENTRY

4. Unless specific provisions are otherwise made in the Competition Guide (printed or on the web), exhibitors must be the bona-fide owner of their entries.

The management may demand such proof of ownership as it deems necessary in each case.

EXHIBITOR LIABILITY

5. Each exhibitor will be solely responsible for any consequential or other loss, injury or damage done to, or occasioned by, or arising from, any animal or article exhibited by him/her.

Exhibitor agrees to indemnify, and hold harmless, the State of California, California Exposition & State Fair and all officers, agents, and employees thereof from all claims, demands, damages, costs, expenses, or liability costs suits or actions of every name, kind and description, brought forth from or on account of, injuries to death of any person including but not limited to workers, and the public, or damage to property resulting from the performance of the exhibitor or entries.

Neither party shall request apportionment of liability by a jury.

NO GUARANTEE

6. The State Fair cannot guarantee that all exhibition requirements of an entry can be provided (i.e., electricity, a showcase, a pedestal, special lighting, special location, total space requirements, water source, computer services, or any other special requirements).

DIVISION/CLASS CANCELLATION

7. The State Fair management reserves the right to return entries and cancel any division or class in which, in its judgment, the entries are insufficient to secure adequate competition.

ENTRY ERRORS

8. State Fair management is not responsible for finding errors in entries.
9. Exhibitors are responsible for any and all errors which were submitted online.
10. No exhibitor shall be entitled to an award which has been disallowed as the result of his own error.
11. The State Fair management shall withhold the payment of awards for exhibits that are ineligible and may recover awards that have been paid for ineligible entries that are disclosed during post audits of State Fair records. However, exhibitors with a cause are entitled to question the validity of any disallowance. Such exhibitors should inform the State Fair management immediately, in writing, giving their name, address, complete description of the entry and the reason for requesting reconsideration. Requests will not be considered later than ninety (90) days after receiving notice of disallowance.

SUBSTITUTION

12. Substitutions may be made in still exhibits only in the same division of the original entry of the original exhibitor, and may be made only if completed by the entry delivery date.
13. Substitutions for livestock must be in the same division of the original entry by the original exhibitor.
14. Substitutions must be made at the time of check-in to avoid penalty.
15. Fees may apply for substitutions in excess of two per division.
16. The State Fair or the judge may disqualify or transfer to the correct class any entry which is not a true representative of the division or class in which it is entered.

PREVIOUSLY ENTERED ENTRY

17. Any non-animal (still exhibit) entry that has been exhibited at a previous California State Fair is not eligible for entry in the 2024 California State Fair.

VERIFICATION

18. Online submissions will receive a confirmation once entries are submitted.

RESPONSIBILITY

19. The State Fair shall not be responsible for exhibits remaining on the fairgrounds after designated release times.
20. All Still Exhibits or display elements remaining on the fairgrounds after designated release time will be treated as abandoned property and will be disposed of on or before September 1 of the same year.

REMOVAL OF ENTRIES

21. An exhibitor may not remove his or her entry from the California State Fair once it has been accepted.
22. **Judged or Accepted:** Entries must be on exhibit at the official opening of the State Fair or at any other time specified in the Competition Guide and shall not be removed from the fairgrounds prior to the release date printed in the guide, except (at the discretion of the State Fair management) in cases of positive evidence of sickness, accident and/or death, or other circumstances that are in the best interests of the State Fair.

DISHONORED CHECKS

23. A penalty of \$25.00 per dishonored check must be paid if a check for payment of entry fees or other applicable fees is refused by the bank. Only cash, certified check or money orders are acceptable for the penalty payment.

ENTRY FEES

24. Entry Fees are NON-REFUNDABLE.

LATE ENTRIES

25. Late Entries may be accepted at the sole discretion of the California State Fair under the following conditions:
 - a. Late Entries will **NOT be accepted** for **California Crafts, Fine Art, Student Showcase, Photography, Canning & Baking, and County Fair Best of Show Master Showmanship.**
 - b. If the department accepts late entries, the completed entry form(s) and other completed required forms, signatures and full payment for all required fees must arrive at the California State Fair Entry Office

(by Certified Mail, Hand Delivery or Electronically) no later than five calendar days after the official entry deadline requirement of the competition.

For example, if the Official Entry Deadline is June 12, the last day and time a late entry may be eligible would be June 17 at 4:00 pm. If late entries arrive after 4:00 pm on that fifth day, they will NOT be considered.

- c. Open **Livestock Late Entries** will be accepted until July 5, 2024, with **an additional \$100 per entry**. Payment must be received no later than 5 pm on July 5, 2024.
- d. Extended Entry Deadline for Open Boer Goats, NDGA Nigerian Dwarf Goats and Open Pygmy Goat Shows will be July 10.
- e. All late entries must be accompanied with the entry fee as listed within the program in addition to a **late fee of \$20 per entry for all Junior Livestock and Open Livestock** entries and a **late fee of \$10 per entry for non-livestock competitions and small animals** (Fur and Feathers and dogs). Acceptable forms of payment are Visa, Master Card, check or money order.
- f. Exhibitors who are already entered as exhibitors may add additional entries as long as the animal is already entered by paying a \$100 late fee plus the original entry fee.
- g. No entries will be accepted beyond the capacity of the facility.
- h. All other entry requirements as well as any rules, regulations and schedules shall apply.
- i. No entry is a guarantee of acceptance and it is the exhibitor's responsibility to confirm that the State Fair has accepted any and all entries.
- j. The California State Fair expressly reserves the right to reject any and all entry forms for any reason whatsoever.

DESIGN

26. The California State Fair assumes total design control over the presentation of the exhibits.
27. Entries designed for hanging and not so equipped will be hung in a manner deemed appropriate by the State Fair.
28. No exhibit changes will be made once the entries have been displayed.
29. Once an entry has been received by the State Fair, no further handling of

- entry by exhibitor shall be permitted.
30. Relocation and final placement shall be accomplished by State Fair personnel.
 31. Entries requiring assembly/disassembly must include detailed instructions and sketches for assembly/disassembly.
 32. Instructions should indicate lifting points, unsecured parts and any other information required for such handling. Where necessary bank pins will be utilized to attach exhibits for display.

JUNIORS ENTERING SENIOR DEPARTMENT

33. All divisions and classes within Junior Departments are intended for Juniors exclusively. Entry into the Junior Department is regulated by age and youth organization requirements as outlined in this competition guide. In no case may a person, group or organization outside of these age requirements (younger or older) be allowed to enter and compete in the Junior department.
34. However, Juniors may elect to enter, exhibit and compete (animal or non-animal) in the Senior Department when the rules of that department, division or class allow for such. Such entries shall be restricted to:
 - a. A class for the exhibit that is not provided in the Junior Department.
 - b. Junior Livestock Exhibitors that officially enter and show in the Junior Livestock Show are eligible to compete in the Open Show as long as the same exhibit/animal is entered and shown in the Junior Show and the same exhibit/animal is entered and meets all Open Division entry deadlines and guidelines.
 - c. Open classes or divisions that allow for the participation of Juniors due to the open competition being a specialty, feature, regional or national show sanctioned by the State Fair and/or recognized organization. In this case, the Junior exhibitor must also enter and compete (with the same exhibit) in the current year's Junior department, division, class offered for the exhibit. This provision must be printed specifically within the rules of the feature show within this guide.
35. Anyone under the age of 18 who meets the California State Fair age requirements and is planning to exhibit in a Senior department must have their parent or legal guardian sign their detailed receipt.
36. If the exhibitor is required to be on the fairgrounds, the Junior must be supervised by their parent or legal guardian while at the State Fair.

37. Exhibit animals owned in partnership between Seniors and Juniors shall not affect Junior's eligibility when the Senior partner is the exhibitor.

STATE FAIR EMPLOYEE PARTICIPATION

38. No employee of the State Fair will be permitted to enter an exhibit for competition. No person shall be an exhibitor or sign an entry form as an agent in any Division or Department in which the exhibitor is a department head, judge, or paid employee.

Disqualification

ENTRY DISQUALIFICATIONS/TRANSFERS

39. A complete exhibit eligible in more than one Division and/or Class shall be entered and judged only in the Division and/or Class for which it best qualifies.
40. The State Fair or the judge may disqualify or transfer to the correct Class (at his/her discretion) any exhibit which is not a true representative of the Division or Class in which it is entered.

It is not, however, the responsibility of the State Fair or judges to transfer an entry to the correct Division and/or Class.

DISQUALIFICATIONS

41. The State Fair management shall reserve the right to vacate, declare ineligible for competition, and/or order the removal of any entry which is not in the best interest of the State Fair, is unsightly, unhealthy, injured, lame, unsound, endangers public safety, violates the State Fair's Animal Welfare Policies, or has been entered in violation of these rules and regulations.
42. In the event, an entry or an exhibitor is disqualified for any rule or policy violation (including but not limited to practices or procedures that are unethical, those in violation of the State Fair's Residue Avoidance Program, DNA Testing Program and those not adhering to the State Fair's schedule for the program), any or all of the following actions may take place:
 - a. The entry or exhibitor that is disqualified will be declared ineligible and will not receive awards, premium money and/or any sale proceeds. Further, the exhibitor shall be responsible for payment of any fees, fines due or costs incurred by the State as a result of disqualification.

- b. The owner/exhibitor and members of his/her immediate family will not be eligible to compete in subsequent California State Fair Programs. The extent and degree of future eligibility shall be determined by State Fair Management.
- c. State Fair Management reserves the right (but does not guarantee) to move entries up in placing after judging has taken place when an award void is created by a disqualification.
- This process of moving up judged entries shall only take place, however, when it is clear what the judge's placing would have been had the disqualified entry not been in competition.
 - For example, when a Champion is disqualified, the Reserve shall move up and be named the Champion; however, no other changes shall take place below the Reserve Champion. The same shall apply in the case of a class, section or division winner when a 2nd place has been clearly indicated by the judge.
 - If it is not possible to clearly determine a new placing, no change shall take place.
 - When a placing change does take place the entry moving up will receive all the awards, appropriate titles and all premiums of the disqualified entry but will not receive any of the original placing awards or premiums won in the second category. In other words, 2nd place will now receive 1st money and "no" entry will receive 2nd money.

COOPERATION

43. Exhibitors, their immediate family, leaders, advisors and agents thereof, not cooperating with security personnel or any other State Fair officials in all matters of policy, including but not limited to parking, stall/pen/ space assignments and appearance, judging and/or animal care will have their entries cancelled and will be ordered to remove their exhibit from the grounds immediately and forfeit all awards, premium monies, and sale proceeds. Failure to adhere to this rule will result in being banned from the State Fair.

PUBLIC DISTURBANCES

44. Exhibitors causing public disturbances, those who are uncooperative and/or unsportsmanlike, those not following good animal welfare practices as determined by management, or those found in violation of rules or in practices unethical or inimical with the State Fair program and/or policies/

procedures shall be penalized by forfeiture of premiums awarded, any and all awards, payments of fines and/or damages to State Property, privileges, and/or disqualification at this or subsequent State Fairs as may be deemed appropriate by the State Fair Management and/or the Board of Directors.

Further, if the exhibitor and/or exhibitor's adult supervisor, parent or family member's actions are deemed to be illegal, inhumane or unethical to livestock; the proper authorities will be notified for further investigation by those agencies for possible prosecution and/or civil penalties.

PROBATION

45. Any exhibitor found in violation of any rule may be placed on probation for one year or longer if State Fair management deems appropriate.

Judging

JUDGING

46. The judge(s) shall award first, second or third place, etc., according to merit and if without merit the judge shall make no award under any circumstances. This rule applies whether there are one or more entries in the class.

JUDGE/EXHIBITOR INFORMATION

47. No person shall act as a judge in any Division in which he/she or a member of his/her immediate family is an exhibitor, is in charge of an exhibit or division, in charge of a group of exhibitors, or is a member of a group of exhibitors.

JUDGE/FRATERNIZATION/CRITICISM

48. Judges should avoid unnecessary fraternization with exhibitors. No person shall be allowed, under any circumstances, to interfere with the judge, or judges, during their adjudications, or with the State Fair's staff, or to offer any criticism of any exhibit of another.

Violators of this rule shall be excluded immediately from the judging area and competition and be subject to such additional penalties, including cancellations of awards, as the State Fair management shall consider appropriate.

49. No exhibitor shall receive more than two cash awards in any one class. For this rule only, a husband, wife, and unmarried children (including foster children) under 18 years of age shall be considered as being one

exhibitor, except that brothers and/or sisters shall be considered as being separate exhibitors in Junior Department classes.

This rule shall have no bearing on consideration in the placing of entries by judges. Ribbons shall be presented in the order of placing by the judges.

The management shall, however, pay third money to the fourth winner, etc., when the third winner is prohibited from receiving third cash award under the provisions of this rule. (Any entry or exhibit in which one or more members of the family described above has a financial interest shall be included in the limitation of not more than two cash awards per class.)

50. Management reserves the right to combine or to divide classes in a manner it deems necessary in order to assure adequate competition.

In the event of a show change, as a result of this rule, or where classes are established after the close of entries, premiums and awards will be distributed, divided or eliminated in a manner as deemed necessary by State Fair Management.

JUDGE'S DECISION

51. The judge's decision is final.
52. The judge's decision cannot be protested.

CHIEF JUDGE POLICY

53. A Chief Judge will be assigned by the State Fair, for still exhibits only, to mediate in the event there is a conflict during the judging process. All decisions of the Chief Judge shall be final and may not be protested.

PROTESTS

54. **For still exhibits and horse only** - Any protest must be submitted in writing and given to the State Fair's staff member responsible for the Competitive Program in question within 24 hours of the time of the cause of the protest.

Protests must be based on a violation of rules, and you must reference the rule in your protest. The judge's decisions on awards cannot be protested.

No protest shall be considered by the management unless accompanied by a deposit of \$300.00 (Cash, money order or certified check).

The deposit shall be forfeited if the protest is not upheld.

Protests shall be adjudicated by State Fair management.

State Fair management will consult with a member of the California State Fair Board of Directors who shall be designated by the Chairman of the Board.

The decision of State Fair Management shall be final and unappealable. See special livestock rules for protests in the Livestock Program.

55. Under no circumstances will any entry which has been previously judged be “rejudged” due to the disqualification or removal or another entry.

Awards

SPECIAL AWARDS

56. Special Awards contributed by businesses or individuals are offered in some California State Fair Competitive Programs. These Special Awards are the obligation of the contributor/donor. The California State Fair is not responsible for redemption of these awards.

TAX LAWS

57. It is the responsibility of the exhibitor to investigate and adhere to State and Federal tax laws/regulations regarding premiums paid, and awards received.

As an out-of-state payee who earns \$1500 or more, Cal Expo must withhold 7.5% for State taxes.

You may request an exemption or a reduction of this withholding by filling out and submitting the Nonresident Withholding Waiver Request, California Form 588.

PREMIUM AWARDS

58. Awards, ribbons, tags or cards have no value as payment. Premiums are paid only from the records of the judges' sheets.
59. Premium checks will be issued as soon as auditing, drug testing, if applicable, and processing can be completed. If checks are not received by November 15, please phone or write the State Fair.
60. Checks must be **cashed within six months** of the date of issue.
61. Exhibitors have until December 31 of the same year, to claim checks returned to the State Fair. Checks will not be reissued after this date.

Age Requirements

JUNIOR EXHIBITORS MEMBERSHIP AGE AND AFFILIATION REQUIREMENTS

62. Organization affiliation requirements: If a Junior (youth) exhibitor has been a member of a junior organization for 60 days immediately prior to the opening date of the State Fair (May 13, 2024), and their project or entry was produced or conducted at any time during the year of 2024 under the supervision of the organization, the Junior must enter the divisions or classes designated for that organization.

If, however, the project or entry was not produced or conducted under the supervision of the organization, the Junior must enter as an Independent Junior for that project or entry.

Example: If a 4-H member wishes to enter a Market Lamb competition and the Youth Canning & Baking competition, in a situation where they are only enrolled in a 4-H Sheep project, the entry is as follows: Enter 4-H for the Market Lamb competition and Independent Junior for the Canning & Baking competition (even though the exhibitor is a 4-H member, the baked goods project was not produced or conducted under the supervision of the organization).

63. Non-designated “Junior” shows or divisions: If a show or division offered is not specified as 4-H or FFA, Junior exhibitors who are enrolled in a 4-H or FFA project relating to that show or division must still enter as members of their respective organizations and follow all applicable rules and regulations of the department.
64. All 4-H exhibitors must be 9 years old by December 31, 2023, and not be older than 19 years old as of December 31, 2023. Exhibitors must also meet age and membership requirements of their organizations when entering as a member of an organization. Exhibitors must also meet the ownership and all other requirements of the competition to be eligible for entry.
65. California Grange: California Grange youth shall be considered Independent Juniors for Livestock, Dairy, Small Animal and Still Exhibits.

INDEPENDENT JUNIOR AND GRANGE AGE REQUIREMENTS

(Rules 66-69 apply to Indoor non-animal Exhibits only.)

66. Independent Junior and Grange exhibitors may enter California State Fair classes and divisions in indoor (Still Exhibit) competitions if they are 5 years old as of January 1, 2024.

67. Independent exhibitors are eligible to compete/exhibit through December 31 of the year in which they turn 18 years of age.
68. Grange exhibitors are eligible to compete/exhibit through December 31 of the year in which they turn 19 years of age. Exhibitors must meet the ownership and all other requirements of the competition to be eligible for entry.
69. Independent Still Exhibit Exhibitors: Persons, who are “not” 4-H, FFA or Grange members may enter the Junior competitions provided they meet age requirements for youth exhibitors in the competition they are entering. These Juniors are considered Independent Juniors and must enter Independent Junior classes or divisions when the classes or divisions are designated as such in the Indoor (Still Exhibits) Competitions. Exhibitors who enter Independent of an organization must not be older than 18 years old as of January 1, 2024.

FFA AGE REQUIREMENTS

70. The first year of eligibility will be determined by the FFA advisor; however, the exhibitor must have graduated from the 8th grade as of July 1, 2024. FFA requirements allow exhibitors to enter FFA classes through the year following the year in which they graduate from high school.

INDEPENDENT AND GRANGE ANIMAL EXHIBITORS

71. Persons who are “not” 4-H or FFA members may enter the Junior Livestock Show provided they meet age requirements for animal exhibitors at the State Fair. These Independent and Grange exhibitors shall enter 4-H or FFA classes as follows:
 - a. Independent and Grange Junior exhibitors who are 13 years of age or under (as of show day) shall compete in the appropriate 4-H divisions only.
 - b. Independent and Grange Junior exhibitors who are 14 years of age (as of show day) or are incoming freshmen in high school shall be placed by State Fair Management in either 4-H or FFA divisions.
 - c. Independent Junior exhibitors are eligible to enter 4-H or FFA Showmanship. Independent Juniors are not eligible for County or Chapter Groups or Outstanding Exhibitor.

MEMBER STANDING AND OWNERSHIP REQUIREMENTS

72. Juniors who are members of 4-H, FFA or Grange must be in good standing with their organization and projects entered as such must have been conducted under the supervision of the organization and must be owned by the exhibitor (unless otherwise stated).

ELIGIBILITY QUESTIONS

73. Any questions as to the eligibility of an entry shall be determined by the exhibitor's advisor (for 4-H, FFA or Grange), instructor (for Student Showcase) or parent or guardian (for Independent Juniors). Notwithstanding the foregoing, the State Fair shall make the final determination of eligibility in all cases.

4-H AGE REQUIREMENTS

74. The levels of membership for 4-H are aged based. Each level is defined as follows:
- Primary Level:** Must be 5 years old as of December 31, 2023. Primary membership ends when members qualify as junior members. Exhibitors who are under nine years of age on or before December 31, 2023, are not eligible to compete in animal competitions at the California State Fair.
 - Junior, Intermediate & Senior:** Must be 9 years old by December 31, 2023. Exhibitors are eligible to compete/exhibit through December 31 of the year in which they turn 19 years of age.
 - Home Schooled Children:** Age criteria, as listed in 1 and 2, only will apply to home-schooled children. A grade level will not be a consideration. (Exhibitors who are under 9 years of age as of December 31, 2023, are not eligible to compete in animal competitions at the California State Fair.)

INDEPENDENT JUNIOR AND GRANGE AGE REQUIREMENTS

(This rule applies to Animal Exhibitors)

75. Independent Junior and Grange animal exhibitors must be 9 years old as of January 1, 2024, and are eligible to compete through December 31 of the year in which they turn 19 years of age. Independent Juniors and Grange exhibitors shall enter 4-H or FFA animal classes.

NO DUAL AFFILIATION IN COMPETITION

76. Under no circumstances may an exhibitor show the same species or project in more than one Division of the Junior Department.

ADULT SUPERVISION REQUIREMENT

77. All Junior exhibitors, required to be on the State Fairgrounds, must be accompanied and supervised by an adult while on the State Fairgrounds. Instructors, advisors, leaders and other adults in charge of Junior exhibitors shall be responsible for their conduct at all times.

FFA SUPERVISION REQUIREMENTS

78. All FFA exhibitors entered as such must be supervised by their agricultural instructor.

Any deviation from this rule must be taken up with the State Agriculture Education unit representative in charge.

The CATA Curricular Activities Code shall govern the conduct and eligibility of FFA exhibitors and their projects.

UNIFORMS

79. Uniform requirements for Independent youth shall be the same as required for 4-H and FFA members excluding insignia.

The official show uniform for animal exhibitors at the California State Fair will be white pants, trousers or dress and a white blouse or shirt.

80. No exhibit owned by a chapter or club, or conducted, as a joint project by two or more individuals is eligible in the Junior Department unless the division/class specifically states.

FREE SPEECH ACTIVITIES GUIDELINE

81. The California Exposition & State Fair (Cal Expo) hereby finds that these guidelines are intended to set forth in writing Cal Expo's long-standing policy governing the conduct of Cal Expo employees and exhibitors, as well as members of the public, under the First Amendment to the United States Constitution and Article I of the California Constitution, on Cal Expo's grounds.

These guidelines are not intended to enlarge upon nor create any rights guaranteed by existing law nor waive any defense or rights available to Cal Expo, nor do they represent any admission that the facilities of Cal Expo are open as a public forum.

It is the policy of Cal Expo to allow within the parameters set forth herein, reasonable access to its grounds and designated free speech expression zones for demonstrations for free speech activity as allowed by the First Amendment to the United States Constitution and Article I to the California Constitution.

For further information regarding Free Speech Activities at the California Exposition & State Fair please write to:

Chief of Police, California Exposition & State Fair

P.O. Box 15649, Sacramento, CA 95852

82. Should contractors, associations, clubs or individuals desire to arrange for beverages and food service, all such arrangements must be coordinated through Oak View Group Hospitality, the State's Master Food & Beverage Contractor. **No exceptions.**

Contractor shall be responsible for expenses related to these services if any. Alcoholic beverage service areas/facilities will only be allowed in designated locations. Only persons 21 years or older will be allowed to consume alcoholic beverages. Further, no alcoholic beverages may be brought onto the grounds. These products may only be acquired at OVG permitted locations on the grounds. Individuals that endanger themselves or others will be reported to authorities.

DEFINITIONS

The following definitions apply to this guide

American System of Judging: Each entry in a class is judged in comparison to the other entries in the class. Entries are placed first, second, third, etc. according to relative merit. There will be no more than one first, second, third, etc. per class.

Danish System of Judging: Each entry in a class is judged on its own merit. Entries are placed first, second, third, etc., depending on points received based on the score card. There may be more than one first, second, third, etc. per class.

Senior Departments: California Fine Art, California Crafts, Canning & Baking, Photography, Commercial Wine, Commercial Craft Brew, Home Brew, California Cheese, California Olive Oil, Open Livestock by species and Open Small Animals by species.

Junior Departments: Youth Canning & Baking, Student Showcase, Ag Mechanics, Junior Livestock by species and Junior Small Animals by species.

Senior/Open Exhibitor: An exhibitor who is no longer eligible to be a Junior Exhibitor or enter a Junior Department.

Junior Exhibitor: An exhibitor who is a member of 4-H, FFA, Grange, or an Independent Youth Exhibitor who meets the requirements of Independent Junior divisions offered. See the specific show and General Rules for exceptions to this definition.

Entry Office: The California State Fair Entry Office is located at 1600 Exposition Blvd., Sacramento. Contact may be made by phone, mail, email or personal contact. Questions regarding competitions may also be directed to the Entry Office. (916) 263-3149 - entryoffice@calexpo.com.

Still Exhibits: All competitive exhibits which are typically indoor and not involving animals, such as art, quilts, foods, crafts, sewing, metalwork, jewelry, graphics, drafting, sciences, etc.

Livestock & Small Animals: All competitive exhibits which animals are the entry; such as beef, sheep, swine, dairy cattle, goats, llamas, cavies, rabbits, poultry, dogs, etc.

Online Entry: Commitment to enter and abide by rules.

Detailed Receipt: An official form used in submitting an entry/exhibit in the

California State Fair. The Detailed Receipt is only required for Open and Junior Livestock, Small Animals, Best of Show and Ag Mechanic exhibitors.

Entry Fees: A fee charged to enter a competition. All entry fees must be paid online when entries are submitted.

Entry/Exhibit: Terms used to define the item entered in the competition or contest.

Entrant/Exhibitor: Terms used to define the person entering the competition.

Premium: A cash award is given to winners of the competition.

Department: Competition you wish to enter, i.e., California Crafts, Fine Art, Student Showcase, etc. which is comprised of similar shows.

Shows: Generalized sections of the competition.

Division: Categories within a show.

Class: Specific categories within a division.

Competition Guide: a printed or electronic (web) book, prospectus, or flyer which contains information for entry into the California State Fair competitions. Competition Guides can be a printed document or as an electronic document found on the California Exposition & State Fair website CalExpoStateFair.com.

Bona-fide Ownership of Exhibit - ownership is the state or fact of exclusive rights and control over property considered an entry or exhibit. This definition includes livestock, small animals, and horses although not limited to that type of property. Objects/products created or produced are also included as well as intellectual property. Proof of such ownership may be required by management.